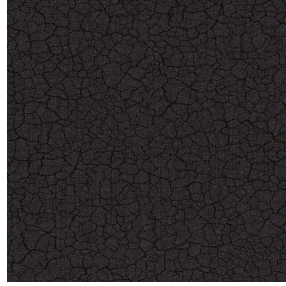




BOREAL BPI 00
Druck-Trägergewebe



TERRA Ebene 113
Druck design



Druck-Trägergewebe **BOREAL BPI 00** Druck design **TERRA Ebene 113**

Abdunkelungsträger für Digitaldruck

Technische Eigenschaften



Feuerfestigkeit



Wärmeschutz



Akustik

Applications Innenfutter - Bettläufer - Vorhänge - Falgardinen - Valence-Vorhänge

Zusammensetzung 100% feuerfester Polyester

Gewicht 260 g/m²

Breite 145 cm

Stoffrichtung Standardrichtung

Eignung ↔ 0.0 cm ↓ 0.0 cm

Pflegehinweis

Beschriftung OEKO-TEX STANDARD 100

Mindestbestellmenge 25



Das Display berücksichtigt nicht das Druck-Trägermaterial. Die endgültige Wiedergabe kann je nach gewähltem Trägermaterial unterschiedlich sein.

Technische Eigenschaften

Feuerfestigkeit	M1 / B1 / IMO PASS / UNI 8456 / 9174 Classe Uno	
Akustik	Schalldämpfungskoeffizient (NRC) : 0.88	
Beständigkeit	Formstabilität (%)	
	Verzerrung	0
	Querfäden	0
	Bruchdehnung	
	Verzerrung	17
	Querfäden	27
Bruchlast (daN)	Verzerrung	87
	Querfäden	110

Druck design TERRA



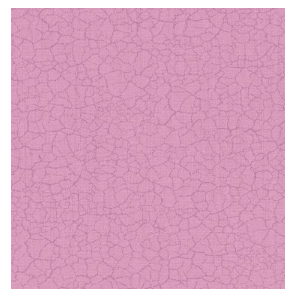
TERRA Ficelle 09



TERRA Taupe 95



TERRA Ecume 82



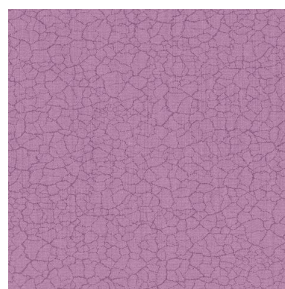
TERRA Rose 129



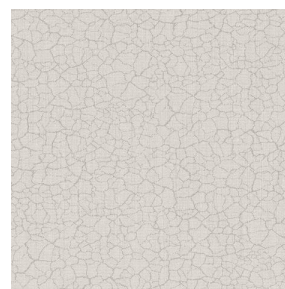
TERRA Fusain 71



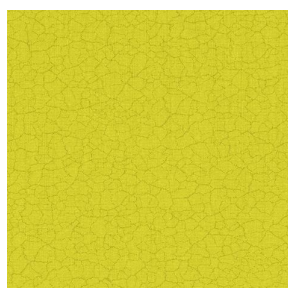
TERRA Brun 23



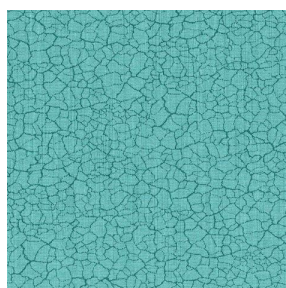
TERRA Hortensia 134



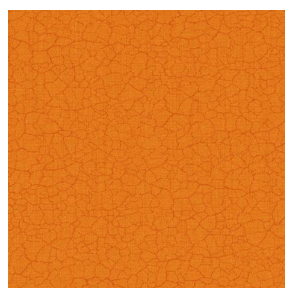
TERRA Naturel 26



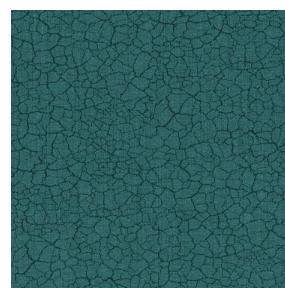
TERRA Anis 62



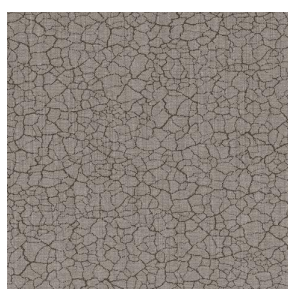
TERRA Lagon 110



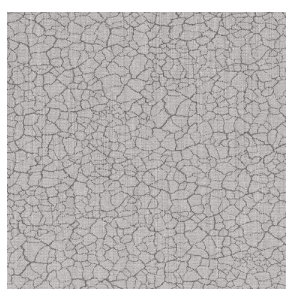
TERRA Citrouille 136



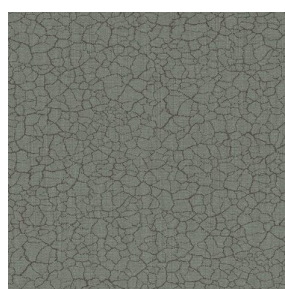
TERRA Pacifique 54



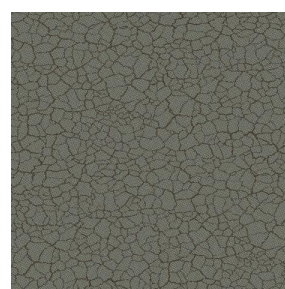
TERRA Chamois 111



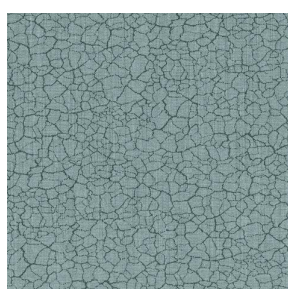
TERRA Titanium 98



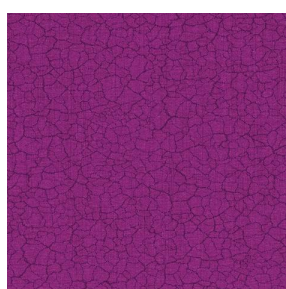
TERRA Graphite 77



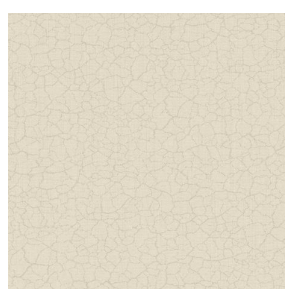
TERRA Gris 97



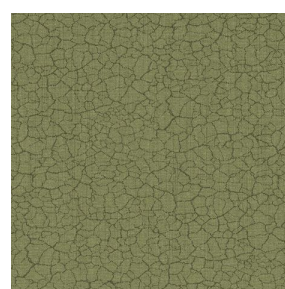
TERRA Ardoise 87



TERRA Violine 105



TERRA Chanvre 72



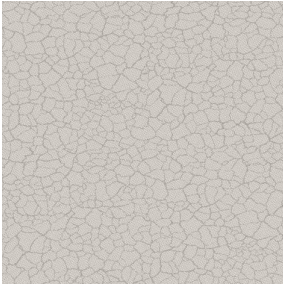
TERRA Argile 85

drapilux
By Sotexpro

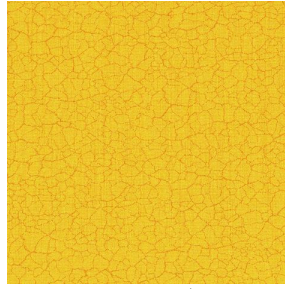
DRAPILUX GmbH - Hofenstraße 3, 77694 Kehl - Deutschland

Non-contractual photos and colors - Indicative fitting - Fitting may vary depending on support selected

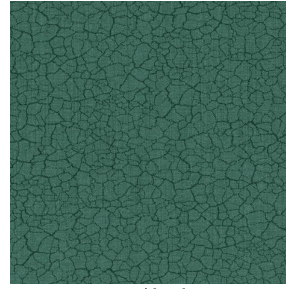
Druck design TERRA



TERRA Lin 11



TERRA Genêt 06



TERRA Céladon 135



TERRA Ocre 03