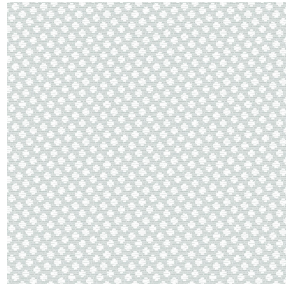




BOREAL BPI 00
Druck-Trägergewebe



GONIDIE Glacier 43
Druck design



Druck-Trägergewebe **BOREAL BPI 00** Druck design **GONIDIE Glacier 43**

Abdunkelungsträger für Digitaldruck

Technische Eigenschaften



Feuerfestigkeit



Wärmeschutz



Akustik

Applications Faltgardinen - Valence-Vorhänge - Innenfutter - Bettläufer - Vorhänge

Zusammensetzung 100% feuerfester Polyester

Gewicht 260 g/m²

Breite 145 cm

Stoffrichtung Standardrichtung

Eignung ↔ 0.0 cm ↓ 0.0 cm

Pflegehinweis     

Beschriftung OEKO-TEX STANDARD 100

Mindestbestellmenge 25



Das Display berücksichtigt nicht das Druck-Trägermaterial. Die endgültige Wiedergabe kann je nach gewähltem Trägermaterial unterschiedlich sein.

Technische Eigenschaften

Feuerfestigkeit	M1 / B1 / IMO PASS / UNI 8456 / 9174 Classe Uno	
Akustik	Schalldämpfungskoeffizient (NRC) : 0.88	
Beständigkeit	Formstabilität (%)	
	Verzerrung	0
	Querfäden	0
	Bruchdehnung	
	Verzerrung	17
	Querfäden	27
Bruchlast (daN)	Verzerrung	87
	Querfäden	110

Druck design GONIDIE



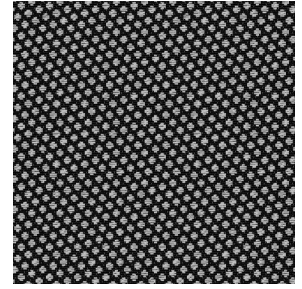
GONIDIE Souris 31



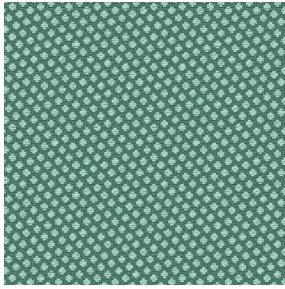
GONIDIE Beige 63



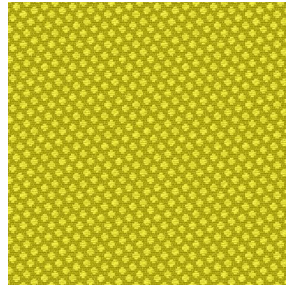
GONIDIE Citrouille 136



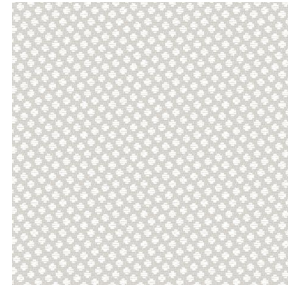
GONIDIE Noir 10



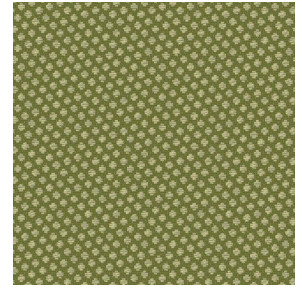
GONIDIE Céladon 135



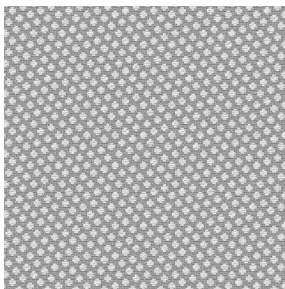
GONIDIE Anis 62



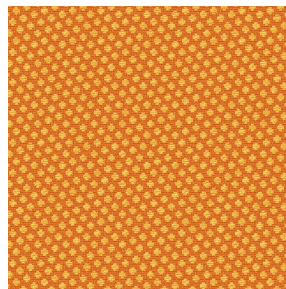
GONIDIE Perle 96



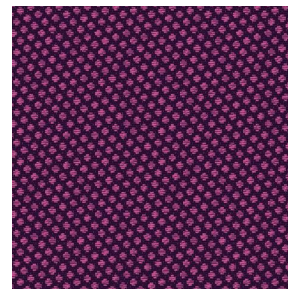
GONIDIE Mousse 92



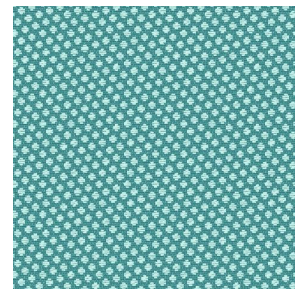
GONIDIE Tourterelle
138



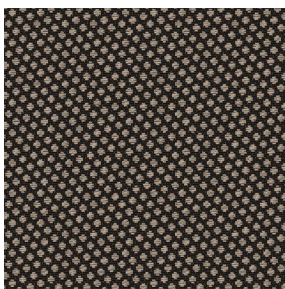
GONIDIE Brique 42



GONIDIE Opéra 104



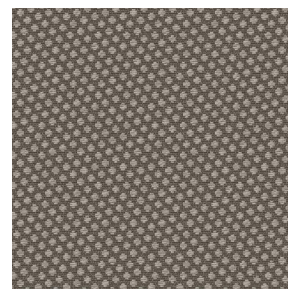
GONIDIE Pacifique 54



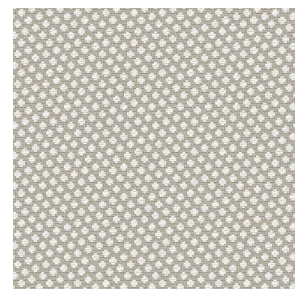
GONIDIE Brun 23



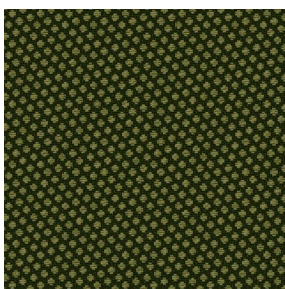
GONIDIE Crème 32



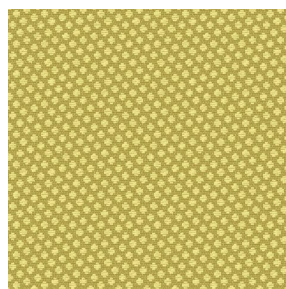
GONIDIE Taupe 95



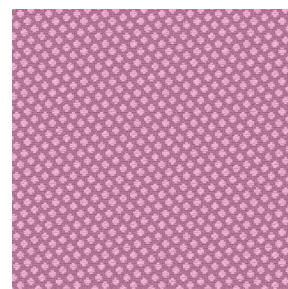
GONIDIE Lin 11



GONIDIE Lierre 124



GONIDIE Bergamote
121



GONIDIE Hortensia 134



GONIDIE Vieux rose 64

drapilux
By Sotexpro

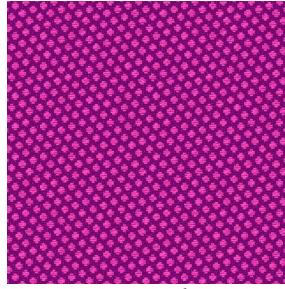
DRAPILUX GmbH - Hofenstraße 3, 77694 Kehl - Deutschland

Non-contractual photos and colors - Indicative fitting - Fitting may vary depending on support selected

Druck design GONIDIE



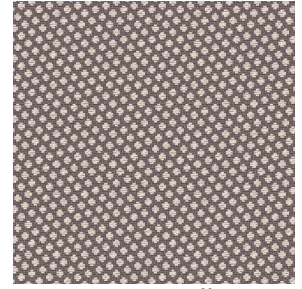
GONIDIE Emeraude 88



GONIDIE Fuchsia 33



GONIDIE Ebene 113



GONIDIE Ficelle 09