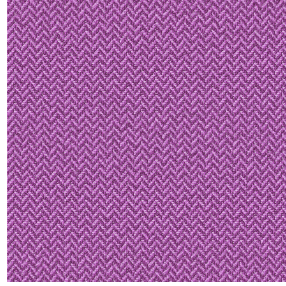




BELORA BPI 00
Druck-Trägergewebe



SCOURTIN Violine 105
Druck design



Druck-Trägergewebe **BELORA BPI 00** Druck design **SCOURTIN Violine 105**

Abdunkelungsträger für Digitaldruck. Er hat keine M1 Brandschutzklassifizierung.

Technische Eigenschaften



Feuerfestigkeit



Wärmeschutz



Akustik

Applications Faltgardinen - Flächenvorhänge - Innenfutter - Vorhänge

Zusammensetzung 100% Polyester

Gewicht 260 g/m²

Breite 280 cm

Stoffrichtung Rückwärtsrichtung

Eignung ↔ cm ↓ cm

Pflegehinweis

Beschriftung OEKO-TEX STANDARD 100

Mindestbestellmenge 25



Das Display berücksichtigt nicht das Druck-Trägermaterial. Die endgültige Wiedergabe kann je nach gewähltem Trägermaterial unterschiedlich sein.

Technische Eigenschaften

Feuerfestigkeit	NF 12952	
Akustik	Schalldämpfungskoeffizient (NRC) :	0.88
Beständigkeit	Formstabilität (%)	
	Verzerrung	0
	Querfäden	0
	Bruchdehnung	
	Verzerrung	17
	Querfäden	27
	Bruchlast (daN)	
	Verzerrung	87
Querfäden	110	

Druck design SCOURTIN



SCOURTIN Beige 63



SCOURTIN Fuchsia 33



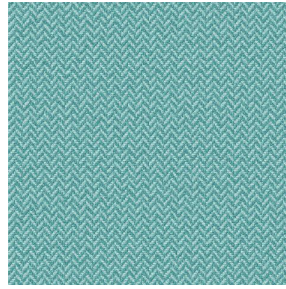
SCOURTIN Sapin 126



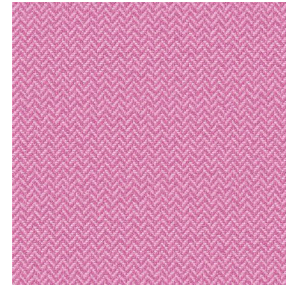
SCOURTIN Bergamote
121



SCOURTIN Anthracite
38



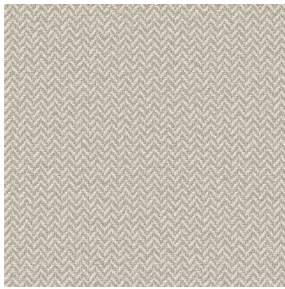
SCOURTIN Pacifique 54



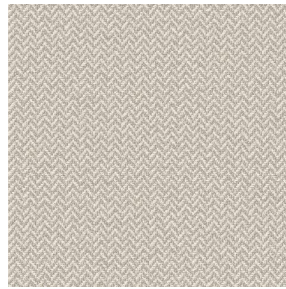
SCOURTIN Rose 129



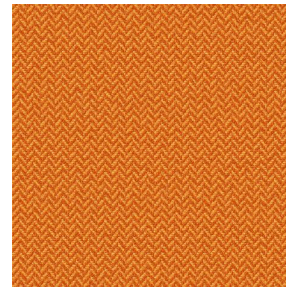
SCOURTIN Blanc 01



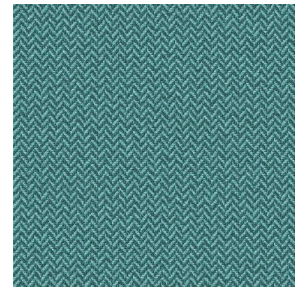
SCOURTIN Lin 11



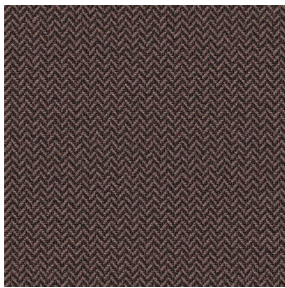
SCOURTIN Naturel 26



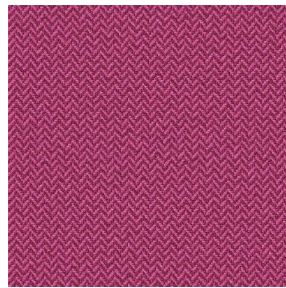
SCOURTIN Citrouille
136



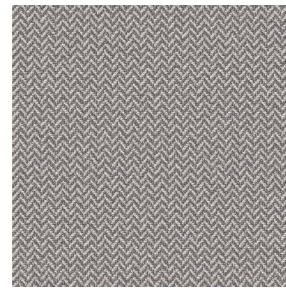
SCOURTIN Turquoise 53



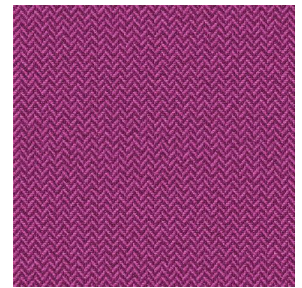
SCOURTIN Brun 23



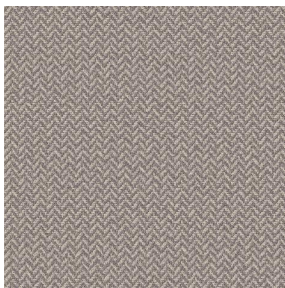
SCOURTIN Hortensia
134



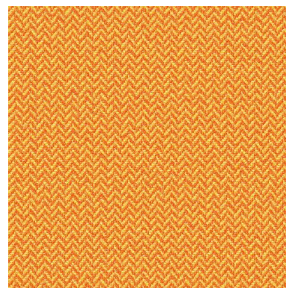
SCOURTIN Orage 123



SCOURTIN Rubis 59



SCOURTIN Ficelle 09



SCOURTIN Maïs 37



SCOURTIN Céladon 135



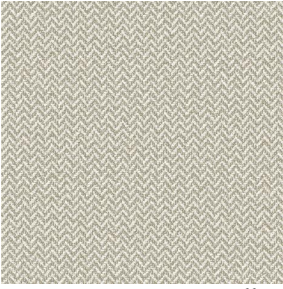
SCOURTIN Ebene 113

drapilux
By Sotexpro

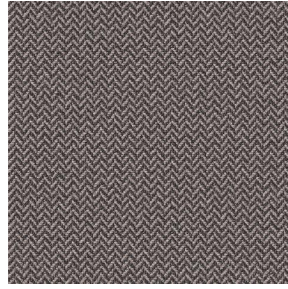
DRAPILUX GmbH - Hofenstraße 3, 77694 Kehl - Deutschland

Non-contractual photos and colors - Indicative fitting - Fitting may vary depending on support selected

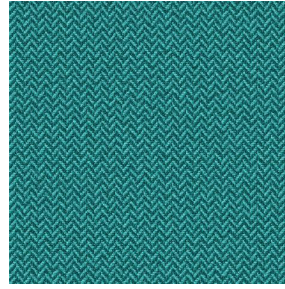
Druck design SCOURTIN



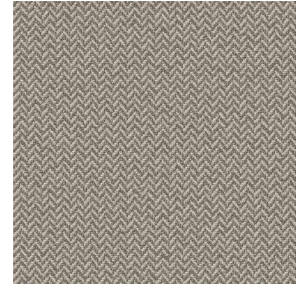
SCOURTIN Tourterelle
138



SCOURTIN Titanium 98



SCOURTIN Lagon 110



SCOURTIN Gris 97