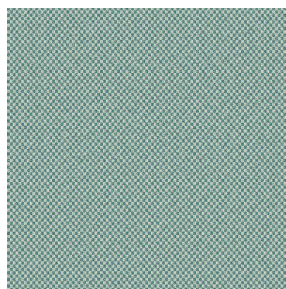
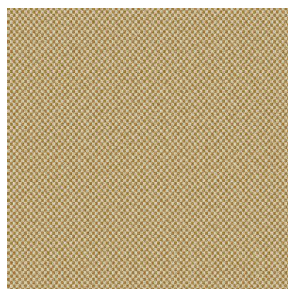


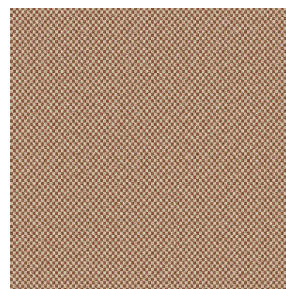
SIENTO COLOR



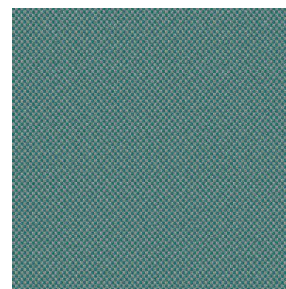
SIENTO COLOR Lagon
110



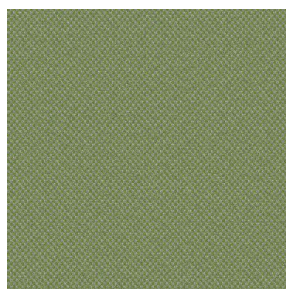
SIENTO COLOR Or 94



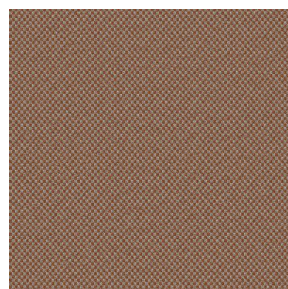
SIENTO COLOR
Châtaigne 55



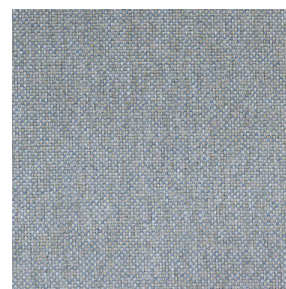
SIENTO COLOR Céladon
135



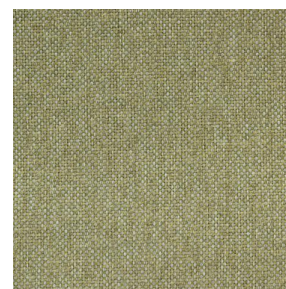
SIENTO COLOR Mousse
92



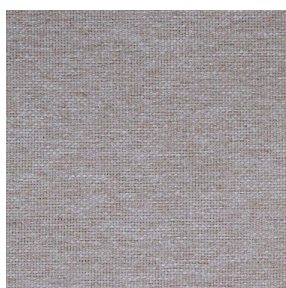
SIENTO COLOR Terre
107



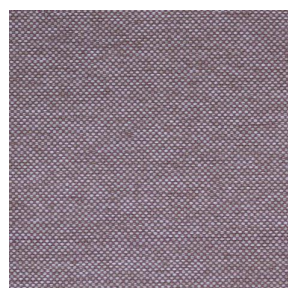
SIENTO COLOR Faïence
149



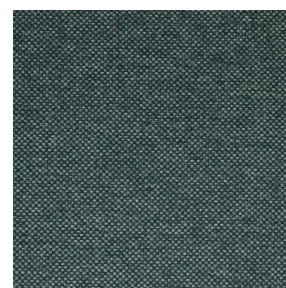
SIENTO COLOR Tilleul
103



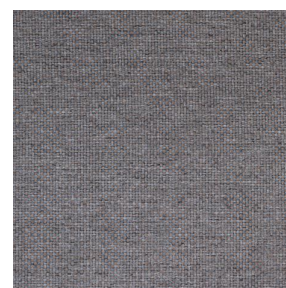
SIENTO COLOR Lilas 19



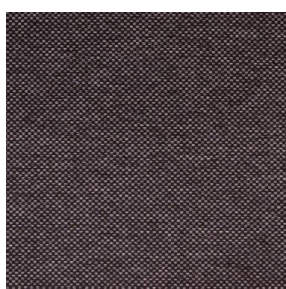
SIENTO COLOR
Hortensia 134



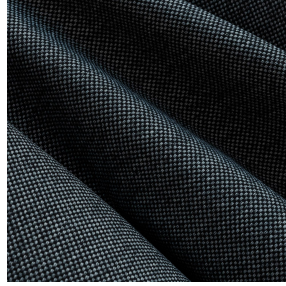
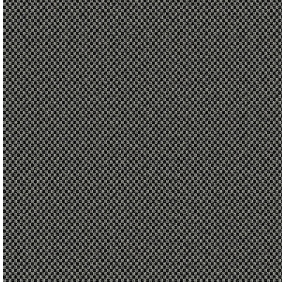
SIENTO COLOR Sapin
126



SIENTO COLOR Bronze
13



SIENTO COLOR Prune
84



SIENTO COLOR Titanium 98

Natté lourd effet laine, le siento color est tissé avec des fils teints mélangés dont une trame colorée, ce qui lui confère cet aspect rustique et chiné.

Technische Eigenschaften



Feuerfestigkeit



Recycled fabrics

Applications Faltgardinen - Flächenvorhänge - Bettwäsche - Bestuhlung - Bettläufer - Vorhänge - Kissen - Dekorative Rahmen

Zusammensetzung 34 % polyester FR hergestellt mit recycleden Garnen / 66 % polyester FR

Gewicht 370 g/m² **Breite** 290 cm

Stoffrichtung Rückwärts- oder Standardrichtung **Eignung** ↔ cm ↓ cm

Pflegehinweis     

Beschriftungen France Terre Textile (R016)

Certifications OEKO-TEX STANDARD 100 Recyclé (CQ 1006/2)

Mindestbestellmenge 1

Technische Eigenschaften

Feuerfestigkeit	M1 / B1 / IMO PASS
Akustik	Schalldämpfungskoeffizient (NRC) : 0.71 Gewichteter Schallabsorptionskoeffizient (a _w) : 0.60 Akustische Absorptionsklasse (a _w) : C
Thermaler Index	Sonnenreflexion : -1 %
Beständigkeit	Lichtechtheit (Einheiten Klasse/8) 6 Pilling 4 Formstabilität (%) Verzerrung -2 Querfäden -1 Martindale (Zyklen) 90000 Bruchdehnung Verzerrung 49 Querfäden 44 Bruchlast (daN) Verzerrung 160 Querfäden 210

drapilux
By Sotexpro

DRAPILUX GmbH - Hofenstraße 3, 77694 Kehl - Deutschland

Non-contractual photos and colors - Indicative fitting - Fitting may vary depending on supports selected