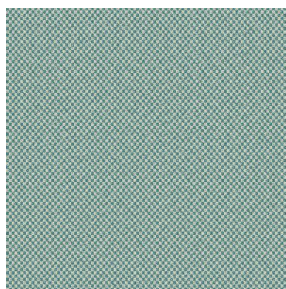
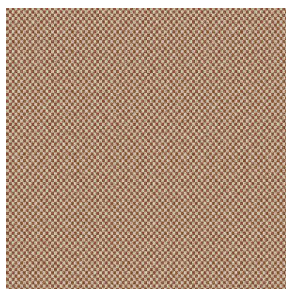


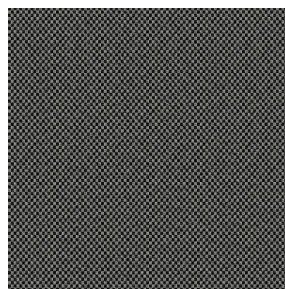
SIENTO COLOR



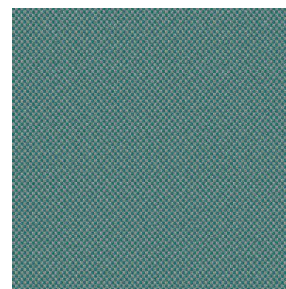
SIENTO COLOR Lagon
110



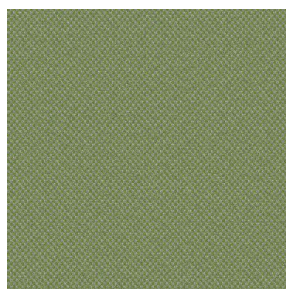
SIENTO COLOR
Châtaigne 55



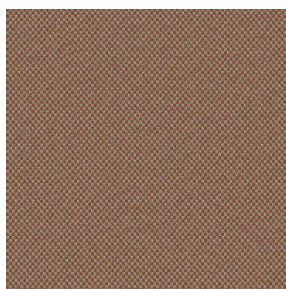
SIENTO COLOR
Titanium 98



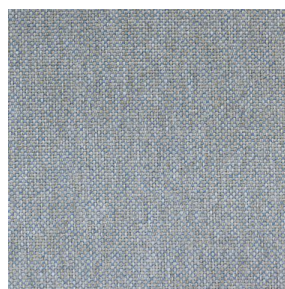
SIENTO COLOR Céladon
135



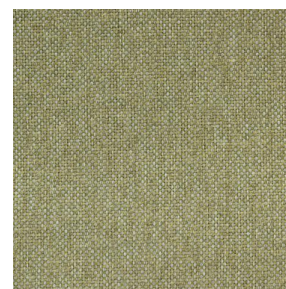
SIENTO COLOR Mousse
92



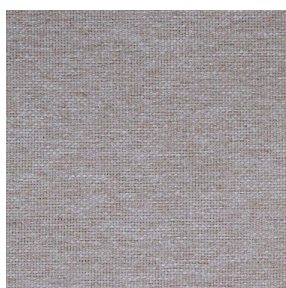
SIENTO COLOR Terre
107



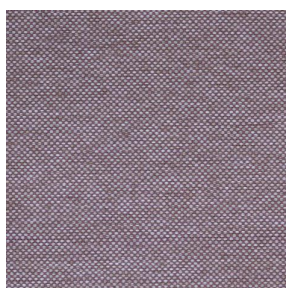
SIENTO COLOR Faïence
149



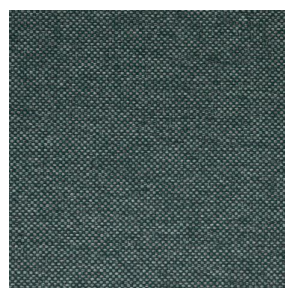
SIENTO COLOR Tilleul
103



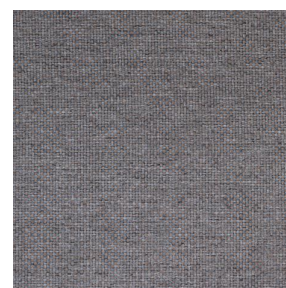
SIENTO COLOR Lilas 19



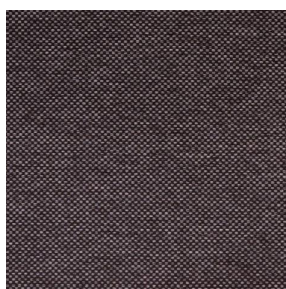
SIENTO COLOR
Hortensia 134



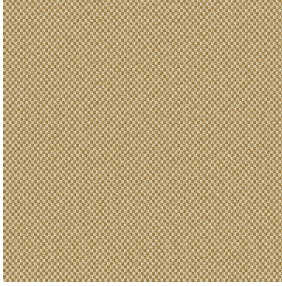
SIENTO COLOR Sapin
126



SIENTO COLOR Bronze
13



SIENTO COLOR Prune
84



SIENTO COLOR Or 94

Naté lourd effet laine, le siento color est tissé avec des fils teints mélangés dont une trame colorée, ce qui lui confère cet aspect rustique et chiné.

Technische Eigenschaften



Feuerfestigkeit



Recycled fabrics

Applications Faltdampfen - Flächenvorhänge - Bettwäsche - Bestuhlung - Bettläufer - Vorhänge - Kissen - Dekorative Rahmen

Zusammensetzung 34 % polyester FR hergestellt mit recycelten Garnen / 66 % polyester FR

Gewicht 370 g/m² **Breite** 290 cm

Stoffrichtung Rückwärts- oder Standardrichtung **Eignung** ↔ cm ↑ cm

Pflegehinweis     

Beschriftungen France Terre Textile (R016)

Certifications OEKO-TEX STANDARD 100 Recyclé (CQ 1006/2)

Mindestbestellmenge 1

Technische Eigenschaften

Feuerfestigkeit

M1 / B1 / IMO PASS

Akustik

Schalldämpfungskoeffizient (NRC) : **0.71**

Gewichteter Schallabsorptionskoeffizient (a_w) : **0.60**

Akustische Absorptionsklasse (a_w) : **C**

Beständigkeit

Lichtechtheit (Einheiten Klasse/8) **6**

Pilling **4**

Formstabilität (%)

Verzerrung **-2**

Querfäden **-1**

Martindale (Zyklen) **90000**

Bruchdehnung

Verzerrung **49**

Querfäden **44**

Bruchlast (daN)

Verzerrung **160**

Querfäden **210**

drapilux
By Sotexpro

DRAPILUX GmbH - Hafenstraße 3, 77694 Kehl - Deutschland

Non-contractual photos and colors - Indicative fitting - Fitting may vary depending on support selected