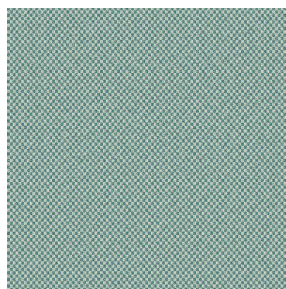
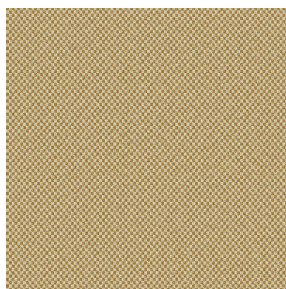


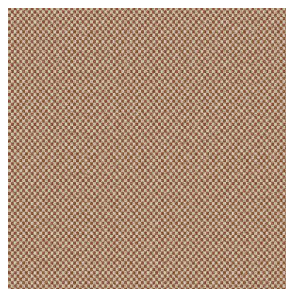
# SIENTO COLOR



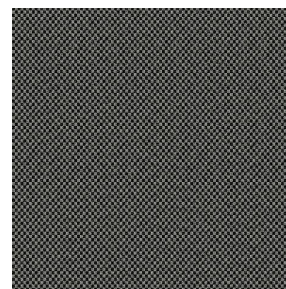
SIENTO COLOR Lagon  
110



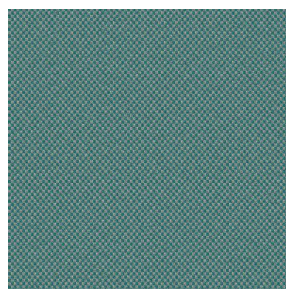
SIENTO COLOR Or 94



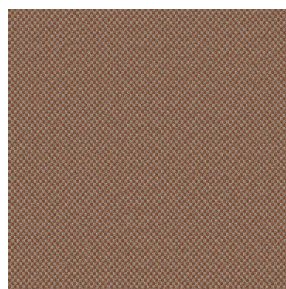
SIENTO COLOR  
Châtaigne 55



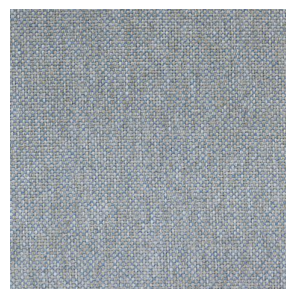
SIENTO COLOR  
Titanium 98



SIENTO COLOR Céladon  
135



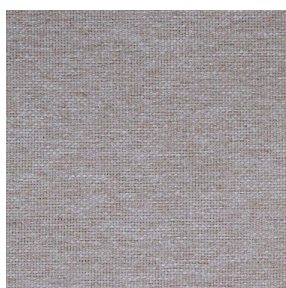
SIENTO COLOR Terre  
107



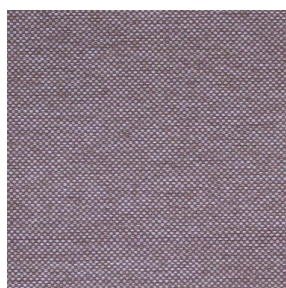
SIENTO COLOR Faïence  
149



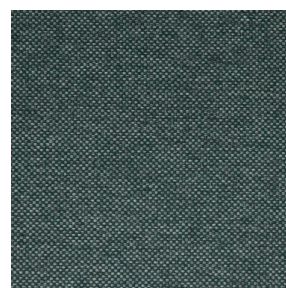
SIENTO COLOR Tilleul  
103



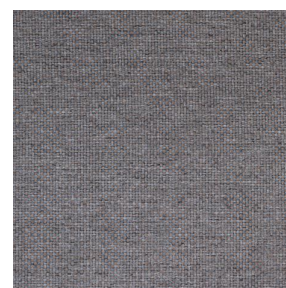
SIENTO COLOR Lilas 19



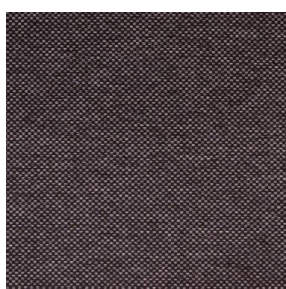
SIENTO COLOR  
Hortensia 134



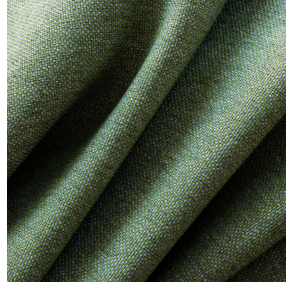
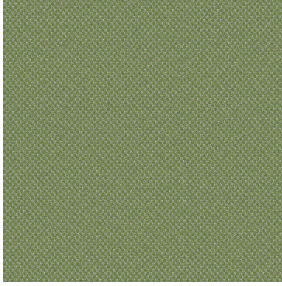
SIENTO COLOR Sapin  
126



SIENTO COLOR Bronze  
13



SIENTO COLOR Prune  
84



# SIENTO COLOR Mousse 92

Naté lourd effet laine, le siento color est tissé avec des fils teints mélangés dont une trame colorée, ce qui lui confère cet aspect rustique et chiné.

## Technische Eigenschaften



Feuerfestigkeit



Recycled fabrics

**Applications** Kissen - Dekorative Rahmen - Falgardinen - Flächenvorhänge -  
Betwäsche - Bestuhlung - Bettläufer - Vorhänge

**Zusammensetzung** 34 % polyester FR hergestellt mit recycleden Garnen / 66 %  
polyester FR

**Gewicht** 370 g/m<sup>2</sup> **Breite** 290 cm

**Stoffrichtung** Rückwärts- oder Standardrichtung **Eignung** ↔ cm ↑ cm

**Pflegehinweis**     

**Beschriftungen** France Terre Textile (R016)

**Certifications** OEKO-TEX STANDARD 100 Recyclé (CQ 1006/2)

**Mindestbestellmenge** 1

## Technische Eigenschaften

Feuerfestigkeit

M1 / B1 / IMO PASS

Akustik

Schalldämpfungskoeffizient (NRC) : **0.71**

Gewichteter Schallabsorptionskoeffizient (a<sub>w</sub>) : **0.60**

Akustische Absorptionsklasse (a<sub>w</sub>) : **C**

Beständigkeit

Lichtechtheit (Einheiten Klasse/8) **6**

Pilling **4**

Formstabilität (%)

Verzerrung **-2**

Querfäden **-1**

Martindale (Zyklen) **90000**

Bruchdehnung

Verzerrung **49**

Querfäden **44**

Bruchlast (daN)

Verzerrung **160**

Querfäden **210**

**drapilux**  
By Sotexpro

DRAPILUX GmbH - Hafenstraße 3, 77694 Kehl - Deutschland

Non-contractual photos and colors - Indicative fitting - Fitting may vary depending on support selected