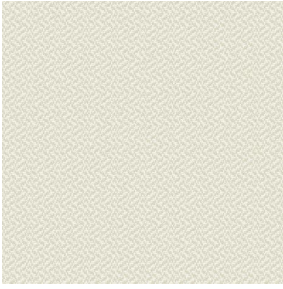
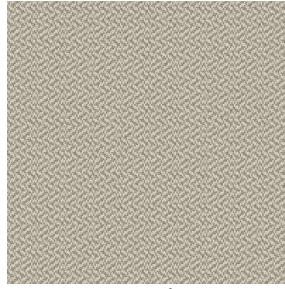


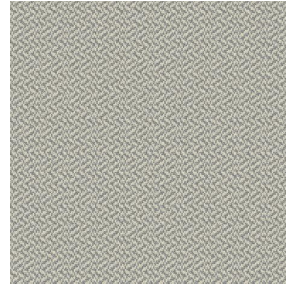
# SETO MILO



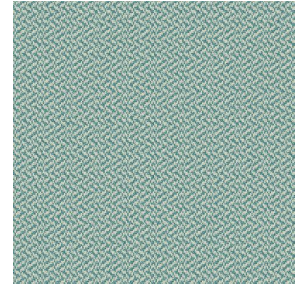
SETO MILO Coco 142



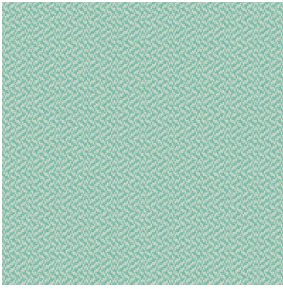
SETO MILO Chanvre 72



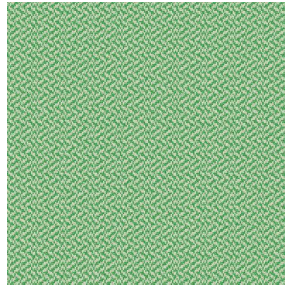
SETO MILO Jute 141



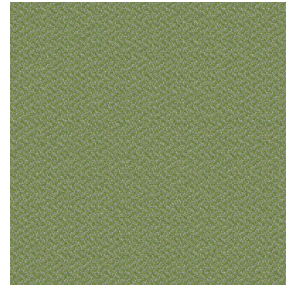
SETO MILO Lagon 110



SETO MILO Jade 116



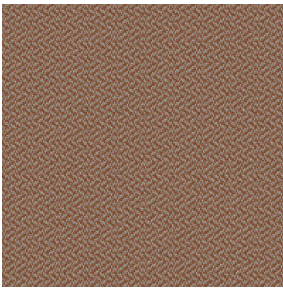
SETO MILO Prairie 125



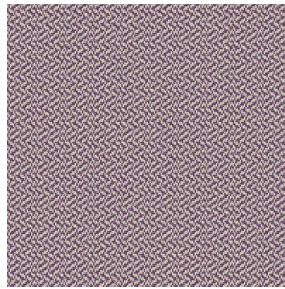
SETO MILO Mousse 92



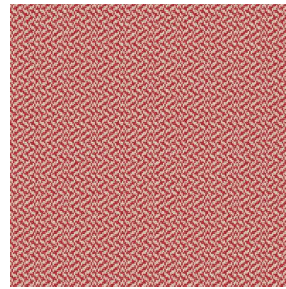
SETO MILO Mastic 48



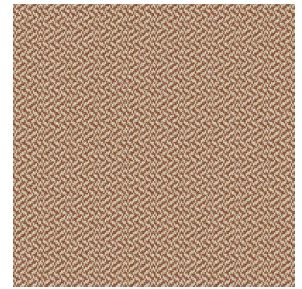
SETO MILO Terre 107



SETO MILO Saphir 106



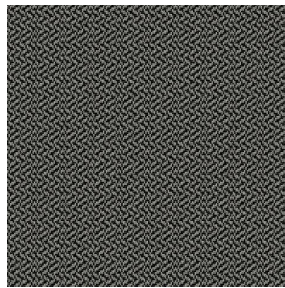
SETO MILO Rouge 21



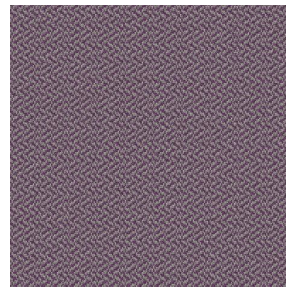
SETO MILO Châtaigne  
55



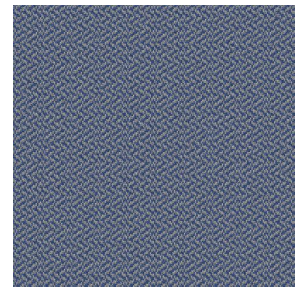
SETO MILO Or 94



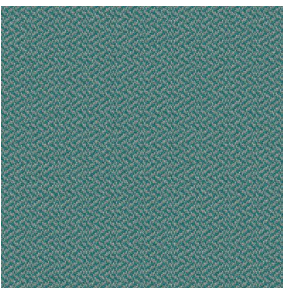
SETO MILO Titanium 98



SETO MILO Violine 105



SETO MILO Bleu 41

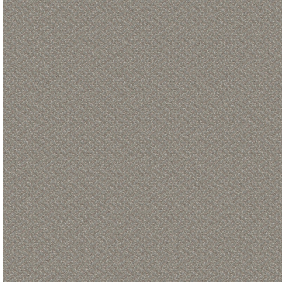


SETO MILO Celadon 135

**drapilux**  
By Sotexpro

DRAPILUX GmbH - Hofenstraße 3, 77694 Kehl - Deutschland

Non-contractual photos and colors - Indicative fitting - Fitting may vary depending on support selected



# SETO MILO Sisal 140

Bestuhlungsstoff

## Technische Eigenschaften



Feuerfestigkeit

Applications **Faltgardinen - Flächenvorhänge - Bestuhlung - Bettläufer - Vorhänge - Kissen - Dekorative Rahmen**

Zusammensetzung **100% feuerfester Polyester**

Gewicht **420 g/m<sup>2</sup>** Breite **150 cm**

Stoffrichtung **Standardrichtung** Eignung **↔ cm ↓ cm**

Pflegehinweis

Beschriftungen **France Terre Textile (R016)**

Mindestbestellmenge **1**

## Technische Eigenschaften

Feuerfestigkeit

M1 / IMO PASS

Beständigkeit

Pilling	<b>4</b>
Formstabilität (%)	
Verzerrung	<b>-2</b>
Querfäden	<b>-1</b>
Martindale (Zyklen)	<b>70000</b>
Bruchdehnung	
Verzerrung	<b>27</b>
Querfäden	<b>22</b>
Bruchlast (daN)	
Verzerrung	<b>110</b>
Querfäden	<b>100</b>

**drapilux**  
By Sotexpro

DRAPILUX GmbH - Hafenstraße 3, 77694 Kehl - Deutschland

Non-contractual photos and colors - Indicative fitting - Fitting may vary depending on support selected