

SCOURTIN



SCOURTIN Beige 63



SCOURTIN Fuchsia 33



SCOURTIN Sapin 126



SCOURTIN Bergamote
121



SCOURTIN Anthracite
38



SCOURTIN Violine 105



SCOURTIN Pacifique 54



SCOURTIN Rose 129



SCOURTIN Blanc 01



SCOURTIN Lin 11



SCOURTIN Naturel 26



SCOURTIN Citrouille
136



SCOURTIN Turquoise 53



SCOURTIN Brun 23



SCOURTIN Hortensia
134



SCOURTIN Rubis 59



SCOURTIN Ficelle 09



SCOURTIN Maïs 37



SCOURTIN Céladon 135



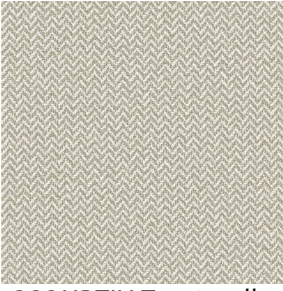
SCOURTIN Ebene 113

drapilux
By Sotexpro

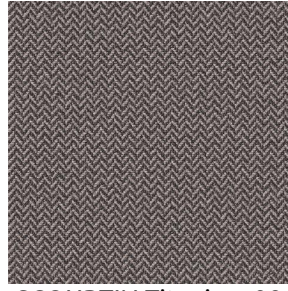
DRAPILUX GmbH - Hofenstraße 3, 77694 Kehl - Deutschland

Non-contractual photos and colors - Indicative fitting - Fitting may vary depending on support selected

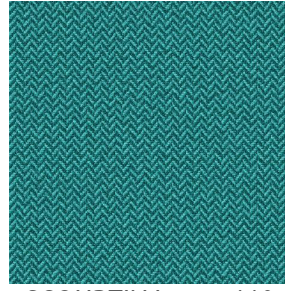
SCOURTIN



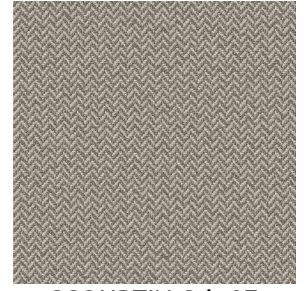
SCOURTIN Tourterelle
138



SCOURTIN Titanium 98



SCOURTIN Lagon 110



SCOURTIN Gris 97

drapilux
By Sotexpro

DRAPILUX GmbH - Hafenstraße 3, 77694 Kehl - Deutschland

Non-contractual photos and colors - Indicative fitting - Fitting may vary depending on support selected

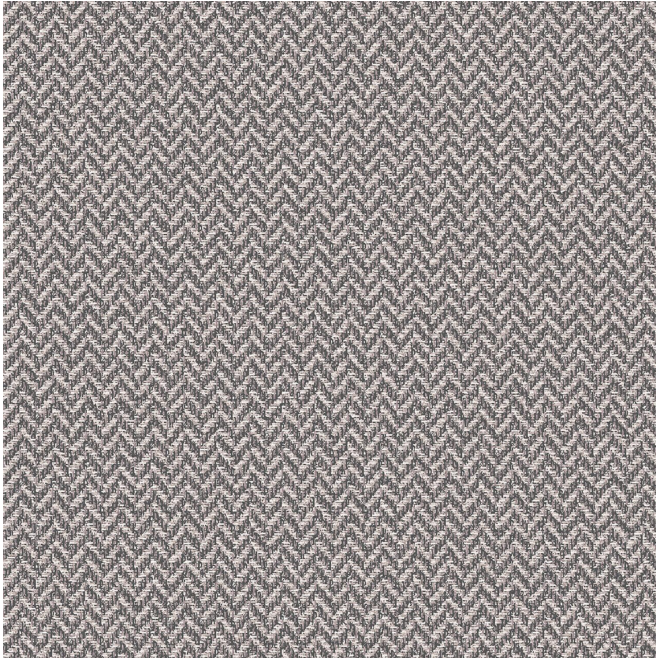
SCOURTIN Orage 123

Gruppe **B**

Eignung: → cm ↓ cm "Eignung kann je nach gewähltem Trägergewebe unterschiedlich sein"



Zur Auswahl des Druckträgers und seiner Breite (Breite), wenden Sie sich bitte an Ihren Verkaufsvertreter. Kontaktieren Sie einen Berater



drapilux
By Sotexpro

DRAPILUX GmbH - Hafenstr. 3, 77694 Kehl - Deutschland

Non-contractual photos and colors - Indicative fitting - Fitting may vary depending on support selected