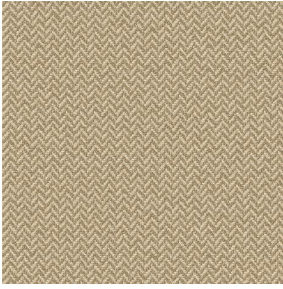
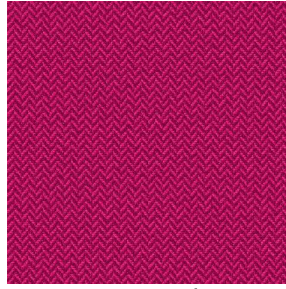


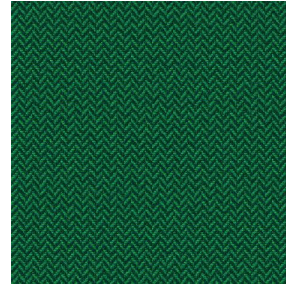
SCOURTIN



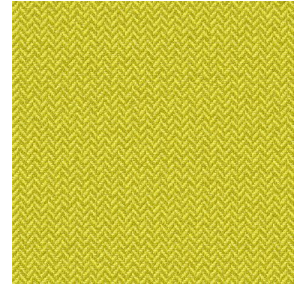
SCOURTIN Beige 63



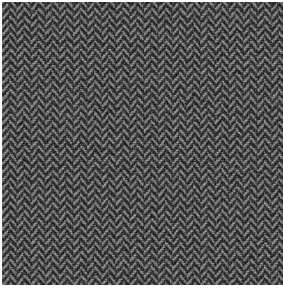
SCOURTIN Fuchsia 33



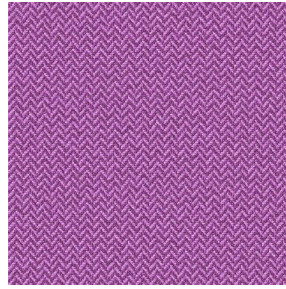
SCOURTIN Sapin 126



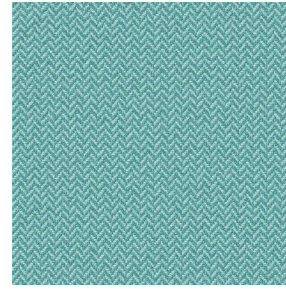
SCOURTIN Bergamote
121



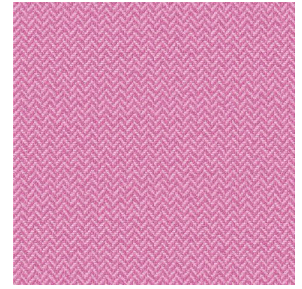
SCOURTIN Anthracite
38



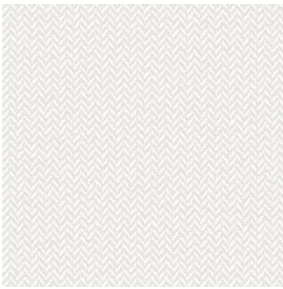
SCOURTIN Violine 105



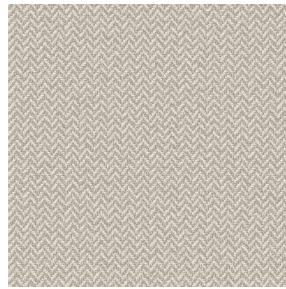
SCOURTIN Pacifique 54



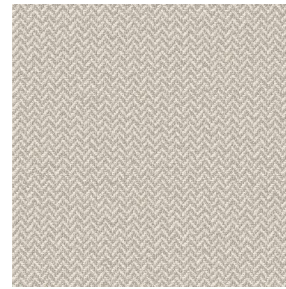
SCOURTIN Rose 129



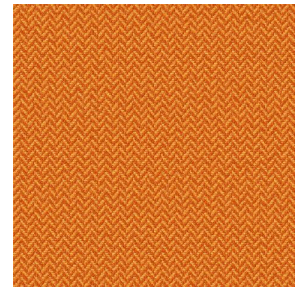
SCOURTIN Blanc 01



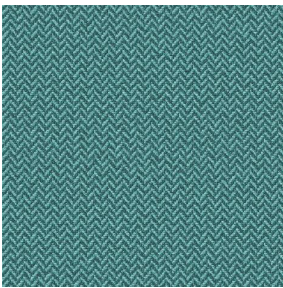
SCOURTIN Lin 11



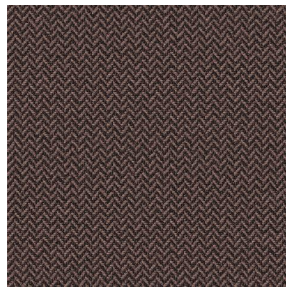
SCOURTIN Naturel 26



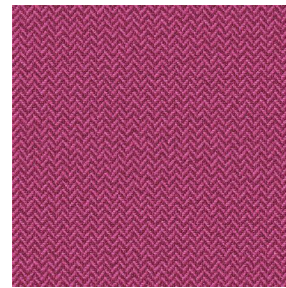
SCOURTIN Citrouille
136



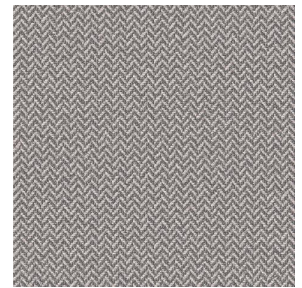
SCOURTIN Turquoise 53



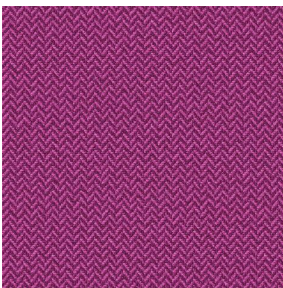
SCOURTIN Brun 23



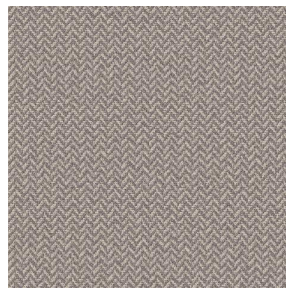
SCOURTIN Hortensia
134



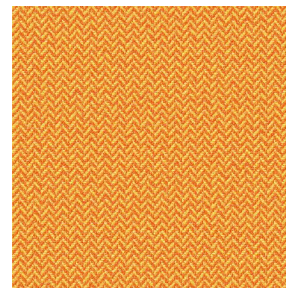
SCOURTIN Orage 123



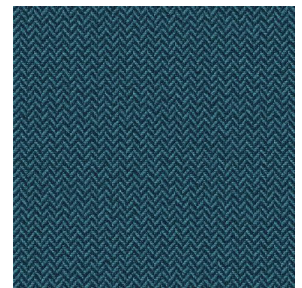
SCOURTIN Rubis 59



SCOURTIN Ficelle 09



SCOURTIN Maïs 37



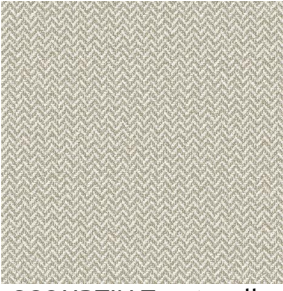
SCOURTIN Céladon 135

drapilux
By Sotexpro

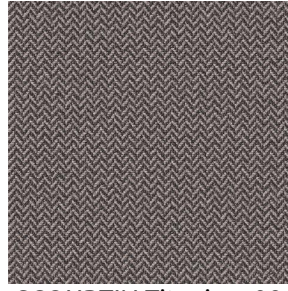
DRAPILUX GmbH - Hofenstraße 3, 77694 Kehl - Deutschland

Non-contractual photos and colors - Indicative fitting - Fitting may vary depending on support selected

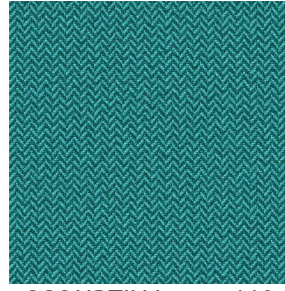
SCOURTIN



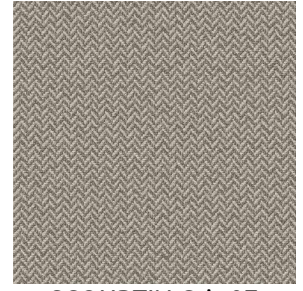
SCOURTIN Tourterelle
138



SCOURTIN Titanium 98



SCOURTIN Lagon 110



SCOURTIN Gris 97

drapilux
By Sotexpro

DRAPILUX GmbH - Hafenstraße 3, 77694 Kehl - Deutschland

Non-contractual photos and colors - Indicative fitting - Fitting may vary depending on support selected

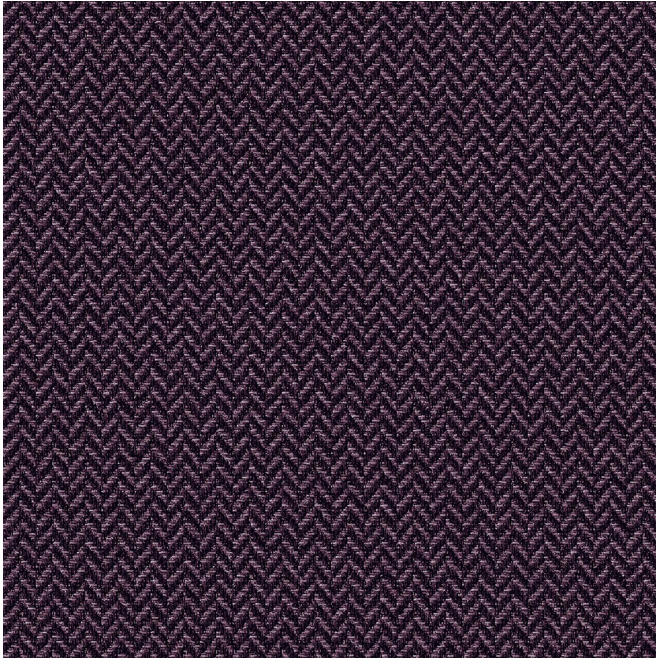
SCOURTIN Ebene 113

Gruppe **C**

Eignung: → cm ↓ cm "Eignung kann je nach gewähltem Trägergewebe unterschiedlich sein"



Zur Auswahl des Druckträgers und seiner Breite (Breite), wenden Sie sich bitte an Ihren Verkaufsvertreter. Kontaktieren Sie einen Berater



drapilux
By Sotexpro

DRAPILUX GmbH - Hafenstr. 3, 77694 Kehl - Deutschland

Non-contractual photos and colors - Indicative fitting - Fitting may vary depending on support selected