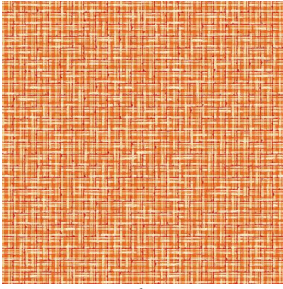
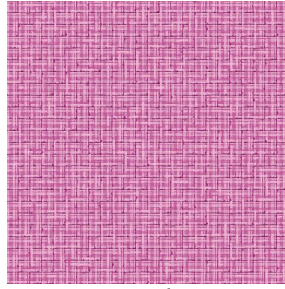


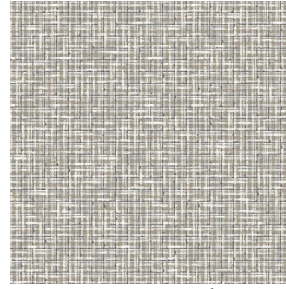
SALIN



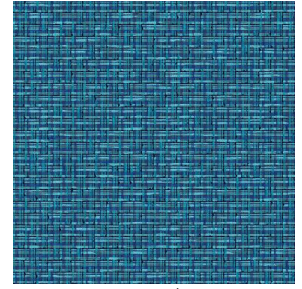
SALIN Abricot 08



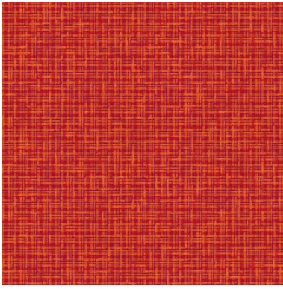
SALIN Fuchsia 33



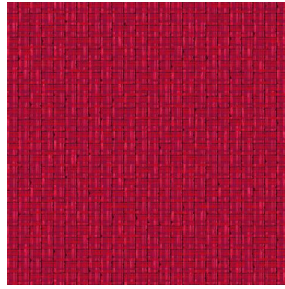
SALIN Naturel 26



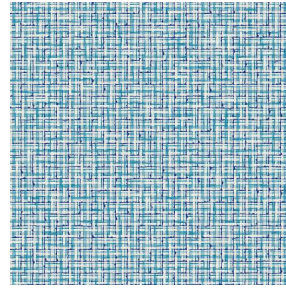
SALIN Océan 91



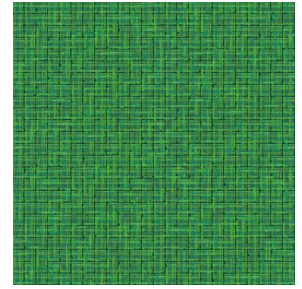
SALIN Orange 15



SALIN Rouge 21



SALIN Turquoise 53



SALIN Vert 24

drapilux
By Sotexpro

DRAPILUX GmbH - Hafenstraße 3, 77694 Kehl - Deutschland

Non-contractual photos and colors - Indicative fitting - Fitting may vary depending on support selected

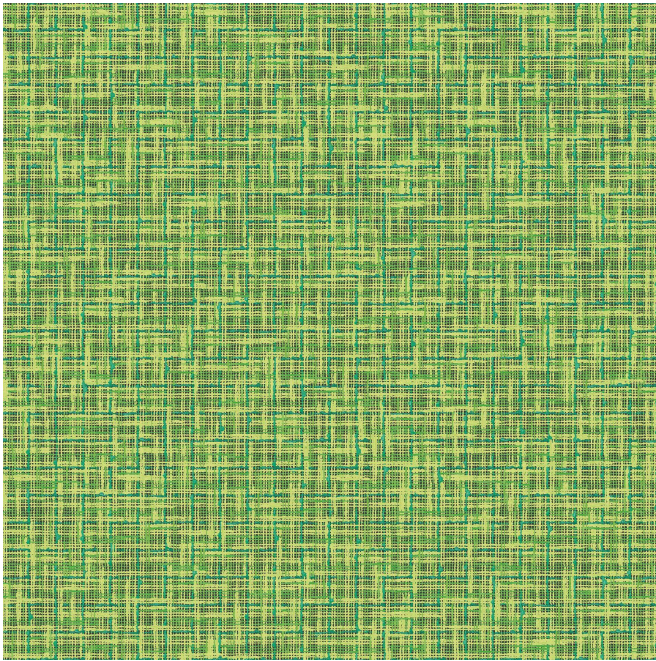
SALIN Anis 62

Gruppe **B**

Eignung: ↔ 0.0 cm ↓ 0.0 cm "Eignung kann je nach gewähltem Trägergewebe unterschiedlich sein"



Zur Auswahl des Druckträgers und seiner Breite (Breite), wenden Sie sich bitte an Ihren Verkaufsvertreter. Kontaktieren Sie einen Berater



drapilux
By Sotexpro

DRAPILUX GmbH - Hafenstr. 3, 77694 Kehl - Deutschland

Non-contractual photos and colors - Indicative fitting - Fitting may vary depending on support selected