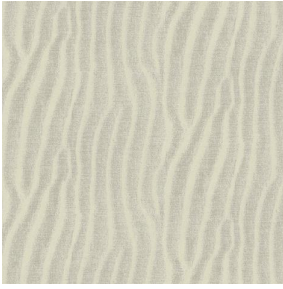
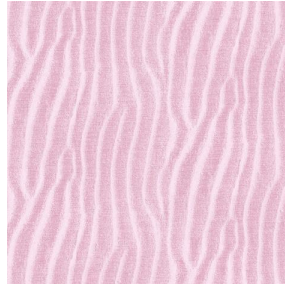


SABLE



SABLE Lin 11



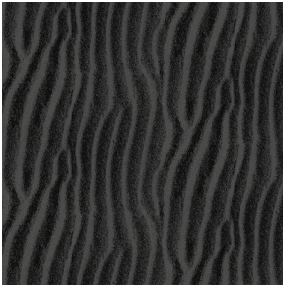
SABLE Rose 129



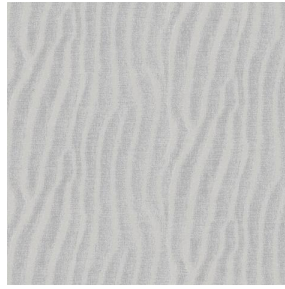
SABLE Sable 67



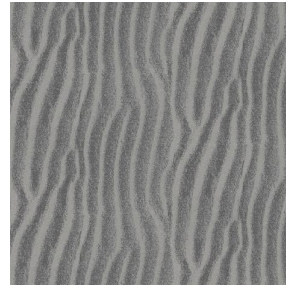
SABLE Ivoire 115



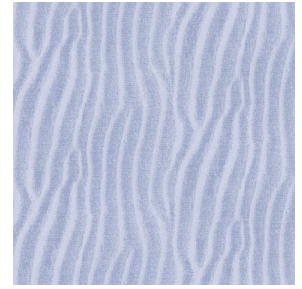
SABLE Noir 10



SABLE Souris 31



SABLE Gris 97



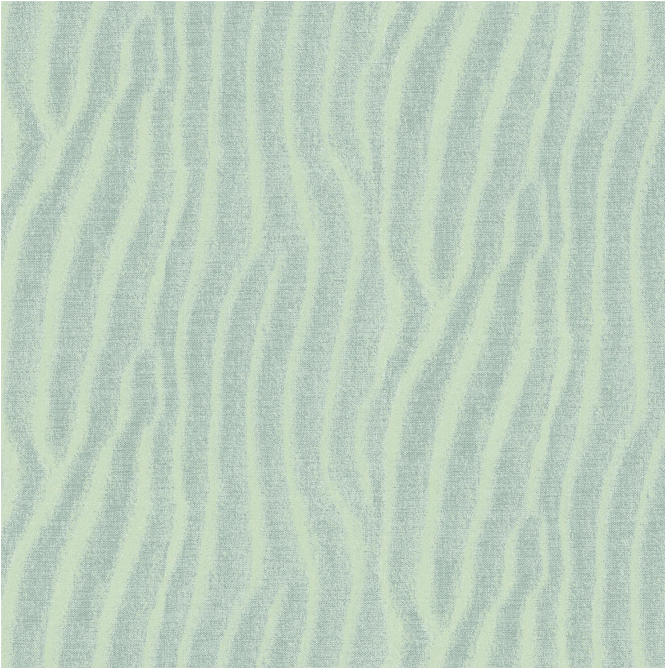
SABLE Jasmin 74

SABLE Absinthe 132

Gruppe **B**

Eignung: ↔ 0.0 cm ↓ 0.0 cm "Eignung kann je nach gewähltem Trägergewebe unterschiedlich sein"

i
Zur Auswahl des Druckträgers und seiner Breite (Breite), wenden Sie sich bitte an Ihren Verkaufsvertreter. Kontaktieren Sie einen Berater



drapilux
By Sotexpro

DRAPILUX GmbH - Hafenstraße 3, 77694 Kehl - Deutschland

Non-contractual photos and colors - Indicative fitting - Fitting may vary depending on support selected