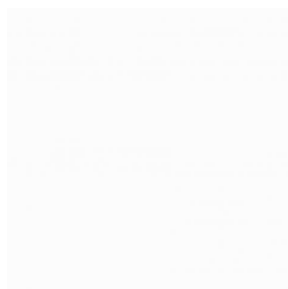
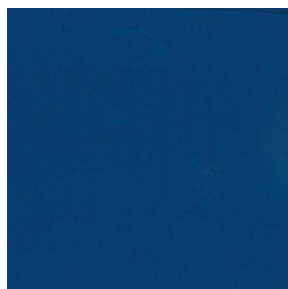


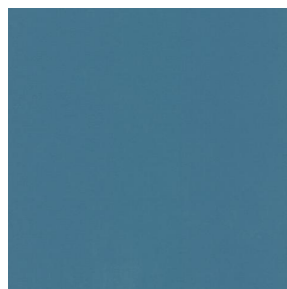
OPAQ



OPAQ Blanc 01



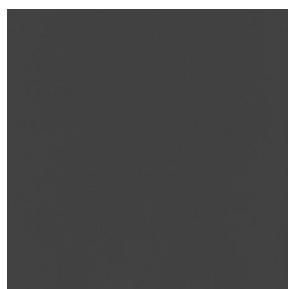
OPAQ Océan 91



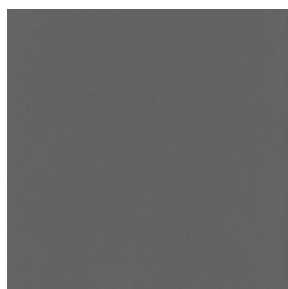
OPAQ Arctique 58



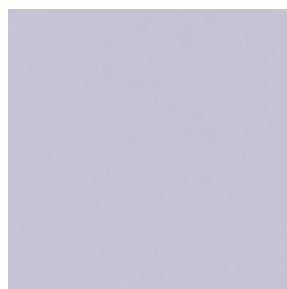
OPAQ Abricot 08



OPAQ Anthracite 38



OPAQ Sienne 29



OPAQ Perle 96



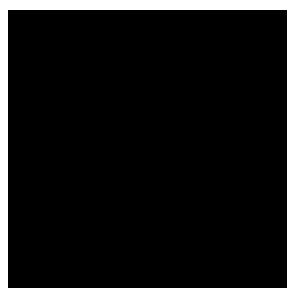
OPAQ Crème 02



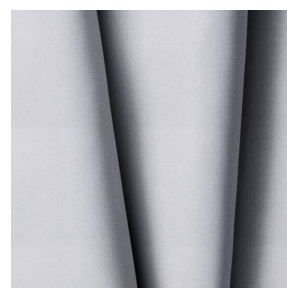
OPAQ Mastic 48



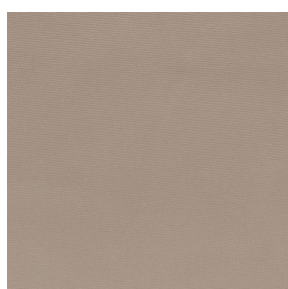
OPAQ Taupe 95



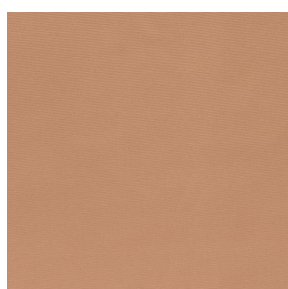
OPAQ Noir 10



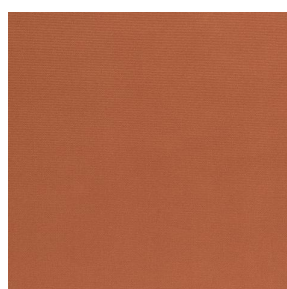
OPAQ BPI 00



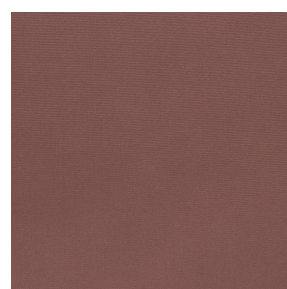
OPAQ Beige 63



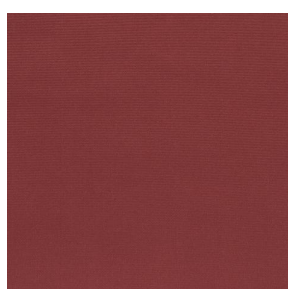
OPAQ Safran 49



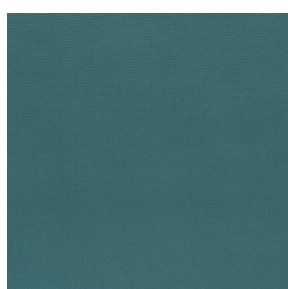
OPAQ Terre 107



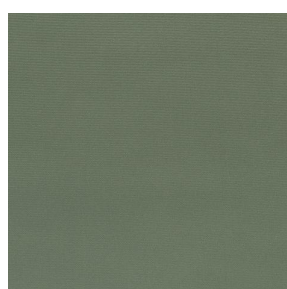
OPAQ Chamois 111



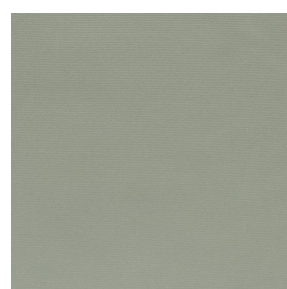
OPAQ Bordeaux 04



OPAQ Sapin 126



OPAQ Kaki 148

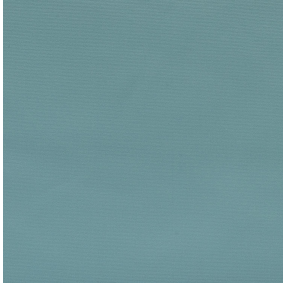


OPAQ Amande 75

drapilux
By Sotexpro

DRAPILUX GmbH - Hafenstraße 3, 77694 Kehl - Deutschland

Non-contractual photos and colors - Indicative fitting - Fitting may vary depending on support selected



OPAQ Ecume 82

Dieser einfarbige Abdunkelungsstoff hat keine Brandschutzklassifizierung.

Technische Eigenschaften

Applications Faltgardinen - Flächenvorhänge - Innenfutter - Vorhänge

Zusammensetzung 100% Polyester mit weiß meliertem Acryl-Trägermaterial

Gewicht 280 g/m² Breite 280 cm

Stoffrichtung Rückwärts- oder Standardrichtung Eignung ↔ cm ↑ cm

Pflegehinweis 

Mindestbestellmenge 25

Technische Eigenschaften

Feuerfestigkeit	nicht klassifiziert	
Optischer Index	Lichtreflexion :	82 %
	Lichtabsorption :	18 %
	Lichtdurchlässigkeit :	0 %
Thermaler Index	Sonnenreflexion :	74 %
	Sonnenabsorption :	26 %
	Sonnendurchlässigkeit :	0 %
	UV-Durchlässigkeit :	0 %
	Gtot :	Gt 33 % Fc 55 %
Beständigkeit	Lichteinheit (Einheiten Klasse/8)	5
	Formstabilität (%)	
	Verzerrung	-0.5
	Querfäden	0
	Bruchdehnung	
	Verzerrung	26
	Querfäden	15
	Bruchlast (daN)	
	Verzerrung	62
Querfäden	31	

drapilux
By Sotexpro

DRAPILUX GmbH - Hafenstraße 3, 77694 Kehl - Deutschland

Non-contractual photos and colors - Indicative fitting - Fitting may vary depending on supports selected