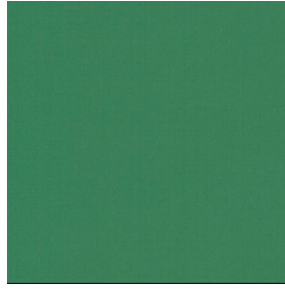


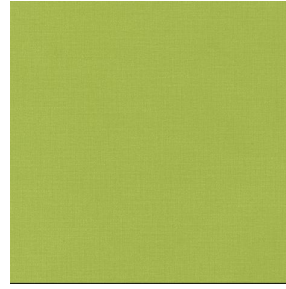
OPALE 2



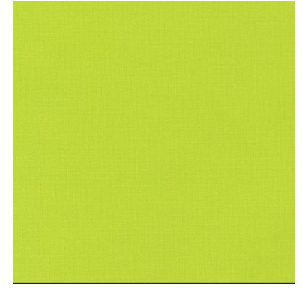
OPALE 2 Océan 91



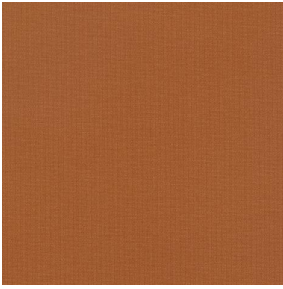
OPALE 2 Cactus 09



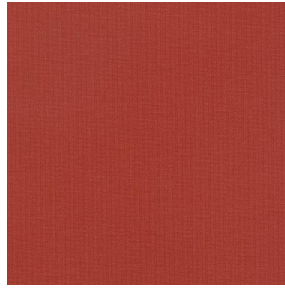
OPALE 2 Mousse 92



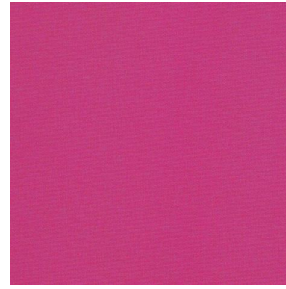
OPALE 2 Agrume 69



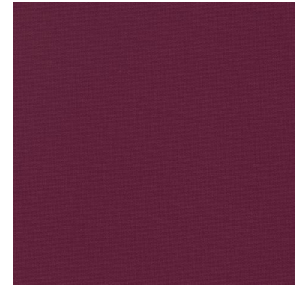
OPALE 2 Terracotta 65



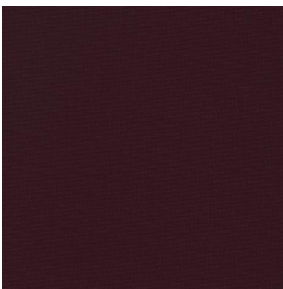
OPALE 2 Tomette 60



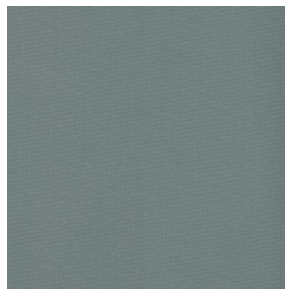
OPALE 2 Pivoine 57



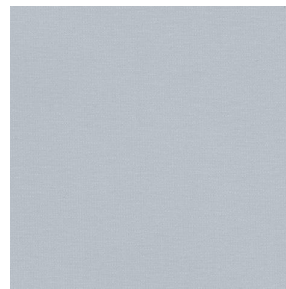
OPALE 2 Rubis 08



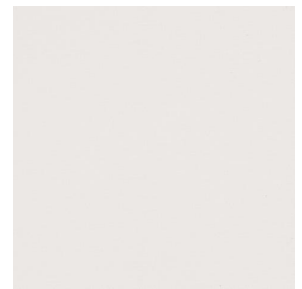
OPALE 2 Aubergine 27



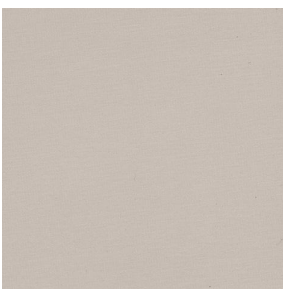
OPALE 2 Anthracite 38



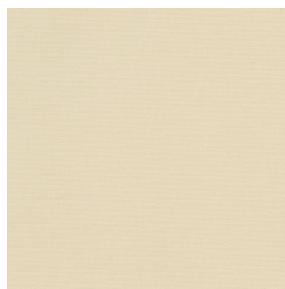
OPALE 2 Souris 40



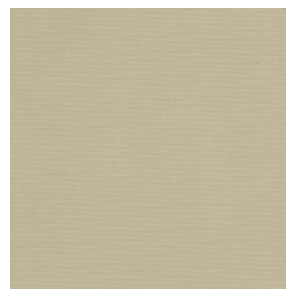
OPALE 2 Nacre 04



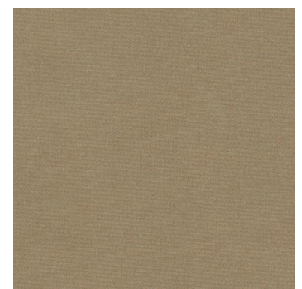
OPALE 2 Crème 02



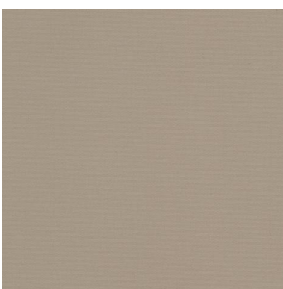
OPALE 2 Sable 67



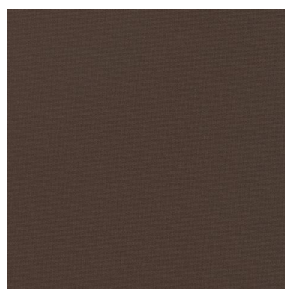
OPALE 2 Beige 63



OPALE 2 Brun 23



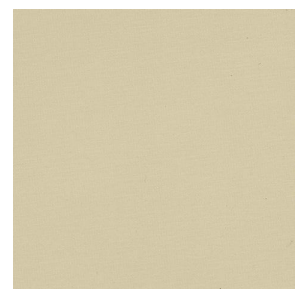
OPALE 2 Mastic 48



OPALE 2 Moka 12



OPALE 2 Marine 25



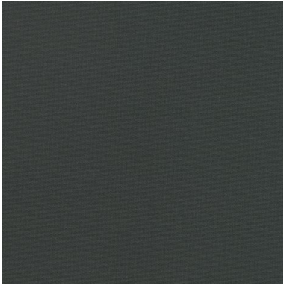
OPALE 2 Paille 06

drapilux
By Sotexpro

DRAPILUX GmbH - Hafenstraße 3, 77694 Kehl - Deutschland

Non-contractual photos and colors - Indicative fitting - Fitting may vary depending on support selected

OPALE 2



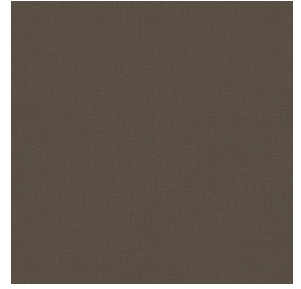
OPALE 2 Titanium 98



OPALE 2 Noir 36



OPALE 2 emeraude 88



OPALE 2 taupe 95



OPALE 2 absinthe 132



OPALE 2 lin 11



OPALE 2 Cyan 90

Dieser einfarbige Stoff blockiert die Lichteinstrahlung sehr effizient und ist in einer breiten Farbpalette erhältlich.

Technische Eigenschaften



Feuerfestigkeit

Applications Falgardinen - Rollos - Flächenvorhänge - Vorhänge

Zusammensetzung 100% Polyester mit weiß meliertem Acryl-Trägermaterial

Gewicht 290 g/m² Breite 140 cm

Stoffrichtung Standardrichtung Eignung ↔ cm ↓ cm

Pflegehinweis     

Mindestbestellmenge 1



Technische Eigenschaften

Feuerfestigkeit	M1 / IMO PASS		
Optischer Index	Lichtreflexion :	72 %	
	Lichtabsorption :	28 %	
	Lichtdurchlässigkeit :	0 %	
Thermaler Index	Sonnenreflexion :	65 %	
	Sonnenabsorption :	35 %	
	Sonnendurchlässigkeit :	0 %	
	UV-Durchlässigkeit :	0 %	
	Gtot :	Gt 35 % Fc 60 %	
Beständigkeit	Lichteichtheit (Einheiten Klasse/8)	5	
	Bruchdehnung	Verzerrung	35
		Querfäden	11

drapilux
By Sotexpro

DRAPILUX GmbH - Hafenstraße 3, 77694 Kehl - Deutschland

Non-contractual photos and colors - Indicative fitting - Fitting may vary depending on supports selected