

OPALE 2



OPALE 2 Océan 91



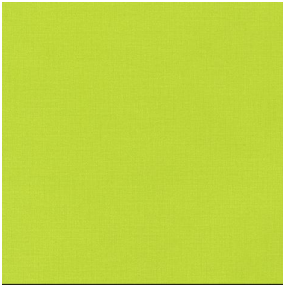
OPALE 2 Cyan 90



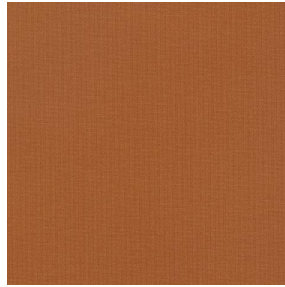
OPALE 2 Cactus 09



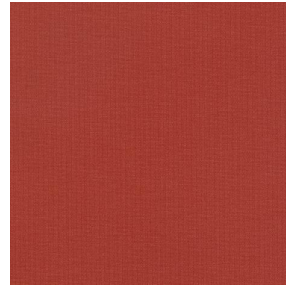
OPALE 2 Mousse 92



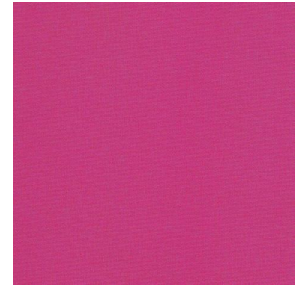
OPALE 2 Agrume 69



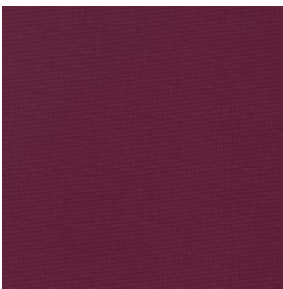
OPALE 2 Terracotta 65



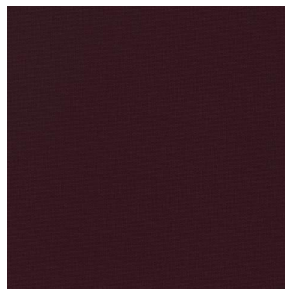
OPALE 2 Tomette 60



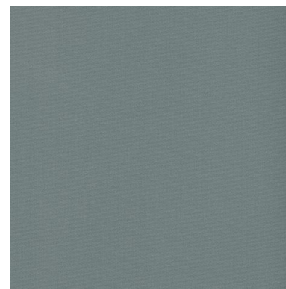
OPALE 2 Pivoine 57



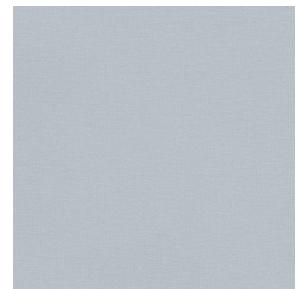
OPALE 2 Rubis 08



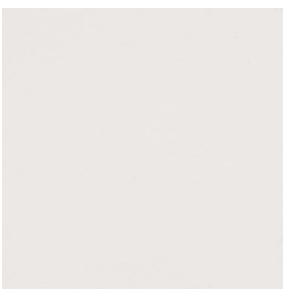
OPALE 2 Aubergine 27



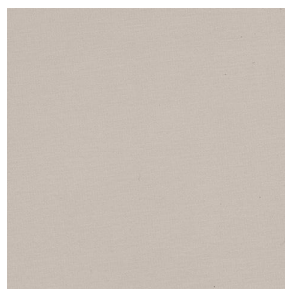
OPALE 2 Anthracite 38



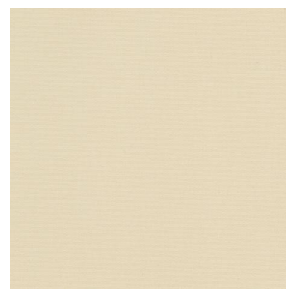
OPALE 2 Souris 40



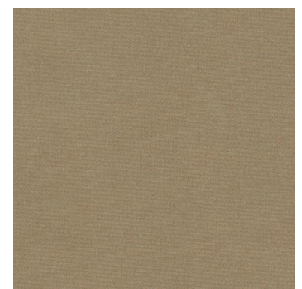
OPALE 2 Nacre 04



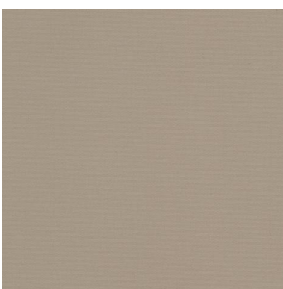
OPALE 2 Crème 02



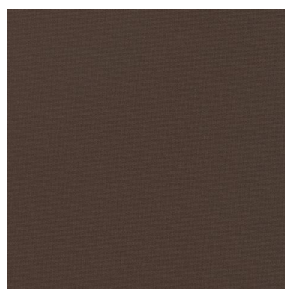
OPALE 2 Sable 67



OPALE 2 Brun 23



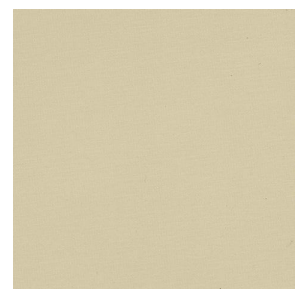
OPALE 2 Mastic 48



OPALE 2 Moka 12



OPALE 2 Marine 25



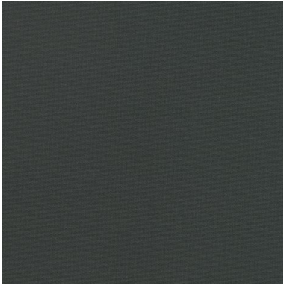
OPALE 2 Paille 06

drapilux
By Sotexpro

DRAPILUX GmbH - Hafenstraße 3, 77694 Kehl - Deutschland

Non-contractual photos and colors - Indicative fitting - Fitting may vary depending on support selected

OPALE 2



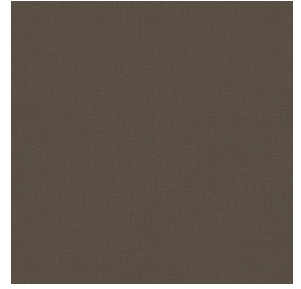
OPALE 2 Titanium 98



OPALE 2 Noir 36



OPALE 2 emeraude 88



OPALE 2 taupe 95



OPALE 2 absinthe 132



OPALE 2 lin 11



OPALE 2 Beige 63

Dieser einfarbige Stoff blockiert die Lichteinstrahlung sehr effizient und ist in einer breiten Farbpalette erhältlich.

Technische Eigenschaften



Feuerfestigkeit

Applications **Faltgardinen - Rollos - Flächenvorhänge - Vorhänge**

Zusammensetzung **100% Polyester mit weiß meliertem Acryl-Trägermaterial**

Gewicht **290 g/m²** Breite **140 cm**

Stoffrichtung **Standardrichtung** Eignung **↔ cm ↓ cm**

Pflegehinweis     

Mindestbestellmenge **1**



Technische Eigenschaften

Feuerfestigkeit	M1 / IMO PASS
Optischer Index	Lichtreflexion : 72 %
	Lichtabsorption : 28 %
	Lichtdurchlässigkeit : 0 %
Thermaler Index	Sonnenreflexion : 65 %
	Sonnenabsorption : 35 %
	Sonnendurchlässigkeit : 0 %
	UV-Durchlässigkeit : 0 %
	Gtot : Gt 35 % Fc 60 %
Beständigkeit	Lichteichtheit (Einheiten Klasse/8) 5
	Bruchdehnung
	Verzerrung 35
	Querfäden 11