

# OPALE 2



OPALE 2 Océan 91



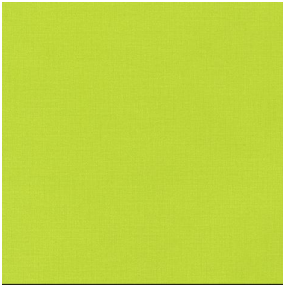
OPALE 2 Cyan 90



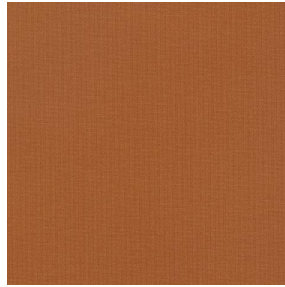
OPALE 2 Cactus 09



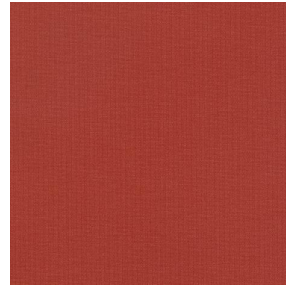
OPALE 2 Mousse 92



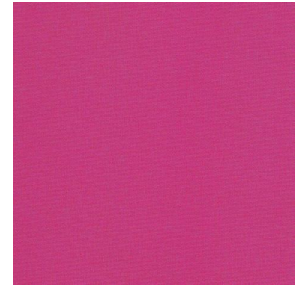
OPALE 2 Agrume 69



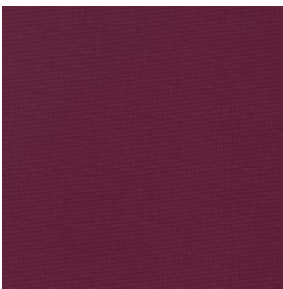
OPALE 2 Terracotta 65



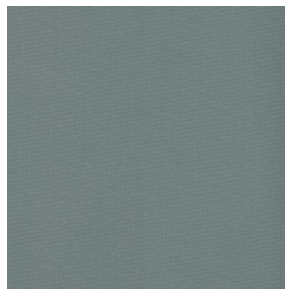
OPALE 2 Tomette 60



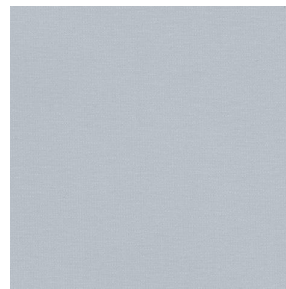
OPALE 2 Pivoine 57



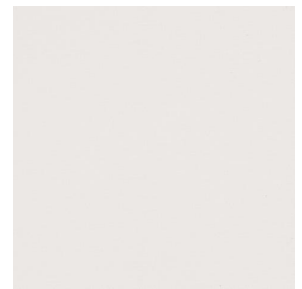
OPALE 2 Rubis 08



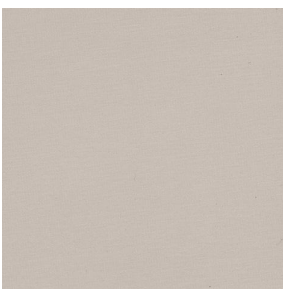
OPALE 2 Anthracite 38



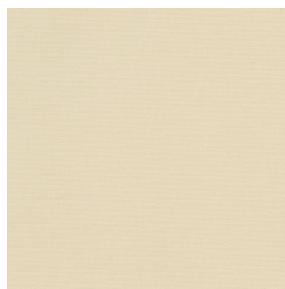
OPALE 2 Souris 40



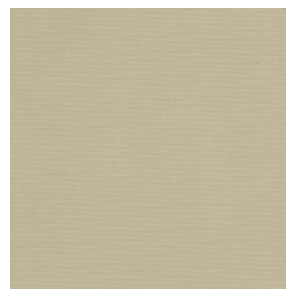
OPALE 2 Nacre 04



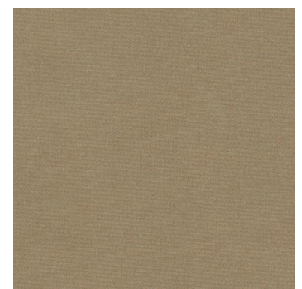
OPALE 2 Crème 02



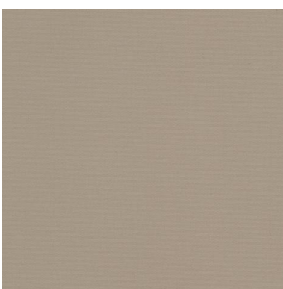
OPALE 2 Sable 67



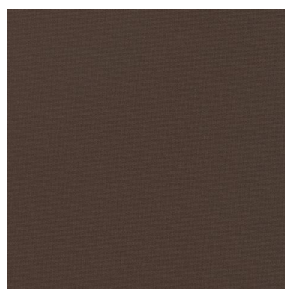
OPALE 2 Beige 63



OPALE 2 Brun 23



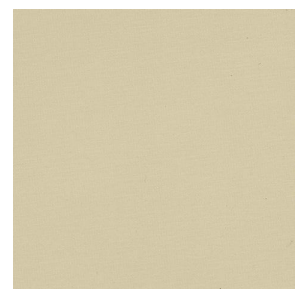
OPALE 2 Mastic 48



OPALE 2 Moka 12



OPALE 2 Marine 25



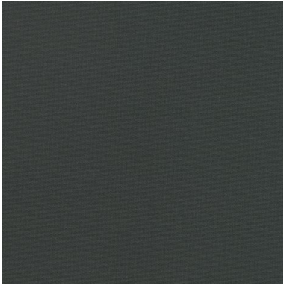
OPALE 2 Paille 06

**drapilux**  
By Sotexpro

DRAPILUX GmbH - Hafenstraße 3, 77694 Kehl - Deutschland

Non-contractual photos and colors - Indicative fitting - Fitting may vary depending on support selected

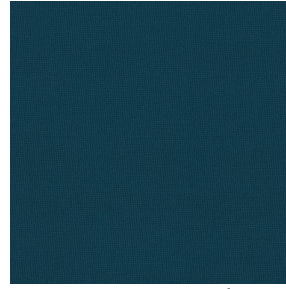
# OPALE 2



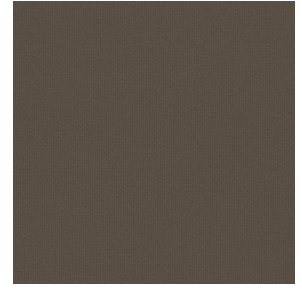
OPALE 2 Titanium 98



OPALE 2 Noir 36



OPALE 2 emeraude 88



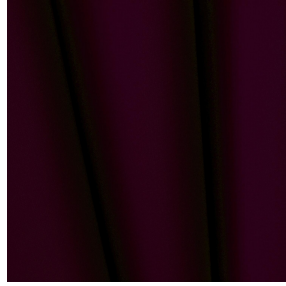
OPALE 2 taupe 95



OPALE 2 absinthe 132



OPALE 2 lin 11



# OPALE 2 Aubergine 27

Dieser einfarbige Stoff blockiert die Lichteinstrahlung sehr effizient und ist in einer breiten Farbpalette erhältlich.

## Technische Eigenschaften



Feuerfestigkeit

Applications Falgardinen - Rollos - Flächenvorhänge - Vorhänge

Zusammensetzung 100% Polyester mit weiß meliertem Acryl-Trägermaterial

Gewicht 290 g/m<sup>2</sup> Breite 140 cm

Stoffrichtung Standardrichtung Eignung ↔ cm ↓ cm

Pflegehinweis     

Mindestbestellmenge 1



## Technische Eigenschaften

|                 |                                     |                 |
|-----------------|-------------------------------------|-----------------|
| Feuerfestigkeit | M1 / IMO PASS                       |                 |
| Optischer Index | Lichtreflexion :                    | 72 %            |
|                 | Lichtabsorption :                   | 28 %            |
|                 | Lichtdurchlässigkeit :              | 0 %             |
| Thermaler Index | Sonnenreflexion :                   | 65 %            |
|                 | Sonnenabsorption :                  | 35 %            |
|                 | Sonnendurchlässigkeit :             | 0 %             |
|                 | UV-Durchlässigkeit :                | 0 %             |
|                 | Gtot :                              | Gt 35 % Fc 60 % |
| Beständigkeit   | Lichteichtheit (Einheiten Klasse/8) | 5               |
|                 | Bruchdehnung                        |                 |
|                 | Verzerrung                          | 35              |
|                 | Querfäden                           | 11              |

**drapilux**  
By Sotexpro

DRAPILUX GmbH - Hafenstraße 3, 77694 Kehl - Deutschland

Non-contractual photos and colors - Indicative fitting - Fitting may vary depending on supports selected