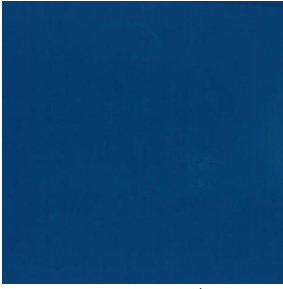
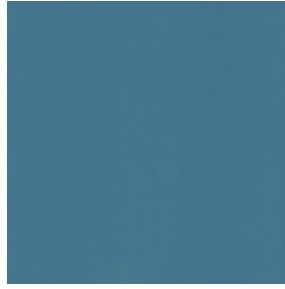


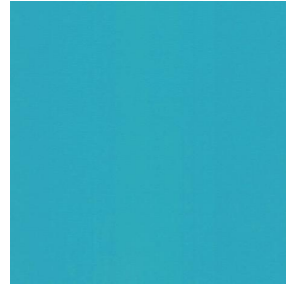
# NOCTURNE



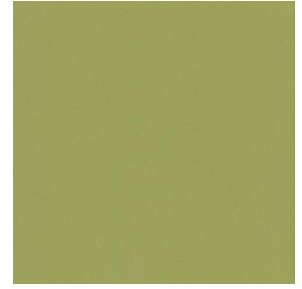
NOCTURNE Océan 91



NOCTURNE Arctique 58



NOCTURNE Cyan 90



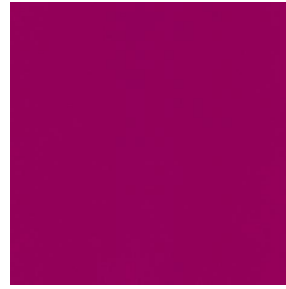
NOCTURNE Mousse 92



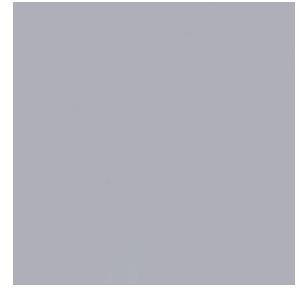
NOCTURNE Abricot 08



NOCTURNE Orange 15



NOCTURNE Fuchsia 33



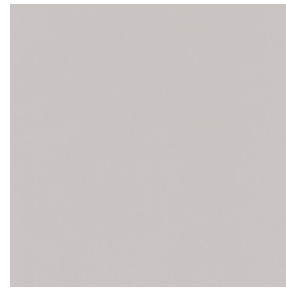
NOCTURNE Perle 96



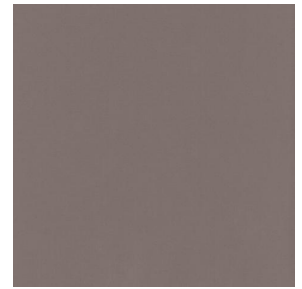
NOCTURNE Gris  03



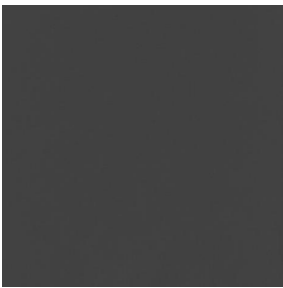
NOCTURNE Cr me 02



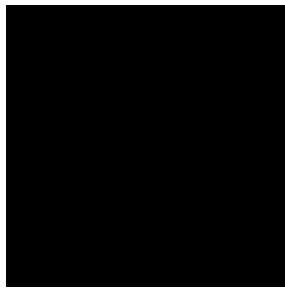
NOCTURNE Mastic 48



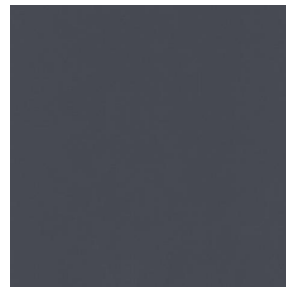
NOCTURNE Brun 23



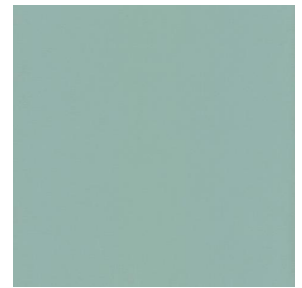
NOCTURNE Taupe 95



NOCTURNE Noir 10



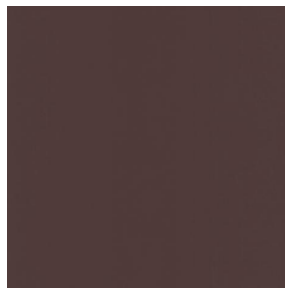
NOCTURNE anthracite  
38



NOCTURNE absinthe  
132



NOCTURNE aubergine  
27



NOCTURNE Chamois  
111



NOCTURNE Bordeaux  
04



NOCTURNE Rubis 59

**drapilux**  
By Sotexpro

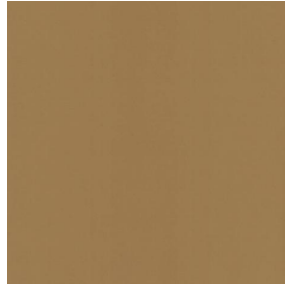
DRAPILUX GmbH - Hafenstra e 3, 77694 Kehl - Deutschland

Non-contractual photos and colors - Indicative fitting - Fitting may vary depending on support selected

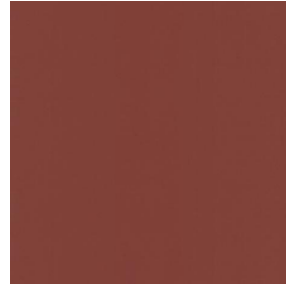
# NOCTURNE



NOCTURNE Saumon  
143



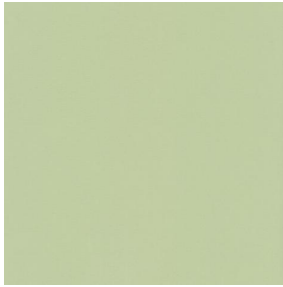
NOCTURNE Or 94



NOCTURNE Terre 107



NOCTURNE Amande 75



NOCTURNE  
Bergamotte 121



NOCTURNE Tilleul 103



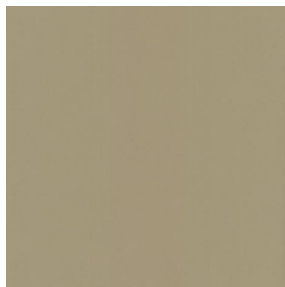
NOCTURNE Prairie 125



NOCTURNE Sapin 126



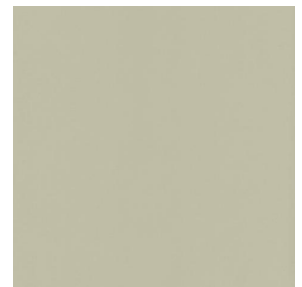
NOCTURNE Ecume 82



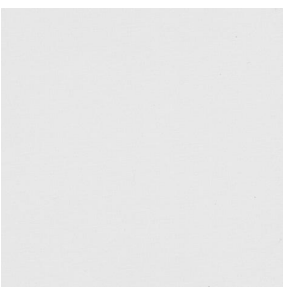
NOCTURNE Beige 63



NOCTURNE Mordoré  
133



NOCTURNE Galet 147



NOCTURNE BPI 00

**drapilux**  
By Sotexpro

DRAPILUX GmbH - Hafenstraße 3, 77694 Kehl - Deutschland

Non-contractual photos and colors - Indicative fitting - Fitting may vary depending on support selected

# NOCTURNE Sienne 29

Dieser einfarbige Stoff blockiert die Lichteinstrahlung sehr effizient und ist in einer breiten Farbpalette erhältlich.

## Technische Eigenschaften



Feuerfestigkeit



Wärmeschutz

Applications Faltgardinen - Flächenvorhänge - Innenfutter - Vorhänge

Zusammensetzung 100% Polyester mit weiß meliertem Acryl-Trägermaterial

Gewicht 280 g/m<sup>2</sup> Breite 280 cm

Stoffrichtung Rückwärts- oder Standardrichtung Eignung ↔ cm ↑ cm

Pflegehinweis

Mindestbestellmenge 1

## Technische Eigenschaften

Feuerfestigkeit	M1 / BS 5867 TYPE C / B1 / IMO PASS		
Optischer Index	Lichtreflexion :	71 %	
	Lichtabsorption :	29 %	
	Lichtdurchlässigkeit :	0 %	
Thermaler Index	Sonnenreflexion :	66 %	
	Sonnenabsorption :	34 %	
	Sonnendurchlässigkeit :	0 %	
	UV-Durchlässigkeit :	0 %	
	Gtot :	Gt 35 % Fc 60 %	
Beständigkeit	Lichteinheit (Einheiten Klasse/8)	5	
	Pilling	3-4	
	Formstabilität (%)	Verzerrung	-0,5
		Querfäden	0
		Martindale (Zyklen)	40000
	Bruchdehnung	Verzerrung	19
		Querfäden	22
		Bruchlast (daN)	Verzerrung
	Querfäden		57

**drapilux**  
By Sotexpro

DRAPILUX GmbH - Hofenstraße 3, 77694 Kehl - Deutschland

Non-contractual photos and colors - Indicative fitting - Fitting may vary depending on support selected