

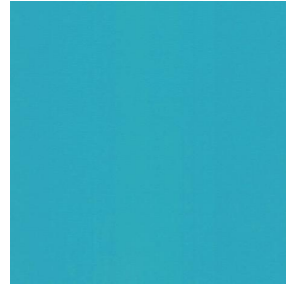
# NOCTURNE



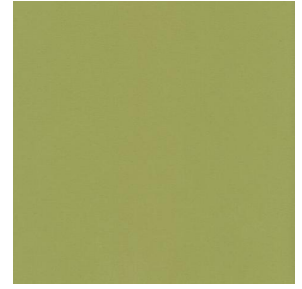
NOCTURNE Océan 91



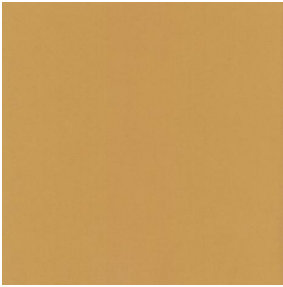
NOCTURNE Arctique 58



NOCTURNE Cyan 90



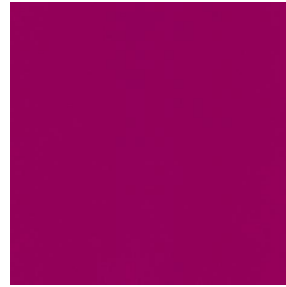
NOCTURNE Mousse 92



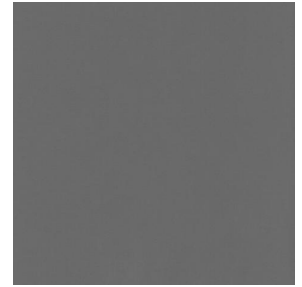
NOCTURNE Abricot 08



NOCTURNE Orange 15



NOCTURNE Fuchsia 33



NOCTURNE Sienne 29



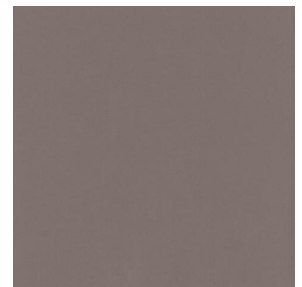
NOCTURNE Perle 96



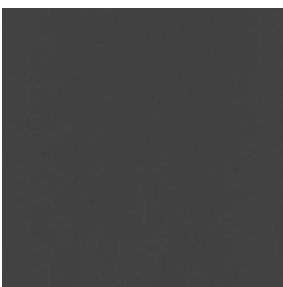
NOCTURNE Crème 02



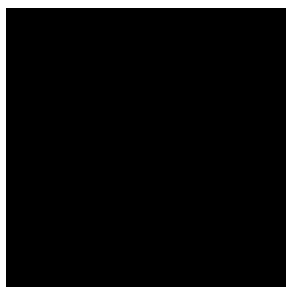
NOCTURNE Mastic 48



NOCTURNE Brun 23



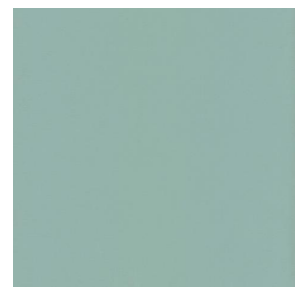
NOCTURNE Taupe 95



NOCTURNE Noir 10



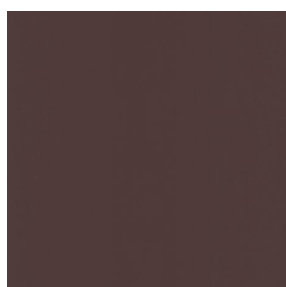
NOCTURNE anthracite  
38



NOCTURNE absinthe  
132



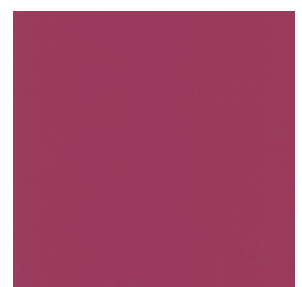
NOCTURNE aubergine  
27



NOCTURNE Chamois  
111



NOCTURNE Bordeaux  
04



NOCTURNE Rubis 59

**drapilux**  
By Sotexpro

DRAPILUX GmbH - Hafenstraße 3, 77694 Kehl - Deutschland

Non-contractual photos and colors - Indicative fitting - Fitting may vary depending on support selected

# NOCTURNE



NOCTURNE Saumon  
143



NOCTURNE Or 94



NOCTURNE Terre 107



NOCTURNE Amande 75



NOCTURNE  
Bergamotte 121



NOCTURNE Tilleul 103



NOCTURNE Prairie 125



NOCTURNE Sapin 126



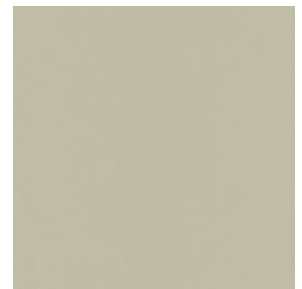
NOCTURNE Ecume 82



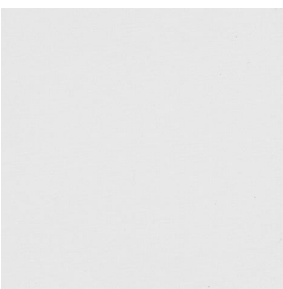
NOCTURNE Beige 63



NOCTURNE Mordoré  
133



NOCTURNE Galet 147

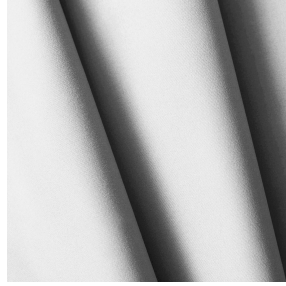


NOCTURNE BPI 00

**drapilux**  
By Sotexpro

DRAPILUX GmbH - Hafenstraße 3, 77694 Kehl - Deutschland

Non-contractual photos and colors - Indicative fitting - Fitting may vary depending on support selected



# NOCTURNE Gris  03

Dieser einfarbige Stoff blockiert die Lichteinstrahlung sehr effizient und ist in einer breiten Farbpalette erhaltlich.

## Technische Eigenschaften



Feuerfestigkeit



Warmeschutz

Applications Innenfutter - Vorhange - Faltgardinen - Flachenvorhange

Zusammensetzung 100% Polyester mit wei meliertem Acryl-Tragermaterial

Gewicht 280 g/m<sup>2</sup> Breite 280 cm

Stoffrichtung Ruckwarts- oder Standardrichtung Eignung ↔ cm ↑ cm

Pflegehinweis

Mindestbestellmenge 1

## Technische Eigenschaften

Feuerfestigkeit	M1 / BS 5867 TYPE C / B1 / IMO PASS		
Optischer Index	Lichtreflexion :	71 %	
	Lichtabsorption :	29 %	
	Lichtdurchlassigkeit :	0 %	
Thermaler Index	Sonnenreflexion :	66 %	
	Sonnenabsorption :	34 %	
	Sonnendurchlassigkeit :	0 %	
	UV-Durchlassigkeit :	0 %	
	Gtot :	Gt 35 % Fc 60 %	
Bestandigkeit	Lichteichteit (Einheiten Klasse/8)	4	
	Pilling	3-4	
	Formstabilitat (%)	Verzerrung	-0,5
		Querfaden	0
	Martindale (Zyklen)	40000	
	Bruchdehnung	Verzerrung	19
		Querfaden	22
	Bruchlast (daN)	Verzerrung	37
		Querfaden	57



DRAPILUX GmbH - Hofenstrae 3, 77694 Kehl - Deutschland

Non-contractual photos and colors - Indicative fitting - Fitting may vary depending on support selected