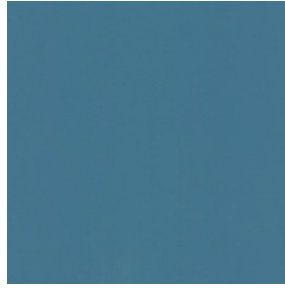


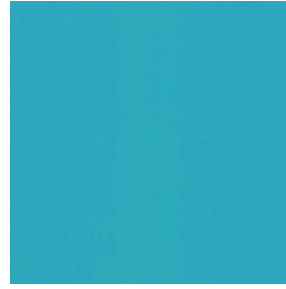
NOCTURNE



NOCTURNE Océan 91



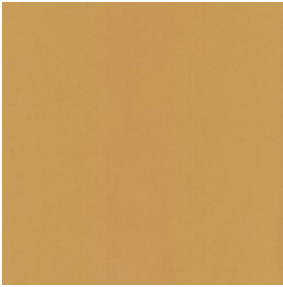
NOCTURNE Arctique 58



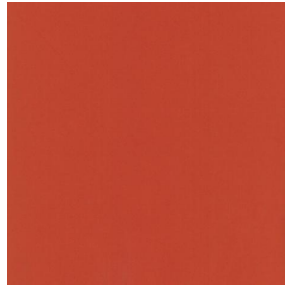
NOCTURNE Cyan 90



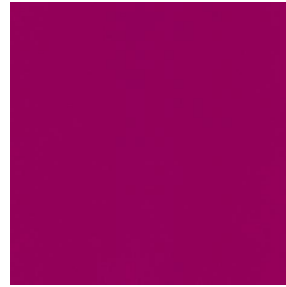
NOCTURNE Mousse 92



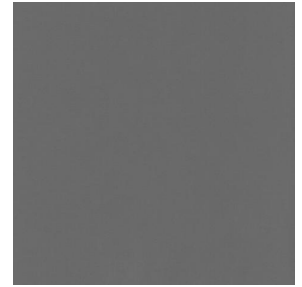
NOCTURNE Abricot 08



NOCTURNE Orange 15



NOCTURNE Fuchsia 33



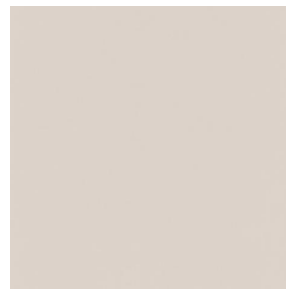
NOCTURNE Sienne 29



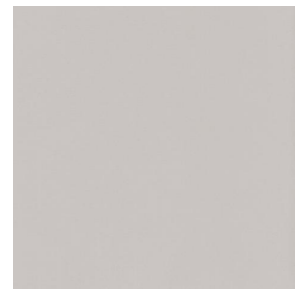
NOCTURNE Perle 96



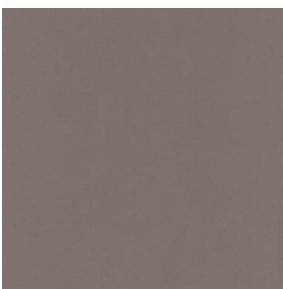
NOCTURNE Grisé 03



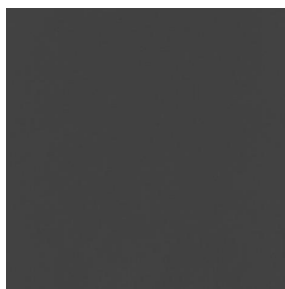
NOCTURNE Crème 02



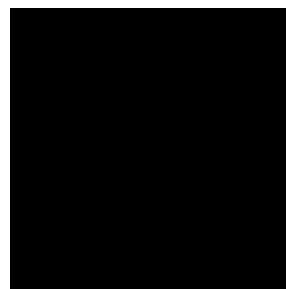
NOCTURNE Mastic 48



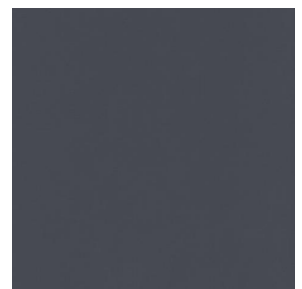
NOCTURNE Brun 23



NOCTURNE Taupe 95



NOCTURNE Noir 10



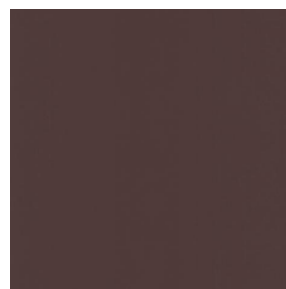
NOCTURNE anthracite
38



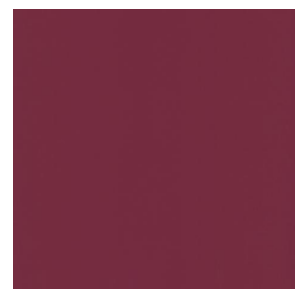
NOCTURNE absinthe
132



NOCTURNE aubergine
27



NOCTURNE Chamois
111



NOCTURNE Bordeaux
04

drapilux
By Sotexpro

DRAPILUX GmbH - Hafenstraße 3, 77694 Kehl - Deutschland

Non-contractual photos and colors - Indicative fitting - Fitting may vary depending on support selected

NOCTURNE



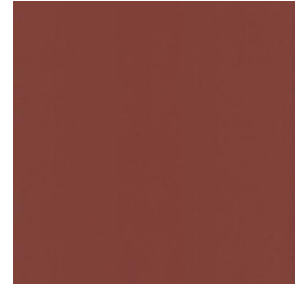
NOCTURNE Rubis 59



NOCTURNE Saumon
143



NOCTURNE Or 94



NOCTURNE Terre 107



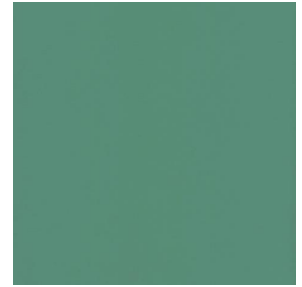
NOCTURNE Amande 75



NOCTURNE
Bergamotte 121



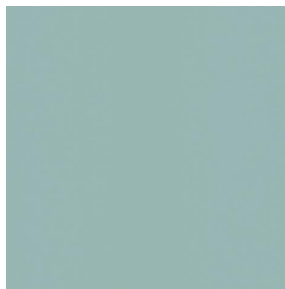
NOCTURNE Tilleul 103



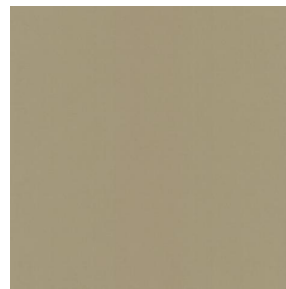
NOCTURNE Prairie 125



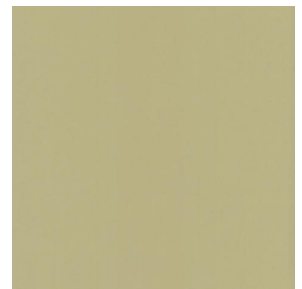
NOCTURNE Sapin 126



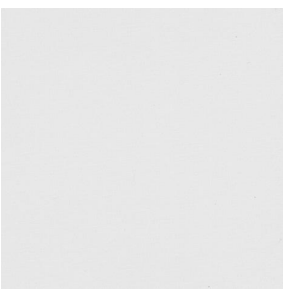
NOCTURNE Ecume 82



NOCTURNE Beige 63



NOCTURNE Mordoré
133



NOCTURNE BPI 00

NOCTURNE Galet 147

Dieser Abdunkelungsstoff ist sehr effizient. Er ist in einer breiten Farbpalette erhältlich

Technische Eigenschaften



Feuerfestigkeit



Wärmeschutz

Applications Faltgardinen - Flächenvorhänge - Innenfutter - Vorhänge

Zusammensetzung 100% Polyester mit weiß meliertem Acryl-Trägermaterial

Gewicht 280 g/m² Breite 280 cm

Stoffrichtung Rückwärts- oder Standardrichtung Eignung ↔ cm ↑ cm

Pflegehinweis

Mindestbestellmenge 1

Technische Eigenschaften

Feuerfestigkeit	M1 / BS 5867 TYPE C / B1 / IMO PASS	
Optischer Index	Lichtreflexion :	71 %
	Lichtabsorption :	29 %
	Lichtdurchlässigkeit :	0 %
Thermaler Index	Sonnenreflexion :	66 %
	Sonnenabsorption :	34 %
	Sonnendurchlässigkeit :	0 %
	UV-Durchlässigkeit :	0 %
	Gtot :	Gt 35 % Fc 60 %
Beständigkeit	Lichteinheit (Einheiten Klasse/8)	4
	Pilling	3-4
	Formstabilität (%)	
	Verzerrung	-0,5
	Querfäden	0
	Martindale (Zyklen)	40000
	Bruchdehnung	
	Verzerrung	19
	Querfäden	22
	Bruchlast (daN)	
	Verzerrung	37
Querfäden	57	

drapilux
By Sotexpro

DRAPILUX GmbH - Hafenstraße 3, 77694 Kehl - Deutschland

Non-contractual photos and colors - Indicative fitting - Fitting may vary depending on supports selected