

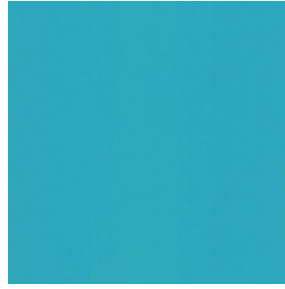
# NOCTURNE



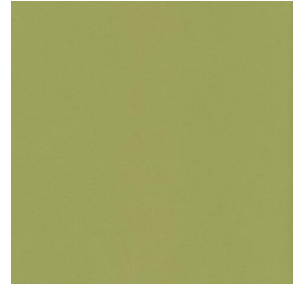
NOCTURNE Océan 91



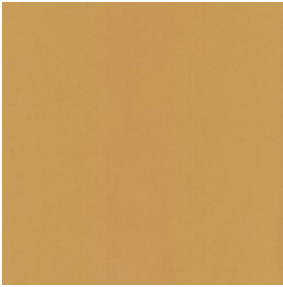
NOCTURNE Arctique 58



NOCTURNE Cyan 90



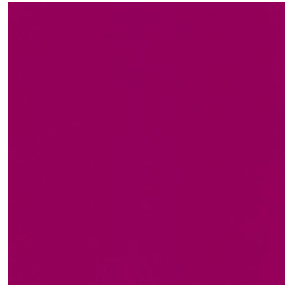
NOCTURNE Mousse 92



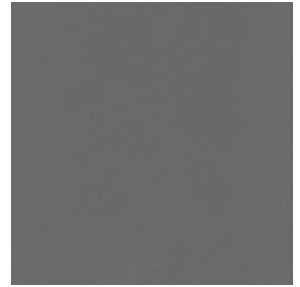
NOCTURNE Abricot 08



NOCTURNE Orange 15



NOCTURNE Fuchsia 33



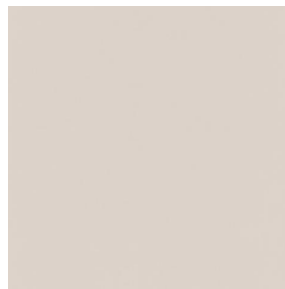
NOCTURNE Sienne 29



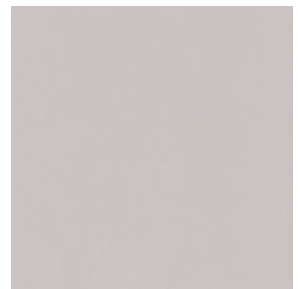
NOCTURNE Perle 96



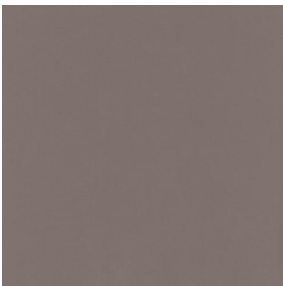
NOCTURNE Gris  03



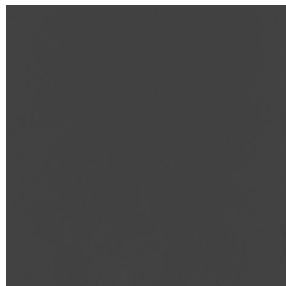
NOCTURNE Cr me 02



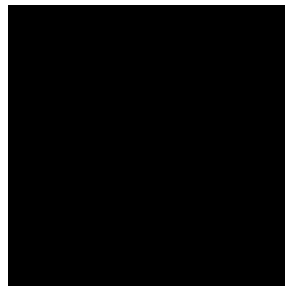
NOCTURNE Mastic 48



NOCTURNE Brun 23



NOCTURNE Taupe 95



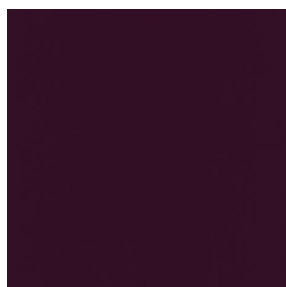
NOCTURNE Noir 10



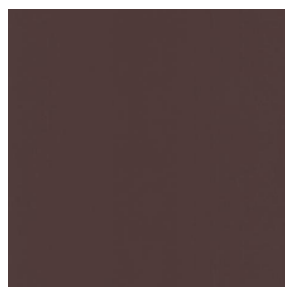
NOCTURNE anthracite  
38



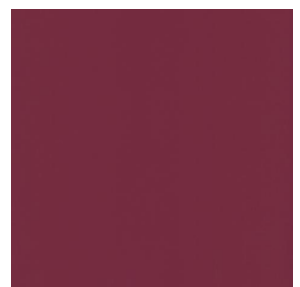
NOCTURNE absinthe  
132



NOCTURNE aubergine  
27



NOCTURNE Chamois  
111



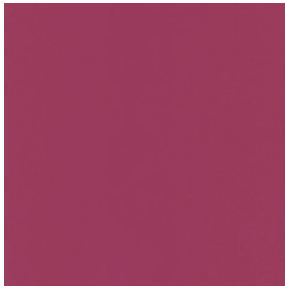
NOCTURNE Bordeaux  
04

**drapilux**  
By Sotexpro

DRAPILUX GmbH - Hafenstra e 3, 77694 Kehl - Deutschland

Non-contractual photos and colors - Indicative fitting - Fitting may vary depending on support selected

# NOCTURNE



NOCTURNE Rubis 59



NOCTURNE Saumon  
143



NOCTURNE Or 94



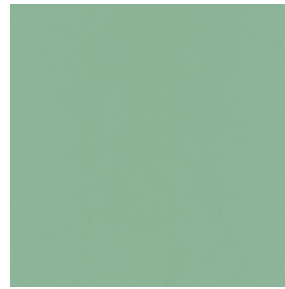
NOCTURNE Terre 107



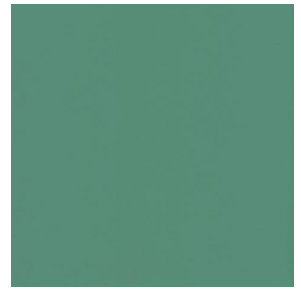
NOCTURNE Amande 75



NOCTURNE  
Bergamotte 121



NOCTURNE Tilleul 103



NOCTURNE Prairie 125



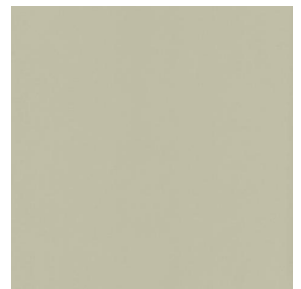
NOCTURNE Sapin 126



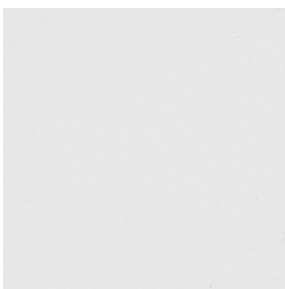
NOCTURNE Beige 63



NOCTURNE Mordoré  
133



NOCTURNE Galet 147



NOCTURNE BPI 00

# NOCTURNE Ecume 82

Dieser Abdunkelungsstoff ist sehr effizient. Er ist in einer breiten Farbpalette erhältlich

## Technische Eigenschaften



Feuerfestigkeit



Wärmeschutz

Applications Falgardinen - Flächenvorhänge - Innenfutter - Vorhänge

Zusammensetzung 100% Polyester mit weiß meliertem Acryl-Trägermaterial

Gewicht 280 g/m<sup>2</sup> Breite 280 cm

Stoffrichtung Rückwärts- oder Standardrichtung Eignung ↔ cm ↑ cm

Pflegehinweis

Mindestbestellmenge 1

## Technische Eigenschaften

Feuerfestigkeit	M1 / BS 5867 TYPE C / B1 / IMO PASS		
Optischer Index	Lichtreflexion :	71 %	
	Lichtabsorption :	29 %	
	Lichtdurchlässigkeit :	0 %	
Thermaler Index	Sonnenreflexion :	66 %	
	Sonnenabsorption :	34 %	
	Sonnendurchlässigkeit :	0 %	
	UV-Durchlässigkeit :	0 %	
	Gtot :	Gt 35 % Fc 60 %	
Beständigkeit	Lichteinheit (Einheiten Klasse/8)	4	
	Pilling	3-4	
	Formstabilität (%)	Verzerrung	-0,5
		Querfäden	0
	Martindale (Zyklen)	40000	
	Bruchdehnung	Verzerrung	19
		Querfäden	22
	Bruchlast (daN)	Verzerrung	37
		Querfäden	57

**drapilux**  
By Sotexpro

DRAPILUX GmbH - Hofenstraße 3, 77694 Kehl - Deutschland

Non-contractual photos and colors - Indicative fitting - Fitting may vary depending on support selected