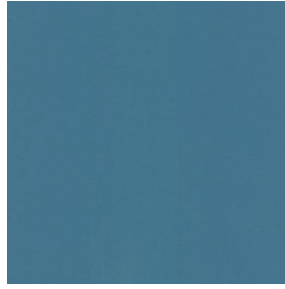


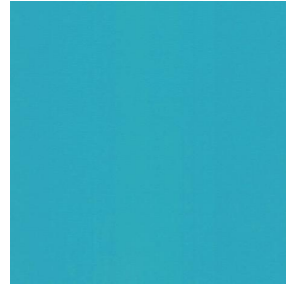
NOCTURNE



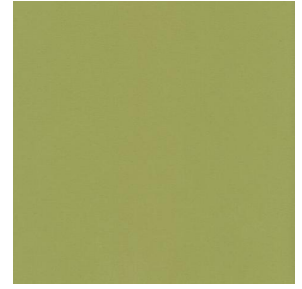
NOCTURNE Océan 91



NOCTURNE Arctique 58



NOCTURNE Cyan 90



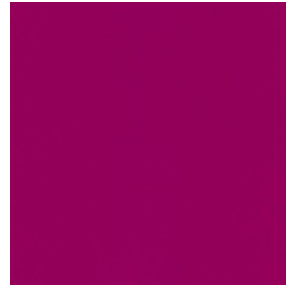
NOCTURNE Mousse 92



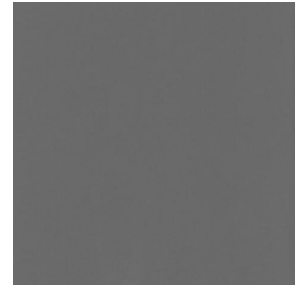
NOCTURNE Abricot 08



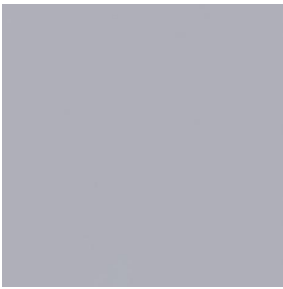
NOCTURNE Orange 15



NOCTURNE Fuchsia 33



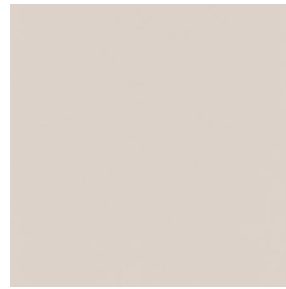
NOCTURNE Sienne 29



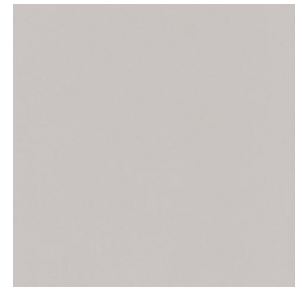
NOCTURNE Perle 96



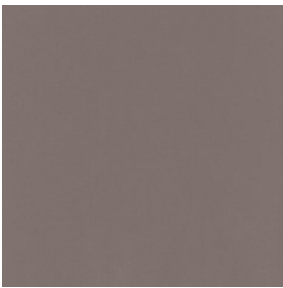
NOCTURNE Grisé 03



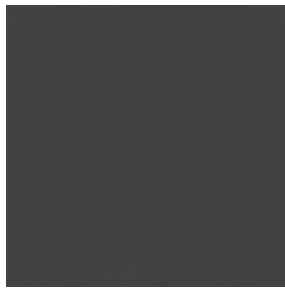
NOCTURNE Crème 02



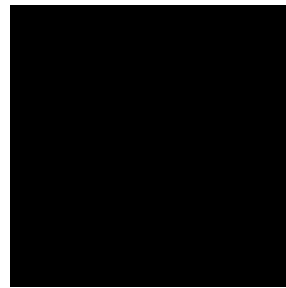
NOCTURNE Mastic 48



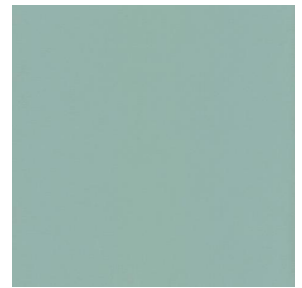
NOCTURNE Brun 23



NOCTURNE Taupe 95



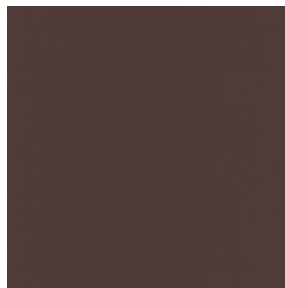
NOCTURNE Noir 10



NOCTURNE absinthe
132



NOCTURNE aubergine
27



NOCTURNE Chamois
111



NOCTURNE Bordeaux
04



NOCTURNE Rubis 59

drapilux
By Sotexpro

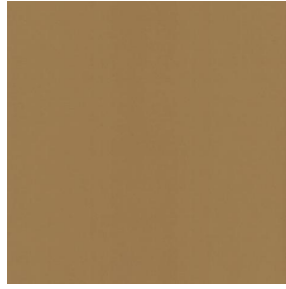
DRAPILUX GmbH - Hafenstraße 3, 77694 Kehl - Deutschland

Non-contractual photos and colors - Indicative fitting - Fitting may vary depending on support selected

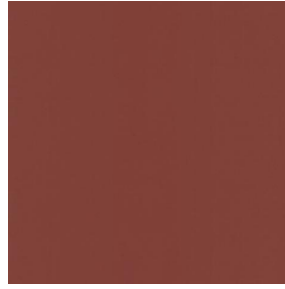
NOCTURNE



NOCTURNE Saumon
143



NOCTURNE Or 94



NOCTURNE Terre 107



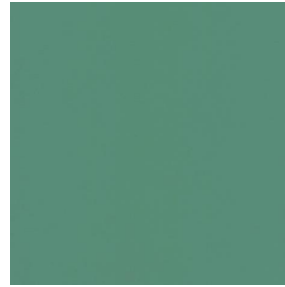
NOCTURNE Amande 75



NOCTURNE
Bergamotte 121



NOCTURNE Tilleul 103



NOCTURNE Prairie 125



NOCTURNE Sapin 126



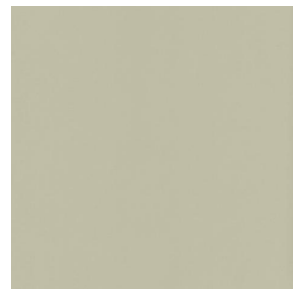
NOCTURNE Ecume 82



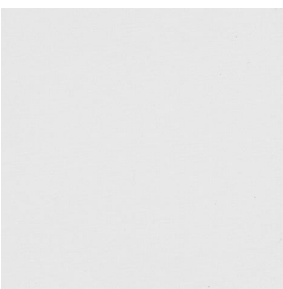
NOCTURNE Beige 63



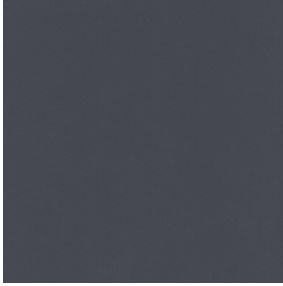
NOCTURNE Mordoré
133



NOCTURNE Galet 147



NOCTURNE BPI 00



NOCTURNE anthracite 38

Dieser einfarbige Stoff blockiert die Lichteinstrahlung sehr effizient und ist in einer breiten Farbpalette erhältlich.

Technische Eigenschaften



Feuerfestigkeit



Wärmeschutz

Applications Faltgardinen - Flächenvorhänge - Innenfutter - Vorhänge

Zusammensetzung 100% Polyester mit weiß meliertem Acryl-Trägermaterial

Gewicht 280 g/m² Breite 280 cm

Stoffrichtung Rückwärts- oder Standardrichtung Eignung ↔ cm ↑ cm

Pflegehinweis     

Mindestbestellmenge 1

Technische Eigenschaften

Feuerfestigkeit	M1 / BS 5867 TYPE C / B1 / IMO PASS	
Optischer Index	Lichtreflexion :	71 %
	Lichtabsorption :	29 %
	Lichtdurchlässigkeit :	0 %
Thermaler Index	Sonnenreflexion :	66 %
	Sonnenabsorption :	34 %
	Sonnendurchlässigkeit :	0 %
	UV-Durchlässigkeit :	0 %
	Gtot :	Gt 35 % Fc 60 %
Beständigkeit	Lichteinheit (Einheiten Klasse/8)	4
	Pilling	3-4
	Formstabilität (%)	
	Verzerrung	-0,5
	Querfäden	0
	Martindale (Zyklen)	40000
	Bruchdehnung	
	Verzerrung	19
	Querfäden	22
	Bruchlast (daN)	
	Verzerrung	37
Querfäden	57	