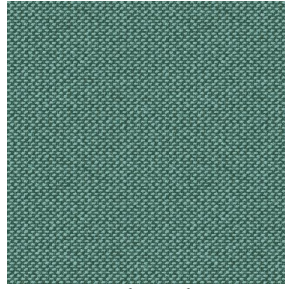


# METIS



METIS Gentiane 16



METIS Absinthe 132



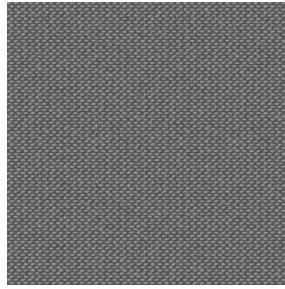
METIS Noir 10



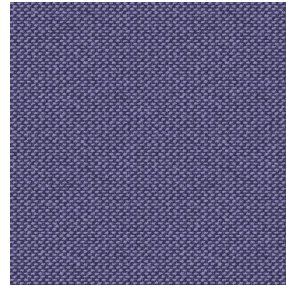
METIS Citrouille 136



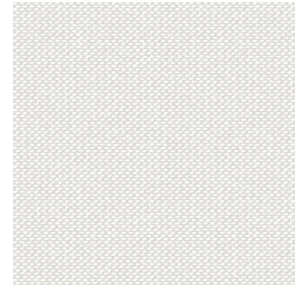
METIS Chanvre 72



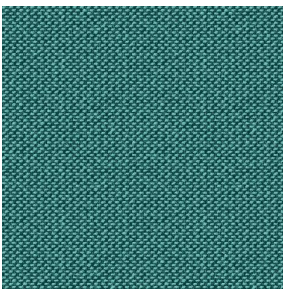
METIS Gris 97



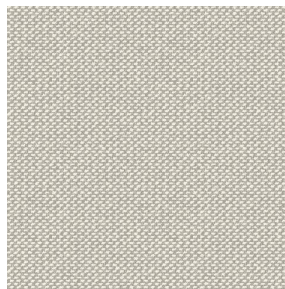
METIS Violine 105



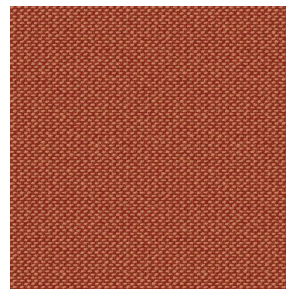
METIS Perle 96



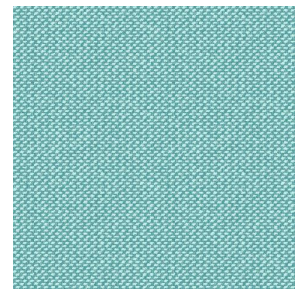
METIS Céladon 135



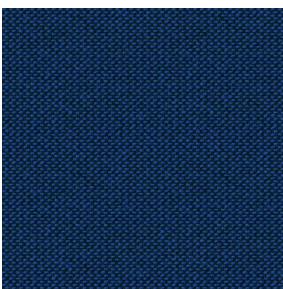
METIS Lin 11



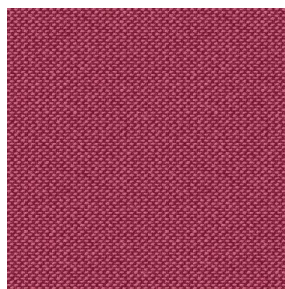
METIS Sienne 29



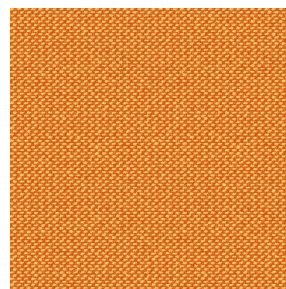
METIS Lagon 110



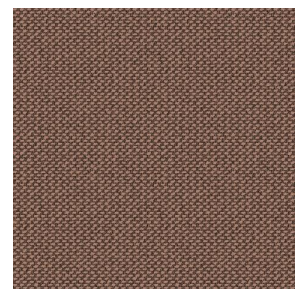
METIS Cobalt 114



METIS Framboise 81



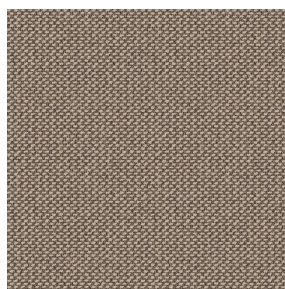
METIS Abricot 08



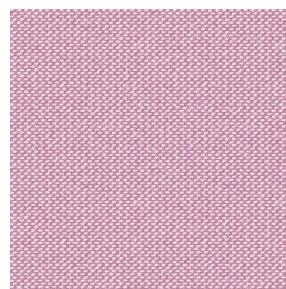
METIS Chamois 111



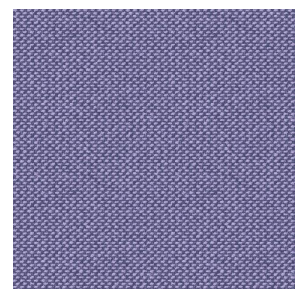
METIS Ivoire 115



METIS Ficelle 09



METIS Rose 129



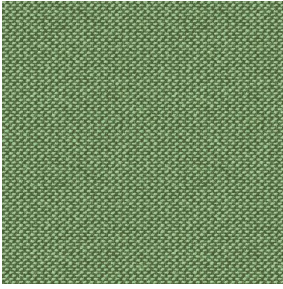
METIS Parme 79

**drapilux**  
By Sotexpro

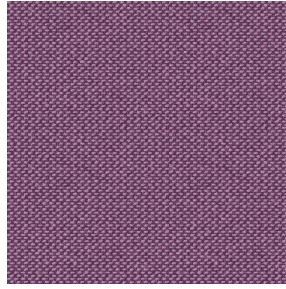
DRAPILUX GmbH - Hofenstraße 3, 77694 Kehl - Deutschland

Non-contractual photos and colors - Indicative fitting - Fitting may vary depending on support selected

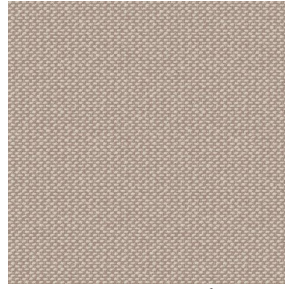
# METIS



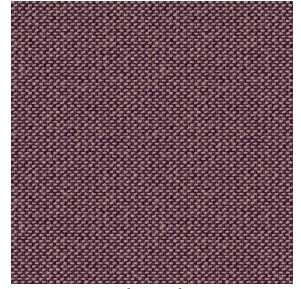
METIS Cactus 36



METIS Hortensia 134



METIS Naturel 26



METIS Chaudron 118

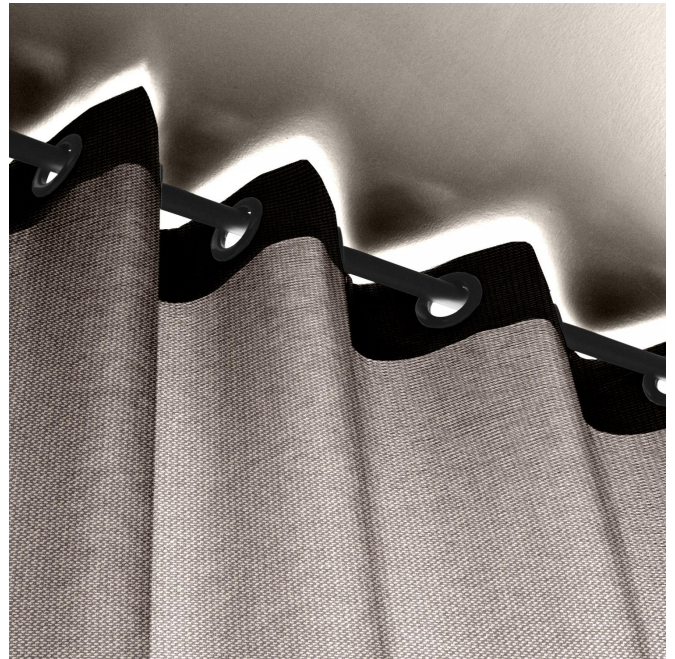
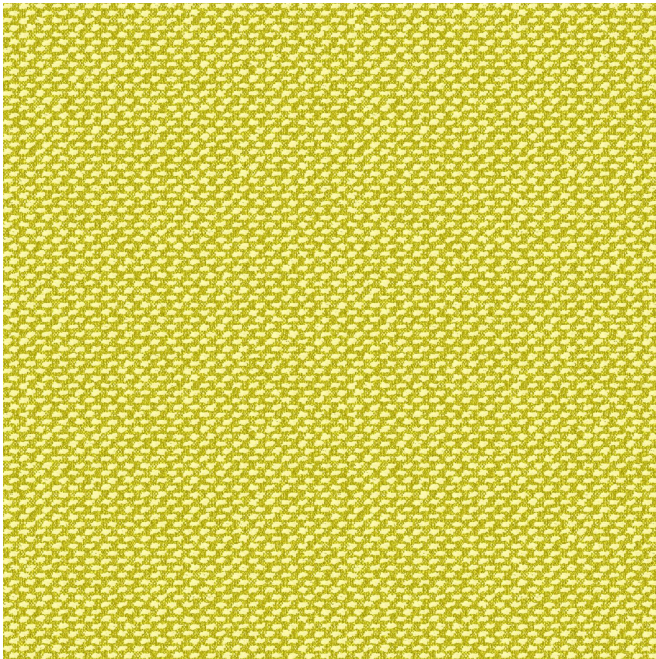
# METIS Bergamote 121

Gruppe **B**

**Eignung:** ↔ 0.0 cm ↓ 0.0 cm "Eignung kann je nach gewähltem Trägergewebe unterschiedlich sein"



Zur Auswahl des Druckträgers und seiner Breite (Breite), wenden Sie sich bitte an Ihren Verkaufsvertreter. Kontaktieren Sie einen Berater



**drapilux**  
By Sotexpro

DRAPILUX GmbH - Hafenstr. 3, 77694 Kehl - Deutschland

Non-contractual photos and colors - Indicative fitting - Fitting may vary depending on support selected