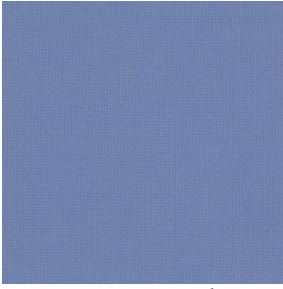
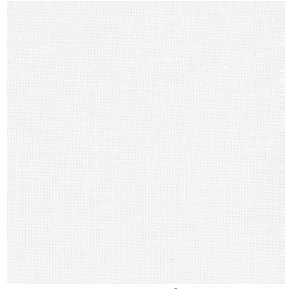


ETAMINE



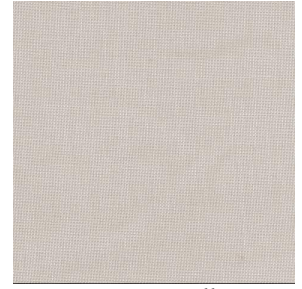
ETAMINE Naval 17



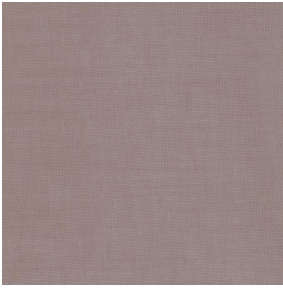
ETAMINE Blanc 01



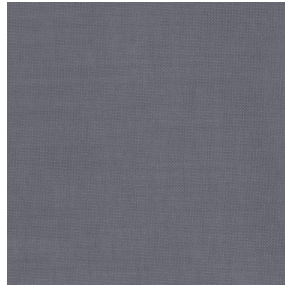
ETAMINE Champagne
02



ETAMINE Ficelle 09



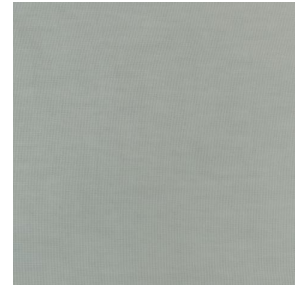
ETAMINE Taupe 95



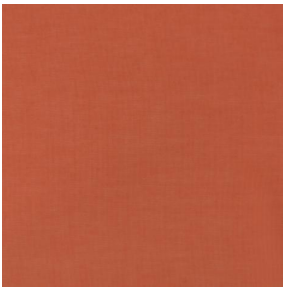
ETAMINE Anthracite 38



ETAMINE Noir 12



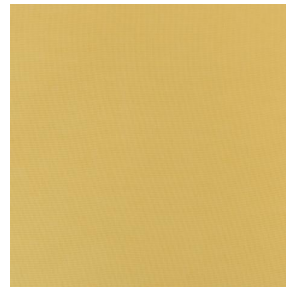
ETAMINE Ardoise 08



ETAMINE Safran 49



ETAMINE Olive 61



ETAMINE Agrume 69



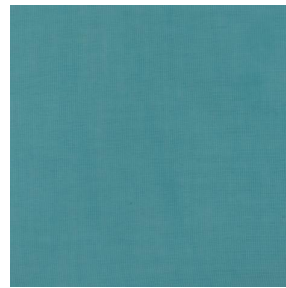
ETAMINE Chocolat 70



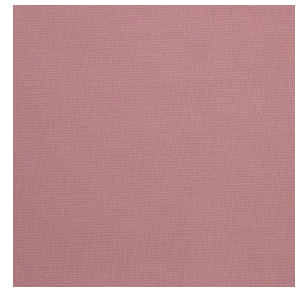
ETAMINE Beige 90



ETAMINE Indigo 144



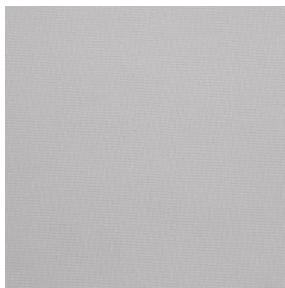
ETAMINE Pacifique 54



ETAMINE Hortensia 134



ETAMINE Cactus 36

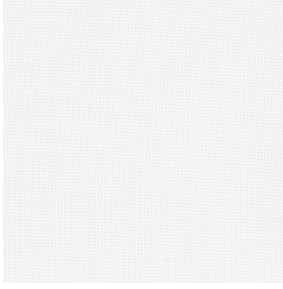


ETAMINE Perle 96

drapilux
By Sotexpro

DRAPILUX GmbH - Hafenstraße 3, 77694 Kehl - Deutschland

Non-contractual photos and colors - Indicative fitting - Fitting may vary depending on support selected



ETAMINE BPI 00

Hochwertige, leichte und luftige durchscheinende Vorhänge.

Technische Eigenschaften



Feuerfestigkeit Transparent

Applications Falgardinen - Flächenvorhänge - Vorhänge

Zusammensetzung 100% feuerfester Polyester

Gewicht 95 g/m² Breite 290 cm

Stoffrichtung Rückwärtsrichtung Eignung ↔ cm ↓ cm

Pflegehinweis     

Beschriftungen France Terre Textile (R016)

Certifications OEKO-TEX STANDARD 100 (CQ 1006/1)

Mindestbestellmenge 25

Technische Eigenschaften

Feuerfestigkeit	M1 / B1 / IMO PASS / UNI 8456 / 9174 Classe Uno	
Transparenter Schleier	Yes	
Beständigkeit	Formstabilität (%)	
	Verzerrung	0
	Querfäden	0
	Bruchdehnung	
	Verzerrung	46
	Querfäden	13
	Bruchlast (daN)	
	Verzerrung	41
Querfäden	40	