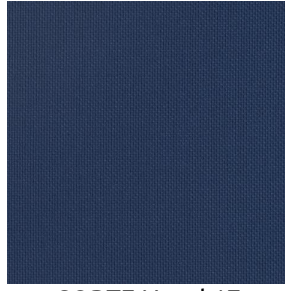


CORTE



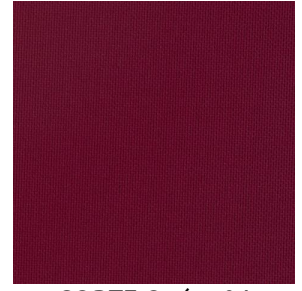
CORTE Eucalyptus 117



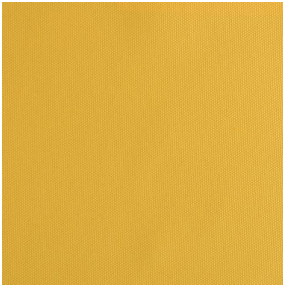
CORTE Naval 17



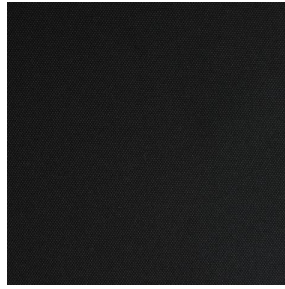
CORTE Orgeat 127



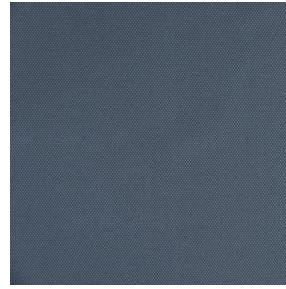
CORTE Opéra 04



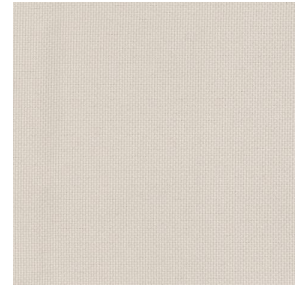
CORTE Miel 07



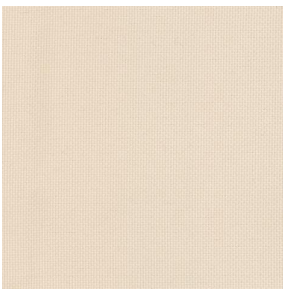
CORTE Noir 10



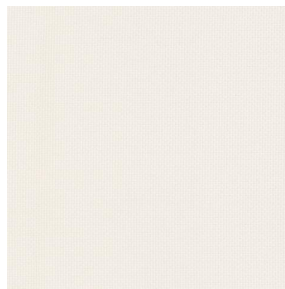
CORTE Anthracite 38



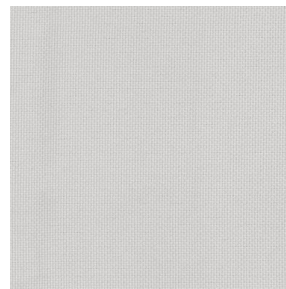
CORTE Mastic 48



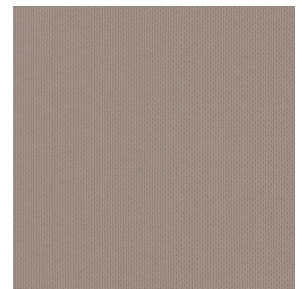
CORTE Ivoire 02



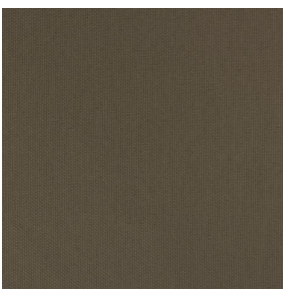
CORTE Blanc 01



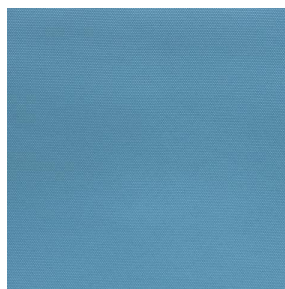
CORTE Souris 31



CORTE Taupe 95



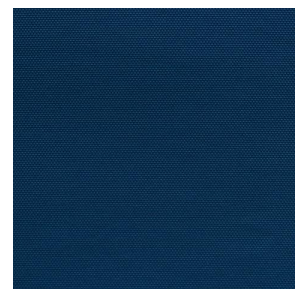
CORTE Moka 13



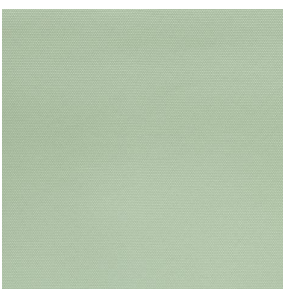
CORTE Céladon 135



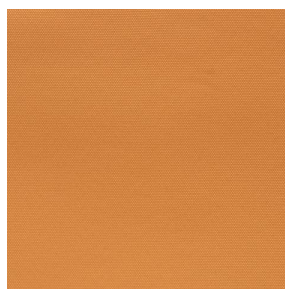
CORTE Faïence 149



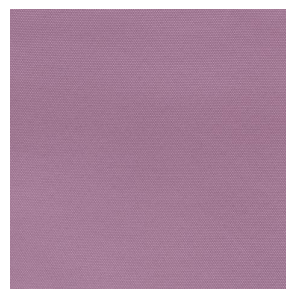
CORTE Indigo 144



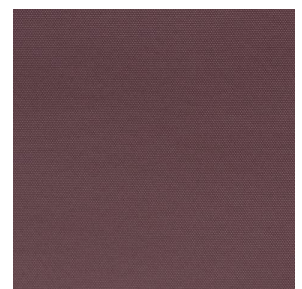
CORTE Absinthe 132



CORTE Ocre 03



CORTE Hortensia 134

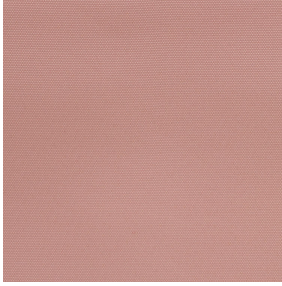


CORTE Cacao 168

drapilux
By Sotexpro

DRAPILUX GmbH - Hofenstraße 3, 77694 Kehl - Deutschland

Non-contractual photos and colors - Indicative fitting - Fitting may vary depending on support selected



CORTE Saumon 143

Dieser einfarbige, Licht filternde Stoff ist in mehreren Farben erhältlich.

Technische Eigenschaften



Feuerfestigkeit



Wärmeschutz






Akustik

Applications Vorhänge - Kissen - Dekorative Rahmen - Falgardinen -
Flächenvorhänge - Bettwäsche - Valence-Vorhänge - Bestuhlung -
Bettläufer

Zusammensetzung 100% feuerfester Polyester

Gewicht 230 g/m² **Breite** 140 cm / 280 cm

Stoffrichtung Rückwärts- oder Standardrichtung **Eignung** ↔ cm ↑ cm

Pflegehinweis    

Beschriftungen France Terre Textile (R016)

Certifications OEKO-TEX STANDARD 100 (CQ 1006/1)

Mindestbestellmenge 1

Technische Eigenschaften

Feuerfestigkeit

M1 / BS 5867 TYPE C / B1 / IMO PASS / UNI 8456 / 9174 Classe Uno

Akustik

Schalldämpfungskoeffizient (NRC) : **0.90**

Gewichteter Schallabsorptionskoeffizient (a_w) : **0.85**

Akustische Absorptionsklasse (a_w) : **B**

Optischer Index

Lichtreflexion : **36 %**

Lichtabsorption : **58 %**

Lichtdurchlässigkeit : **6 %**

Thermaler Index

Sonnenreflexion : **50 %**

Sonnenabsorption : **33 %**

Sonnendurchlässigkeit : **17 %**

UV-Durchlässigkeit : **0 %**

G_{tot} : **G_t 41 % F_c 69 %**

Beständigkeit

Lichtehtheit (Einheiten Klasse/8) **5**

Pilling **4**

Formstabilität (%)

Verzerrung **-2**

Querfäden **-0.5**

Martindale (Zyklen) **25000**

Bruchdehnung

Verzerrung **34**

Querfäden **28**

Bruchlast (daN)

Verzerrung **130**

Querfäden **90**

drapilux
By Sotexpro

DRAPILUX GmbH - Hafenstraße 3, 77694 Kehl - Deutschland

Non-contractual photos and colors - Indicative fitting - Fitting may vary depending on supports selected