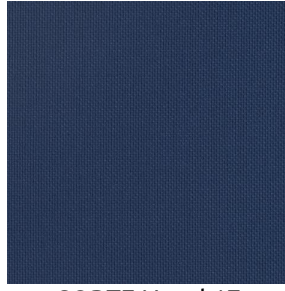


CORTE



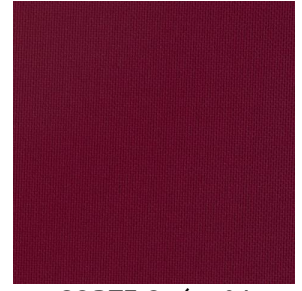
CORTE Eucalyptus 117



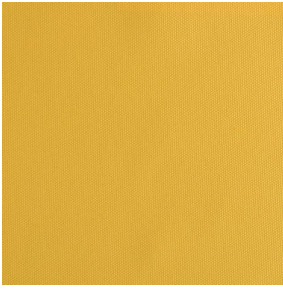
CORTE Naval 17



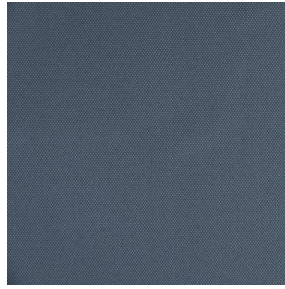
CORTE Orgeat 127



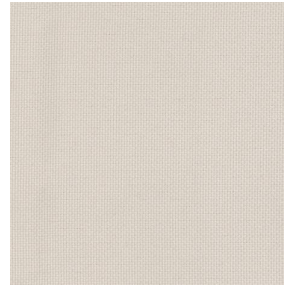
CORTE Opéra 04



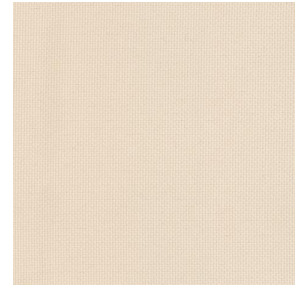
CORTE Miel 07



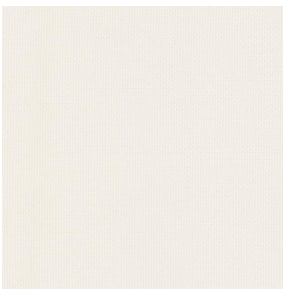
CORTE Anthracite 38



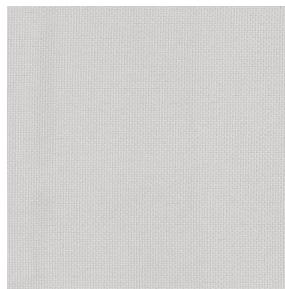
CORTE Mastic 48



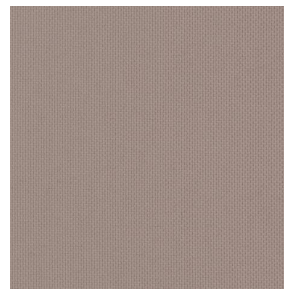
CORTE Ivoire 02



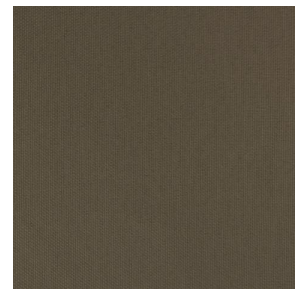
CORTE Blanc 01



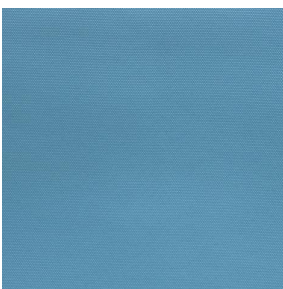
CORTE Souris 31



CORTE Taupe 95



CORTE Moka 13



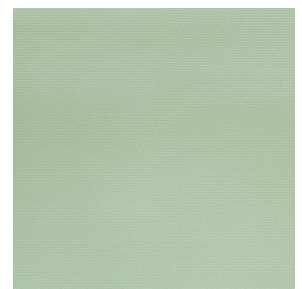
CORTE Céladon 135



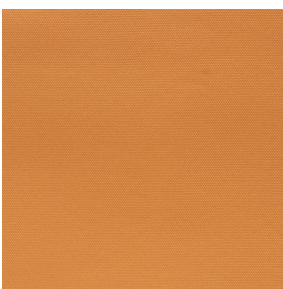
CORTE Faïence 149



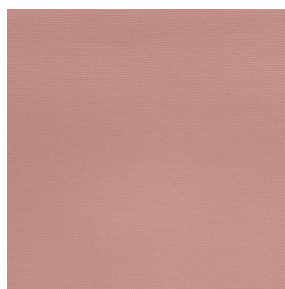
CORTE Indigo 144



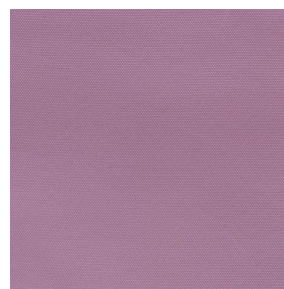
CORTE Absinthe 132



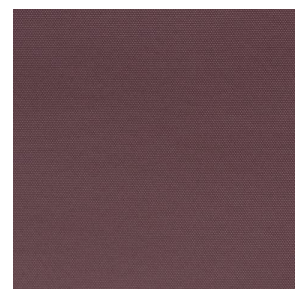
CORTE Ocre 03



CORTE Saumon 143



CORTE Hortensia 134

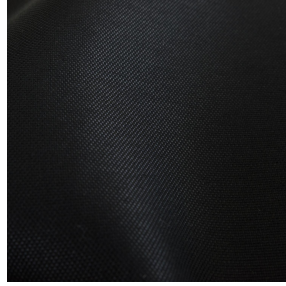
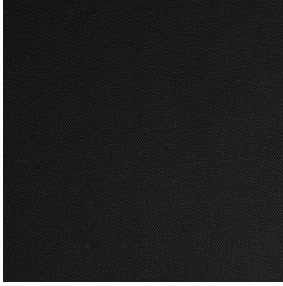


CORTE Cacao 168

drapilux
By Sotexpro

DRAPILUX GmbH - Hofenstraße 3, 77694 Kehl - Deutschland

Non-contractual photos and colors - Indicative fitting - Fitting may vary depending on support selected



CORTE Noir 10

Dieser einfarbige, Licht filternde Stoff ist in mehreren Farben erhältlich.

Technische Eigenschaften



Feuerfestigkeit



Wärmeschutz



Akustik

Applications **Faltgardinen - Flächenvorhänge - Bettwäsche - Valence-Vorhänge - Bestuhlung - Bettläufer - Vorhänge - Kissen - Dekorative Rahmen**

Zusammensetzung **100% feuerfester Polyester**

Gewicht **230 g/m²** Breite **140 cm / 280 cm**

Stoffrichtung **Rückwärts- oder Standardrichtung** Eignung **↔ cm ↓ cm**

Pflegehinweis

Beschriftungen **France Terre Textile (R016)**

Certifications **OEKO-TEX STANDARD 100 (CQ 1006/1)**

Mindestbestellmenge **1**

Technische Eigenschaften

| | | |
|-----------------|--|------------------------|
| Feuerfestigkeit | M1 / BS 5867 TYPE C / B1 / IMO PASS / UNI 8456 / 9174 Classe Uno | |
| Akustik | Schalldämpfungskoeffizient (NRC) : | 0.90 |
| | Gewichteter Schallabsorptionskoeffizient (a _w) : | 0.85 |
| | Akustische Absorptionsklasse (a _w) : | B |
| Optischer Index | Lichtreflexion : | 3 % |
| | Lichtabsorption : | 97 % |
| | Lichtdurchlässigkeit : | 0 % |
| Thermaler Index | Sonnenreflexion : | 32 % |
| | Sonnenabsorption : | 56 % |
| | Sonnendurchlässigkeit : | 12 % |
| | UV-Durchlässigkeit : | 0 % |
| | Gtot : | Gt 47 % Fc 79 % |
| Beständigkeit | Lichtechtheit (Einheiten Klasse/8) | 5 |
| | Pilling | 4 |
| | Formstabilität (%) | |
| | Verzerrung | -2 |
| | Querfäden | -0.5 |
| | Martindale (Zyklen) | 25000 |
| | Bruchdehnung | |
| | Verzerrung | 34 |
| | Querfäden | 28 |
| | Bruchlast (daN) | |
| | Verzerrung | 130 |
| | Querfäden | 90 |



DRAPILUX GmbH - Hofenstraße 3, 77694 Kehl - Deutschland

Non-contractual photos and colors - Indicative fitting - Fitting may vary depending on supports selected