

# COLLIOURE



COLLIOURE Olive 61



COLLIOURE Agrume 69



COLLIOURE Miel 17



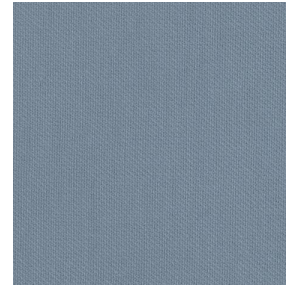
COLLIOURE Mandarine  
93



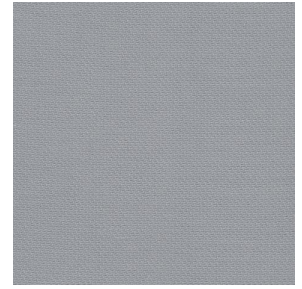
COLLIOURE Océan 91



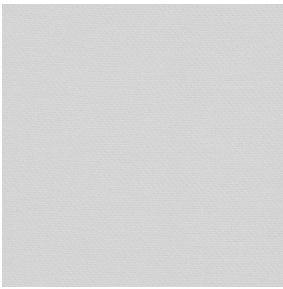
COLLIOURE Pervenche  
13



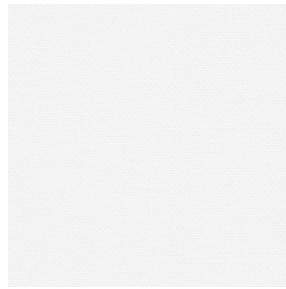
COLLIOURE Ardoise 08



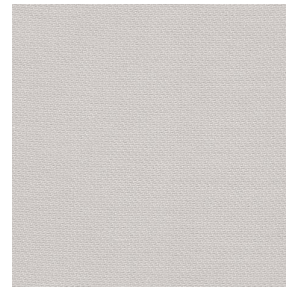
COLLIOURE Glacier 43



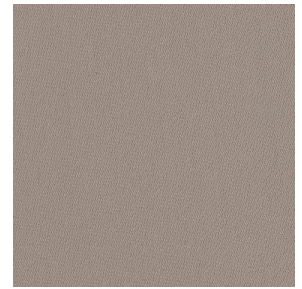
COLLIOURE Souris 31



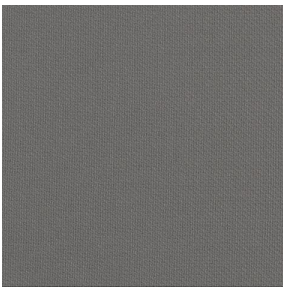
COLLIOURE Blanc 01



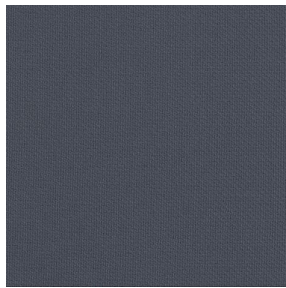
COLLIOURE Ivoire 02



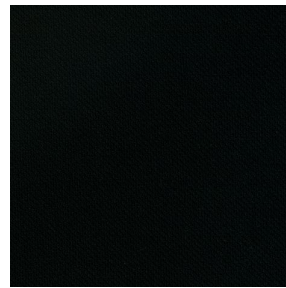
COLLIOURE Naturel 26



COLLIOURE Brun 23



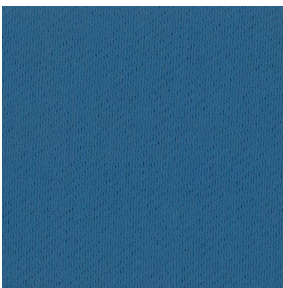
COLLIOURE Titanium 98



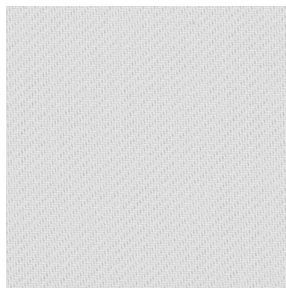
COLLIOURE Noir 12



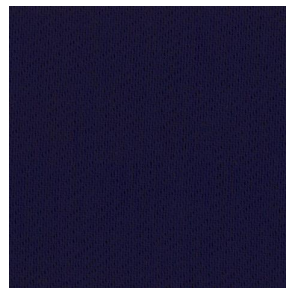
COLLIOURE eucalyptus  
117



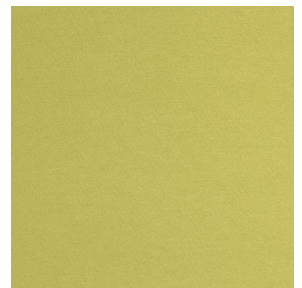
COLLIOURE navy 120



COLLIOURE lin 11



COLLIOURE marine 25



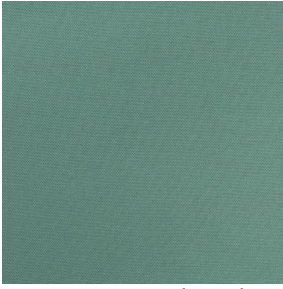
COLLIOURE  
Bergamotte 121

**drapilux**  
By Sotexpro

DRAPILUX GmbH - Hafenstraße 3, 77694 Kehl - Deutschland

Non-contractual photos and colors - Indicative fitting - Fitting may vary depending on support selected

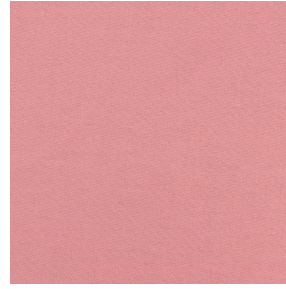
# COLLIOURE



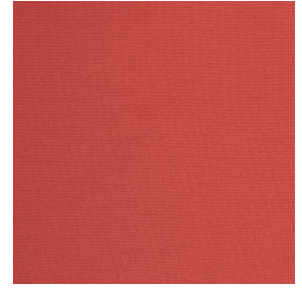
COLLIOURE Absinthe  
132



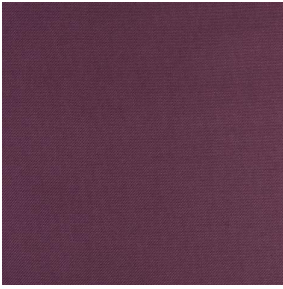
COLLIOURE Arctique 58



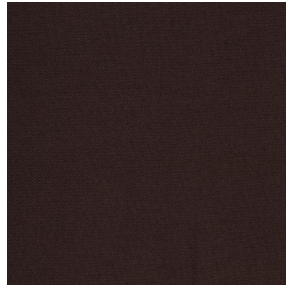
COLLIOURE Saumon  
143



COLLIOURE Tomette 60



COLLIOURE Aubergine  
27



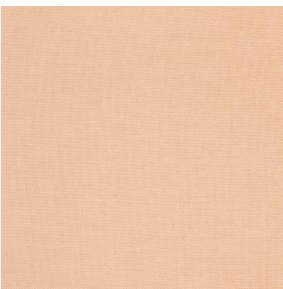
COLLIOURE Cacao 168



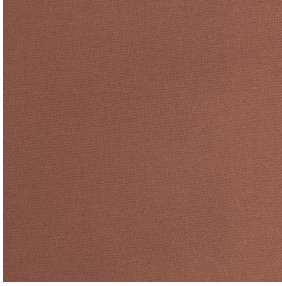
COLLIOURE Chataigne  
55



COLLIOURE Chamois  
111



COLLIOURE Pêche 52



# COLLIOURE Terre 107

Dieser einfarbige Körperstoff ist in einer Palette mehrerer Farben verfügbar.

## Technische Eigenschaften



Feuerfestigkeit



Wärmeschutz

Applications **Faltgardinen - Flächenvorhänge - Valence-Vorhänge - Vorhänge - Kissen - Dekorative Rahmen**

Zusammensetzung **100% feuerfester Polyester**

Gewicht **270 g/m<sup>2</sup>** Breite **140 cm / 280 cm**

Stoffrichtung **Rückwärts- oder Standardrichtung** Eignung **↔ cm ↓ cm**

Pflegehinweis

Beschriftungen **France Terre Textile (R016)**

Certifications **OEKO-TEX STANDARD 100 (CQ 1006/1)**

Mindestbestellmenge **1**

## Technische Eigenschaften

Feuerfestigkeit

M1 / EN13773 : 2003 Class 1 / B1 / IMO PASS / UNI 8456 / 9174  
Classe Uno

Optischer Index

Lichtreflexion : **33 %**

Lichtabsorption : **64 %**

Lichtdurchlässigkeit : **3 %**

Thermaler Index

Sonnenreflexion : **50 %**

Sonnenabsorption : **36 %**

Sonnendurchlässigkeit : **14 %**

UV-Durchlässigkeit : **1 %**

Gtot : **Gt 41 % Fc 69 %**

Beständigkeit

Lichtehtheit (Einheiten Klasse/8) **5**

Formstabilität (%)

Verzerrung **-3**

Querfäden **-0.5**

Bruchdehnung

Verzerrung **26**

Querfäden **28**

Bruchlast (daN)

Verzerrung **100**

Querfäden **160**

**drapilux**  
By Sotexpro

DRAPILUX GmbH - Hafenstraße 3, 77694 Kehl - Deutschland

Non-contractual photos and colors - Indicative fitting - Fitting may vary depending on supports selected