

COLLIOURE



COLLIOURE Olive 61



COLLIOURE Agrume 69



COLLIOURE Miel 17



COLLIOURE Mandarine
93



COLLIOURE Océan 91



COLLIOURE Pervenche
13



COLLIOURE Ardoise 08



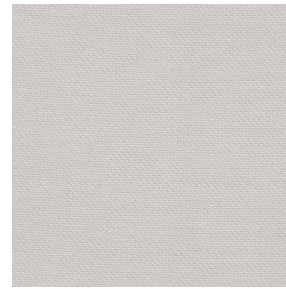
COLLIOURE Glacier 43



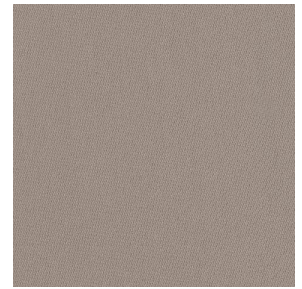
COLLIOURE Souris 31



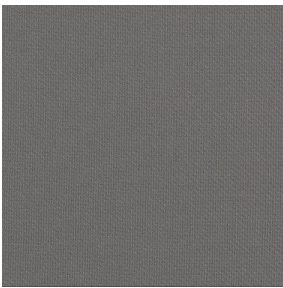
COLLIOURE Blanc 01



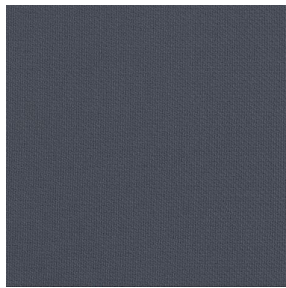
COLLIOURE Ivoire 02



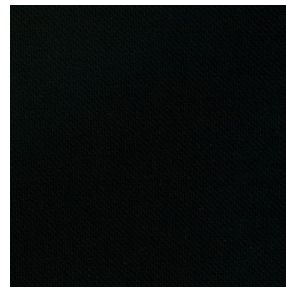
COLLIOURE Naturel 26



COLLIOURE Brun 23



COLLIOURE Titanium 98



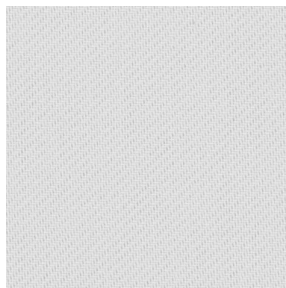
COLLIOURE Noir 12



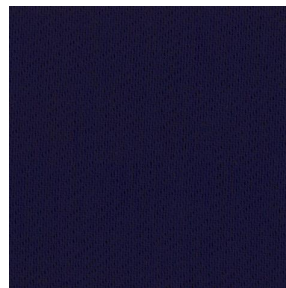
COLLIOURE eucalyptus
117



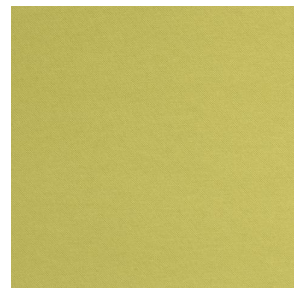
COLLIOURE navy 120



COLLIOURE lin 11



COLLIOURE marine 25



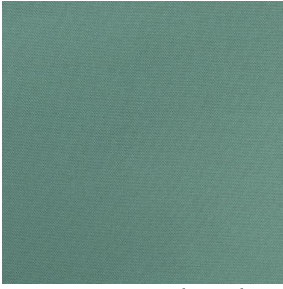
COLLIOURE
Bergamotte 121

drapilux
By Sotexpro

DRAPILUX GmbH - Hafenstraße 3, 77694 Kehl - Deutschland

Non-contractual photos and colors - Indicative fitting - Fitting may vary depending on support selected

COLLIOURE



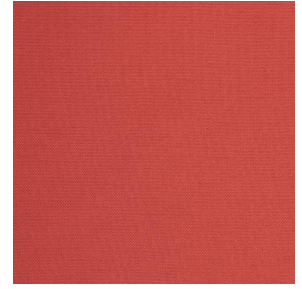
COLLIOURE Absinthe
132



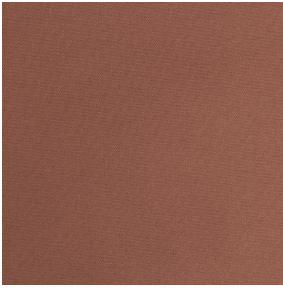
COLLIOURE Arctique 58



COLLIOURE Saumon
143



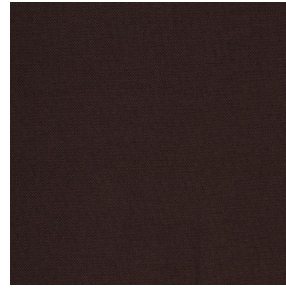
COLLIOURE Tomette 60



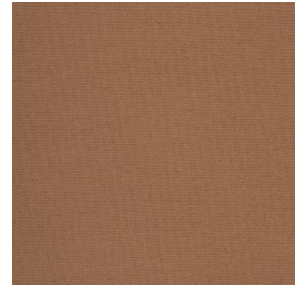
COLLIOURE Terre 107



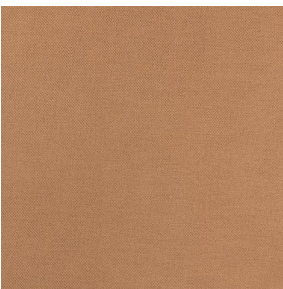
COLLIOURE Aubergine
27



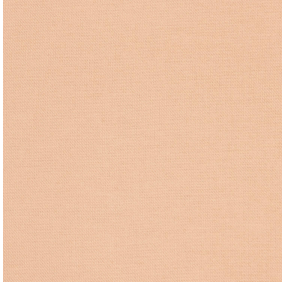
COLLIOURE Cacao 168



COLLIOURE Chataigne
55



COLLIOURE Chamois
111



COLLIOURE Pêche 52

Dieser einfarbige Körperstoff ist in einer Palette mehrerer Farben verfügbar.

Technische Eigenschaften



Feuerfestigkeit



Wärmeschutz

Applications **Faltgardinen - Flächenvorhänge - Valence-Vorhänge - Vorhänge - Kissen - Dekorative Rahmen**

Zusammensetzung **100% feuerfester Polyester**

Gewicht **270 g/m²** Breite **140 cm / 280 cm**

Stoffrichtung **Rückwärts- oder Standardrichtung** Eignung **↔ cm ↓ cm**

Pflegehinweis

Beschriftungen **France Terre Textile (R016)**

Certifications **OEKO-TEX STANDARD 100 (CQ 1006/1)**

Mindestbestellmenge **1**

Technische Eigenschaften

Feuerfestigkeit

M1 / EN13773 : 2003 Class 1 / B1 / IMO PASS / UNI 8456 / 9174
Classe Uno

Optischer Index

Lichtreflexion :	64 %
Lichtabsorption :	19 %
Lichtdurchlässigkeit :	17 %

Thermaler Index

Sonnenreflexion :	64 %
Sonnenabsorption :	17 %
Sonnendurchlässigkeit :	19 %
UV-Durchlässigkeit :	3 %
Gtot :	Gt 36 % Fc 61 %

Beständigkeit

Lichtehtheit (Einheiten Klasse/8)	6
Formstabilität (%)	
Verzerrung	-3
Querfäden	-0.5
Bruchdehnung	
Verzerrung	26
Querfäden	28
Bruchlast (daN)	
Verzerrung	100
Querfäden	160

drapilux
By Sotexpro

DRAPILUX GmbH - Hafenstraße 3, 77694 Kehl - Deutschland

Non-contractual photos and colors - Indicative fitting - Fitting may vary depending on supports selected