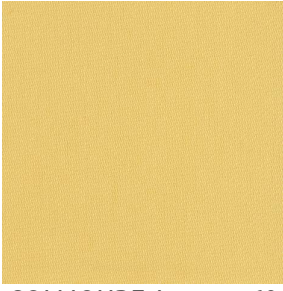
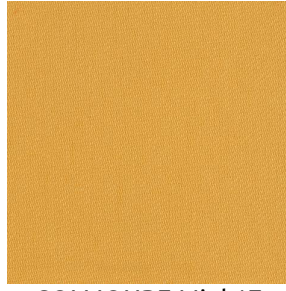


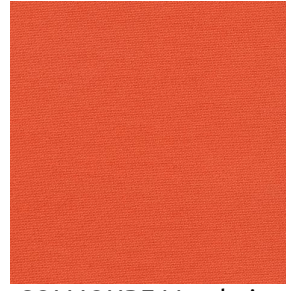
COLLIOURE



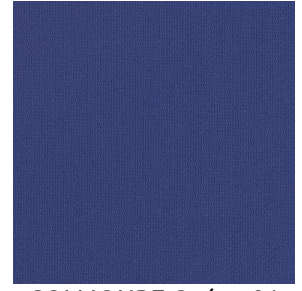
COLLIOURE Agrume 69



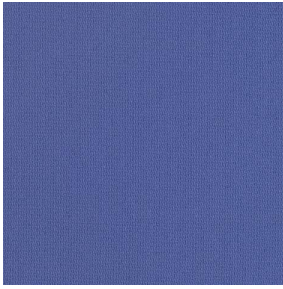
COLLIOURE Miel 17



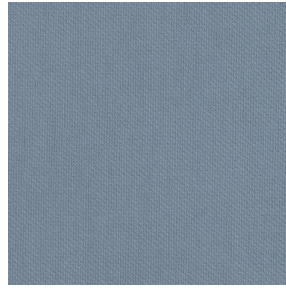
COLLIOURE Mandarine
93



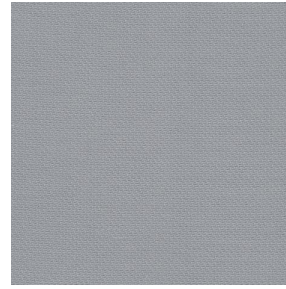
COLLIOURE Océan 91



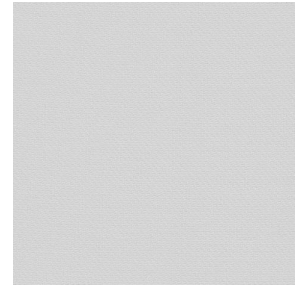
COLLIOURE Pervenche
13



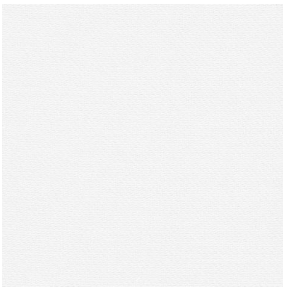
COLLIOURE Ardoise 08



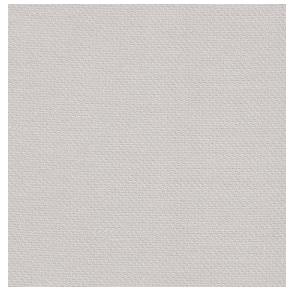
COLLIOURE Glacier 43



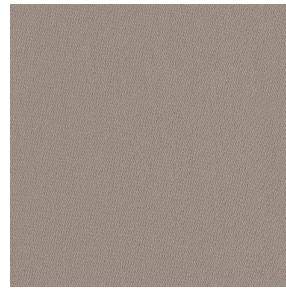
COLLIOURE Souris 31



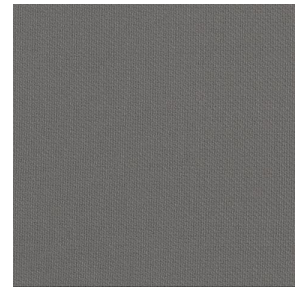
COLLIOURE Blanc 01



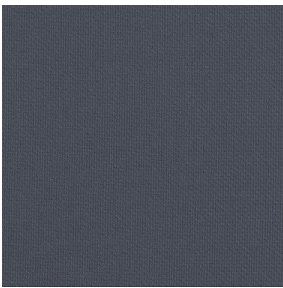
COLLIOURE Ivoire 02



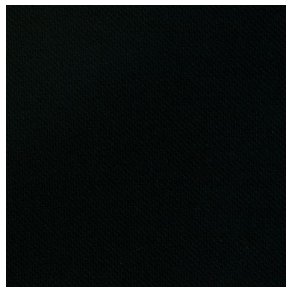
COLLIOURE Naturel 26



COLLIOURE Brun 23



COLLIOURE Titanium 98



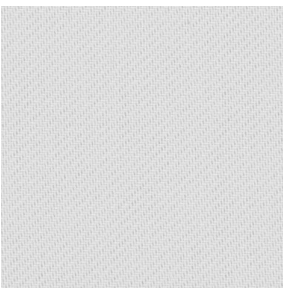
COLLIOURE Noir 12



COLLIOURE eucalyptus
117



COLLIOURE navy 120



COLLIOURE lin 11



COLLIOURE marine 25



COLLIOURE
Bergamotte 121



COLLIOURE Absinthe
132

drapilux
By Sotexpro

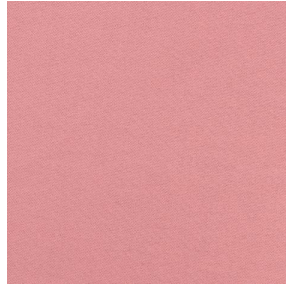
DRAPILUX GmbH - Hafenstraße 3, 77694 Kehl - Deutschland

Non-contractual photos and colors - Indicative fitting - Fitting may vary depending on support selected

COLLIOURE



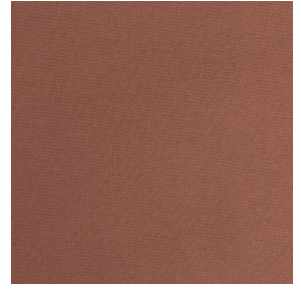
COLLIOURE Arctique 58



COLLIOURE Saumon
143



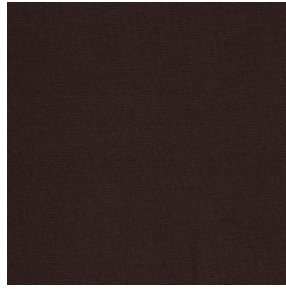
COLLIOURE Tomette 60



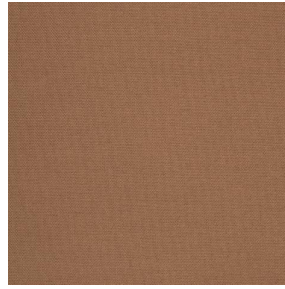
COLLIOURE Terre 107



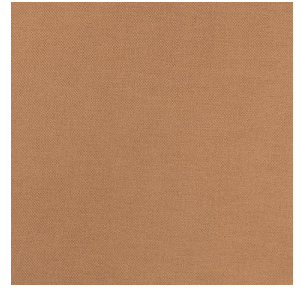
COLLIOURE Aubergine
27



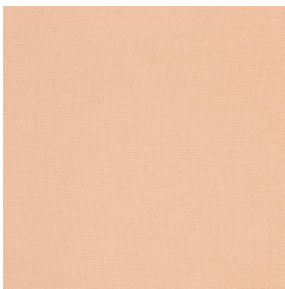
COLLIOURE Cacao 168



COLLIOURE Chataigne
55



COLLIOURE Chamois
111

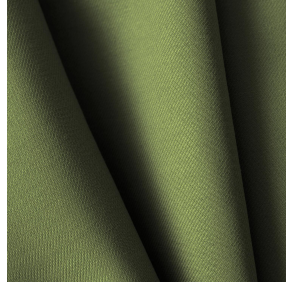


COLLIOURE Pêche 52

drapilux
By Sotexpro

DRAPILUX GmbH - Hafenstraße 3, 77694 Kehl - Deutschland

Non-contractual photos and colors - Indicative fitting - Fitting may vary depending on support selected



COLLIOURE Olive 61

Dieser einfarbige Körperstoff ist in einer Palette mehrerer Farben verfügbar.

Technische Eigenschaften



Feuerfestigkeit



Wärmeschutz

Applications Faltgardinen - Flächenvorhänge - Valence-Vorhänge - Vorhänge - Kissen - Dekorative Rahmen

Zusammensetzung 100% feuerfester Polyester

Gewicht 270 g/m² Breite 140 cm / 280 cm

Stoffrichtung Rückwärts- oder Standardrichtung Eignung ↔ cm ↓ cm

Pflegehinweis

Beschriftungen France Terre Textile (R016)

Certifications OEKO-TEX STANDARD 100 (CQ 1006/1)

Mindestbestellmenge 1



Technische Eigenschaften

Feuerfestigkeit

M1 / EN13773 : 2003 Class 1 / B1 / IMO PASS / UNI 8456 / 9174 Classe Uno

Optischer Index

Lichtreflexion : 33 %

Lichtabsorption : 64 %

Lichtdurchlässigkeit : 3 %

Thermaler Index

Sonnenreflexion : 50 %

Sonnenabsorption : 36 %

Sonnendurchlässigkeit : 14 %

UV-Durchlässigkeit : 1 %

Gtot : Gt 41 % Fc 69 %

Beständigkeit

Lichtehtheit (Einheiten Klasse/8) 5

Formstabilität (%)

Verzerrung -3

Querfäden -0.5

Bruchdehnung

Verzerrung 26

Querfäden 28

Bruchlast (daN)

Verzerrung 100

Querfäden 160

drapilux
By Sotexpro

DRAPILUX GmbH - Hafenstraße 3, 77694 Kehl - Deutschland

Non-contractual photos and colors - Indicative fitting - Fitting may vary depending on support selected