

# COLLIOURE



COLLIOURE Olive 61



COLLIOURE Agrume 69



COLLIOURE Miel 17



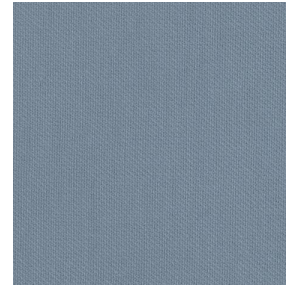
COLLIOURE Mandarine  
93



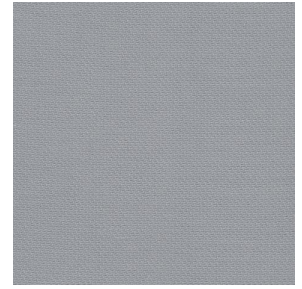
COLLIOURE Océan 91



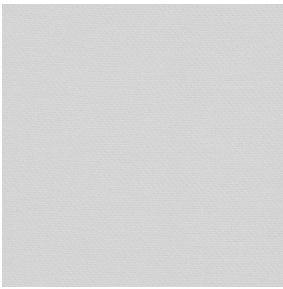
COLLIOURE Pervenche  
13



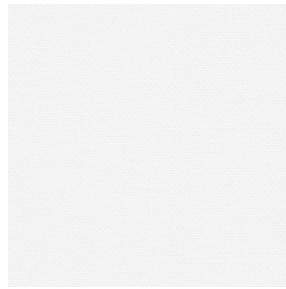
COLLIOURE Ardoise 08



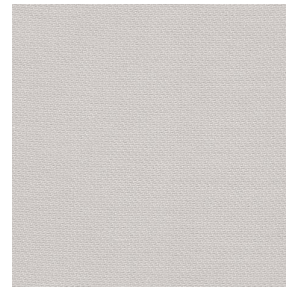
COLLIOURE Glacier 43



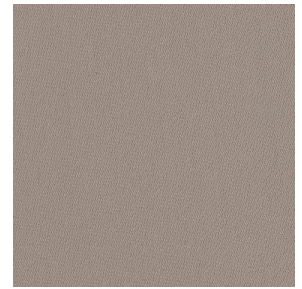
COLLIOURE Souris 31



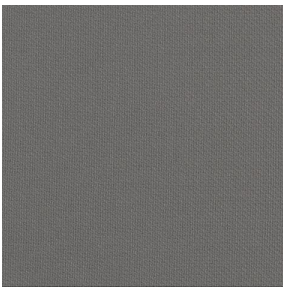
COLLIOURE Blanc 01



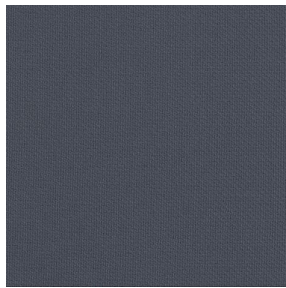
COLLIOURE Ivoire 02



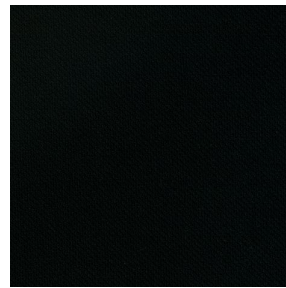
COLLIOURE Naturel 26



COLLIOURE Brun 23



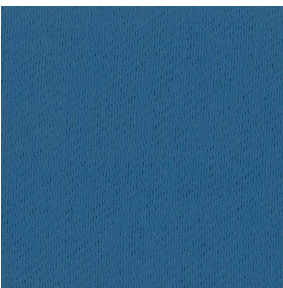
COLLIOURE Titanium 98



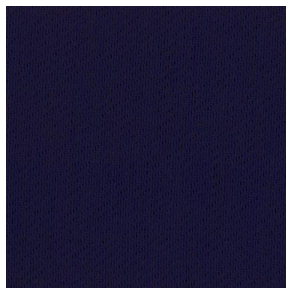
COLLIOURE Noir 12



COLLIOURE eucalyptus  
117



COLLIOURE navy 120



COLLIOURE marine 25



COLLIOURE  
Bergamotte 121



COLLIOURE Absinthe  
132

**drapilux**  
By Sotexpro

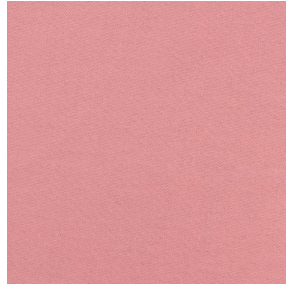
DRAPILUX GmbH - Hafenstraße 3, 77694 Kehl - Deutschland

Non-contractual photos and colors - Indicative fitting - Fitting may vary depending on support selected

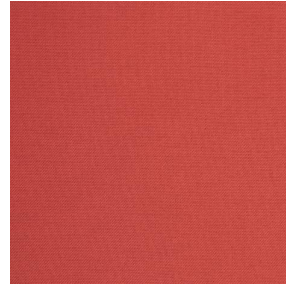
# COLLIOURE



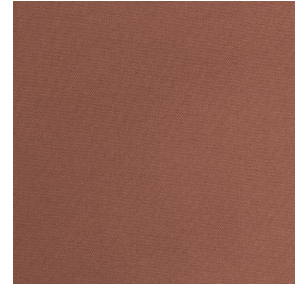
COLLIOURE Arctique 58



COLLIOURE Saumon  
143



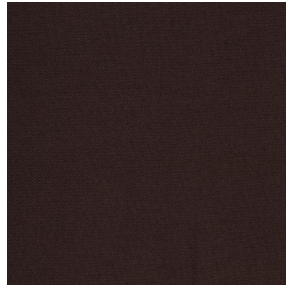
COLLIOURE Tomette 60



COLLIOURE Terre 107



COLLIOURE Aubergine  
27



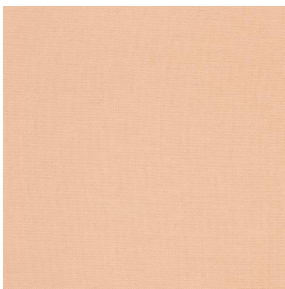
COLLIOURE Cacao 168



COLLIOURE Chataigne  
55



COLLIOURE Chamois  
111

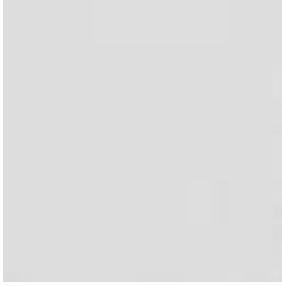


COLLIOURE Pêche 52

**drapilux**  
By Sotexpro

DRAPILUX GmbH - Hafenstraße 3, 77694 Kehl - Deutschland

Non-contractual photos and colors - Indicative fitting - Fitting may vary depending on support selected



# COLLIOURE lin 11

Dieser einfarbige Körperstoff ist in einer Palette mehrerer Farben verfügbar.

## Technische Eigenschaften



Feuerfestigkeit



Wärmeschutz

Applications **Faltgardinen - Flächenvorhänge - Valence-Vorhänge - Vorhänge - Kissen - Dekorative Rahmen**

Zusammensetzung **100% feuerfester Polyester**

Gewicht **270 g/m<sup>2</sup>** Breite **140 cm / 280 cm**

Stoffrichtung **Rückwärts- oder Standardrichtung** Eignung **↔ cm ↓ cm**

Pflegehinweis

Beschriftungen **France Terre Textile (R016)**

Certifications **OEKO-TEX STANDARD 100 (CQ 1006/1)**

Mindestbestellmenge **1**

## Technische Eigenschaften

Feuerfestigkeit	M1 / EN13773 : 2003 Class 1 / B1 / IMO PASS / UNI 8456 / 9174 Classe Uno	
Optischer Index	Lichtreflexion :	<b>64 %</b>
	Lichtabsorption :	<b>19 %</b>
	Lichtdurchlässigkeit :	<b>17 %</b>
Thermaler Index	Sonnenreflexion :	<b>64 %</b>
	Sonnenabsorption :	<b>17 %</b>
	Sonnendurchlässigkeit :	<b>19 %</b>
	UV-Durchlässigkeit :	<b>3 %</b>
	Gtot :	<b>Gt 35 % Fc 61 %</b>
Beständigkeit	Lichtehtheit (Einheiten Klasse/8)	<b>6</b>
	Formstabilität (%)	
	Verzerrung	<b>-3</b>
	Querfäden	<b>-0.5</b>
	Bruchdehnung	
	Verzerrung	<b>26</b>
	Querfäden	<b>28</b>
	Bruchlast (daN)	
Verzerrung	<b>100</b>	
Querfäden	<b>160</b>	