

# COLLIOURE



COLLIOURE Olive 61



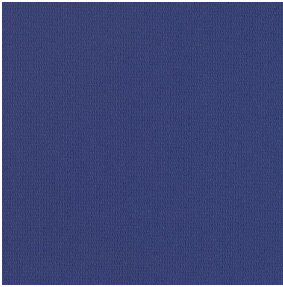
COLLIOURE Agrume 69



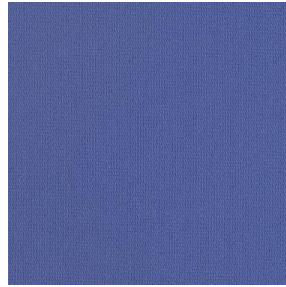
COLLIOURE Miel 17



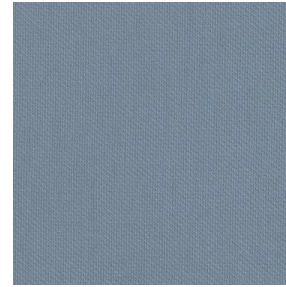
COLLIOURE Mandarine  
93



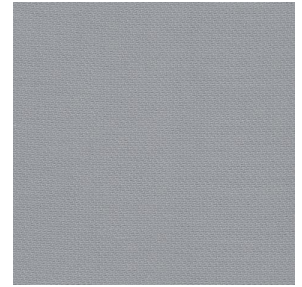
COLLIOURE Océan 91



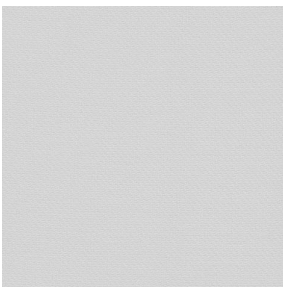
COLLIOURE Pervenche  
13



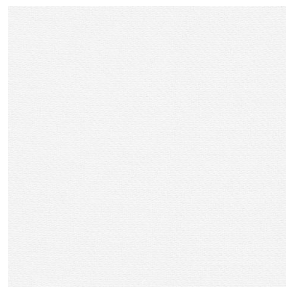
COLLIOURE Ardoise 08



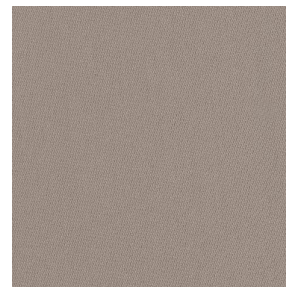
COLLIOURE Glacier 43



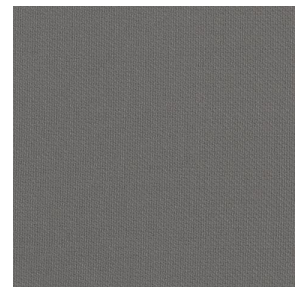
COLLIOURE Souris 31



COLLIOURE Blanc 01



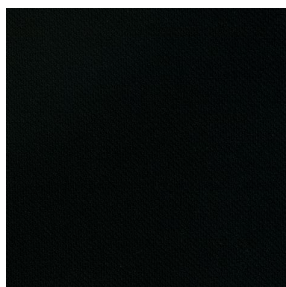
COLLIOURE Naturel 26



COLLIOURE Brun 23



COLLIOURE Titanium 98



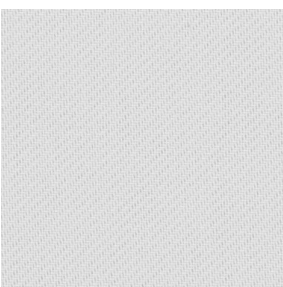
COLLIOURE Noir 12



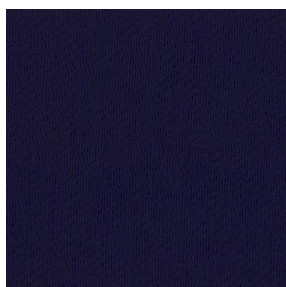
COLLIOURE eucalyptus  
117



COLLIOURE navy 120



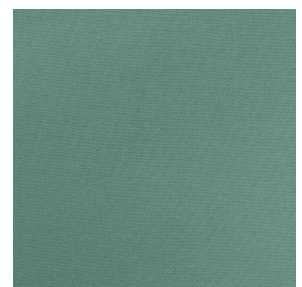
COLLIOURE lin 11



COLLIOURE marine 25



COLLIOURE  
Bergamotte 121



COLLIOURE Absinthe  
132

**drapilux**  
By Sotexpro

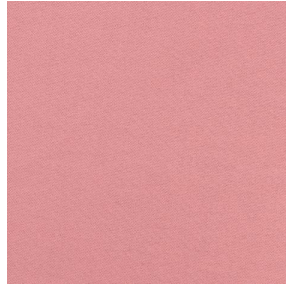
DRAPILUX GmbH - Hafenstraße 3, 77694 Kehl - Deutschland

Non-contractual photos and colors - Indicative fitting - Fitting may vary depending on support selected

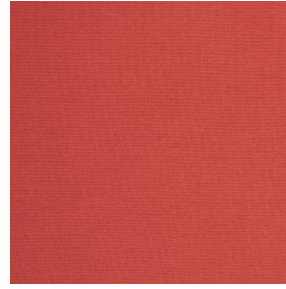
# COLLIOURE



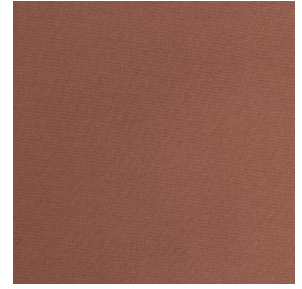
COLLIOURE Arctique 58



COLLIOURE Saumon  
143



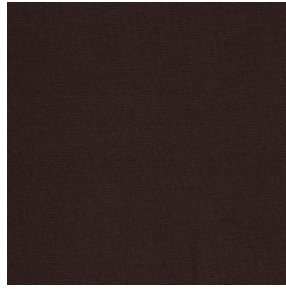
COLLIOURE Tomette 60



COLLIOURE Terre 107



COLLIOURE Aubergine  
27



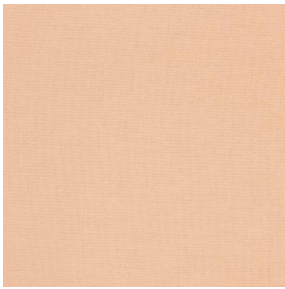
COLLIOURE Cacao 168



COLLIOURE Chataigne  
55



COLLIOURE Chamois  
111

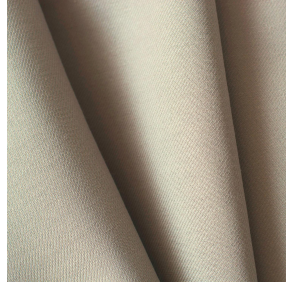
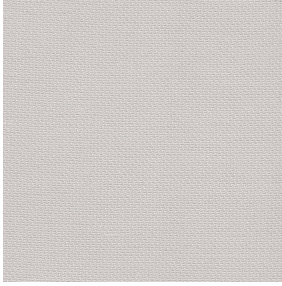


COLLIOURE Pêche 52

**drapilux**  
By Sotexpro

DRAPILUX GmbH - Hafenstraße 3, 77694 Kehl - Deutschland

Non-contractual photos and colors - Indicative fitting - Fitting may vary depending on support selected



# COLLIOURE Ivoire 02

Dieser einfarbige Körperstoff ist in einer Palette mehrerer Farben verfügbar.

## Technische Eigenschaften



Feuerfestigkeit



Wärmeschutz

**Applications** Falzgardinen - Flächenvorhänge - Valence-Vorhänge - Vorhänge - Kissen - Dekorative Rahmen

**Zusammensetzung** 100% feuerfester Polyester

**Gewicht** 270 g/m<sup>2</sup> **Breite** 140 cm / 280 cm

**Stoffrichtung** Rückwärts- oder Standardrichtung **Eignung** ↔ cm ↓ cm

**Pflegehinweis** 

**Beschriftungen** France Terre Textile (R016)

**Certifications** OEKO-TEX STANDARD 100 (CQ 1006/1)

**Mindestbestellmenge** 1



## Technische Eigenschaften

Feuerfestigkeit

M1 / EN13773 : 2003 Class 1 / B1 / IMO PASS / UNI 8456 / 9174  
Classe Uno

Optischer Index

Lichtreflexion : **64 %**

Lichtabsorption : **19 %**

Lichtdurchlässigkeit : **17 %**

Thermaler Index

Sonnenreflexion : **64 %**

Sonnenabsorption : **17 %**

Sonnendurchlässigkeit : **19 %**

UV-Durchlässigkeit : **3 %**

Gtot : **Gt 36 % Fc 61 %**

Beständigkeit

Lichtehtheit (Einheiten Klasse/8) **6**

Formstabilität (%)

Verzerrung **-3**

Querfäden **-0.5**

Bruchdehnung

Verzerrung **26**

Querfäden **28**

Bruchlast (daN)

Verzerrung **100**

Querfäden **160**

**drapilux**  
By Sotexpro

DRAPILUX GmbH - Hafenstraße 3, 77694 Kehl - Deutschland

Non-contractual photos and colors - Indicative fitting - Fitting may vary depending on supports selected