

COLLIOURE



COLLIOURE Olive 61



COLLIOURE Agrume 69



COLLIOURE Miel 17



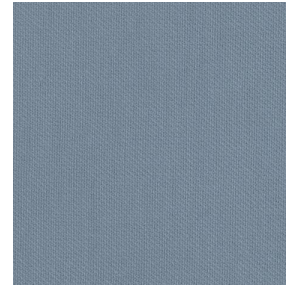
COLLIOURE Mandarine
93



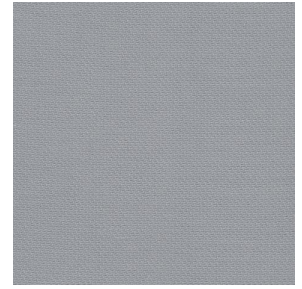
COLLIOURE Océan 91



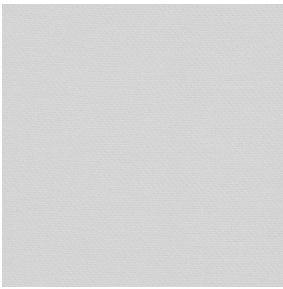
COLLIOURE Pervenche
13



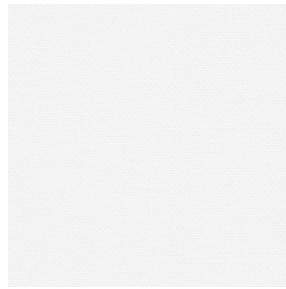
COLLIOURE Ardoise 08



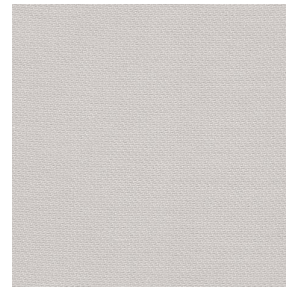
COLLIOURE Glacier 43



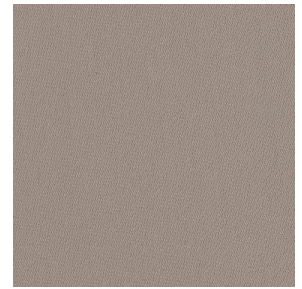
COLLIOURE Souris 31



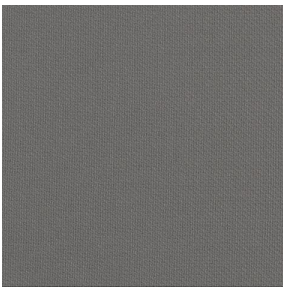
COLLIOURE Blanc 01



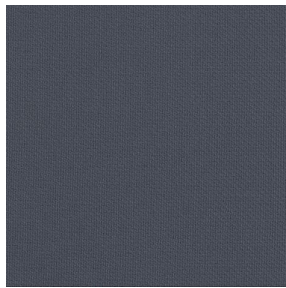
COLLIOURE Ivoire 02



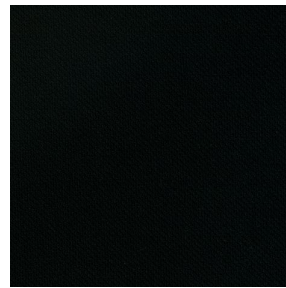
COLLIOURE Naturel 26



COLLIOURE Brun 23



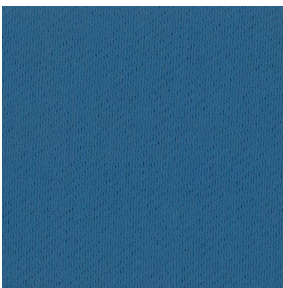
COLLIOURE Titanium 98



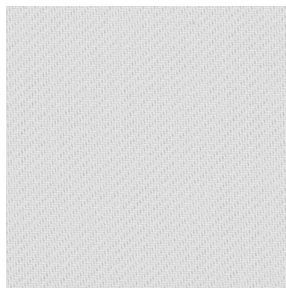
COLLIOURE Noir 12



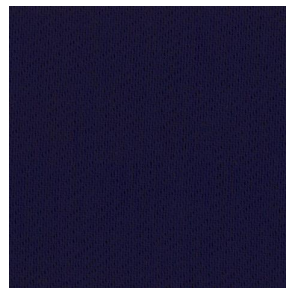
COLLIOURE eucalyptus
117



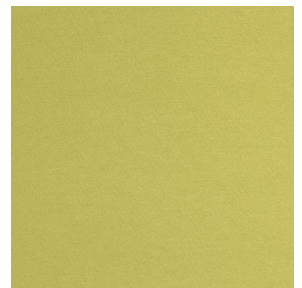
COLLIOURE navy 120



COLLIOURE lin 11



COLLIOURE marine 25



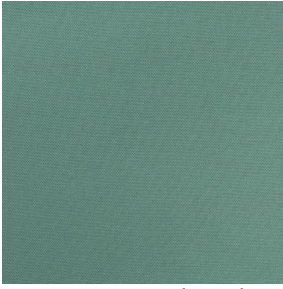
COLLIOURE
Bergamotte 121

drapilux
By Sotexpro

DRAPILUX GmbH - Hafenstraße 3, 77694 Kehl - Deutschland

Non-contractual photos and colors - Indicative fitting - Fitting may vary depending on support selected

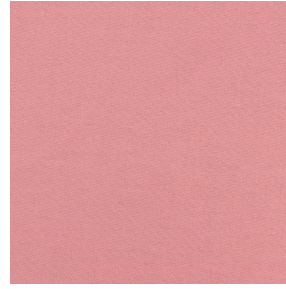
COLLIOURE



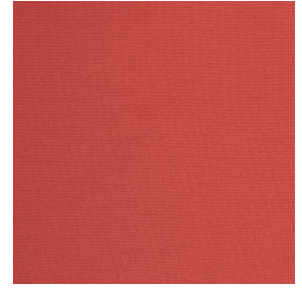
COLLIOURE Absinthe
132



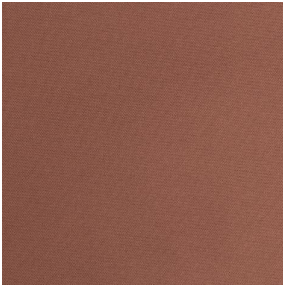
COLLIOURE Arctique 58



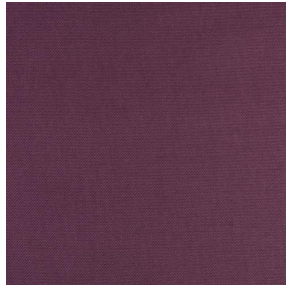
COLLIOURE Saumon
143



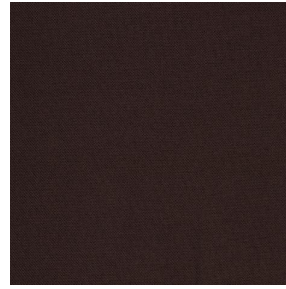
COLLIOURE Tomette 60



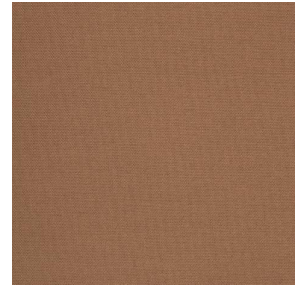
COLLIOURE Terre 107



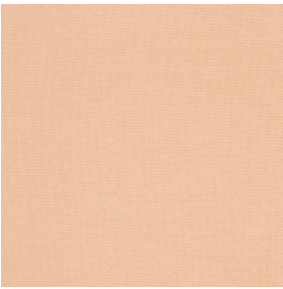
COLLIOURE Aubergine
27



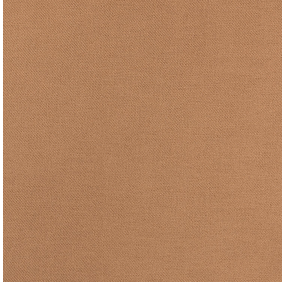
COLLIOURE Cacao 168



COLLIOURE Chataigne
55



COLLIOURE Pêche 52



COLLIOURE Chamois 111

Dieser einfarbige Körperstoff ist in einer Palette mehrerer Farben verfügbar.

Technische Eigenschaften



Feuerfestigkeit



Wärmeschutz

Applications Faltgardinen - Flächenvorhänge - Valence-Vorhänge - Vorhänge - Kissen - Dekorative Rahmen

Zusammensetzung 100% feuerfester Polyester

Gewicht 270 g/m² Breite 140 cm / 280 cm

Stoffrichtung Rückwärts- oder Standardrichtung Eignung ↔ cm ↓ cm

Pflegehinweis

Beschriftungen France Terre Textile (R016)

Certifications OEKO-TEX STANDARD 100 (CQ 1006/1)

Mindestbestellmenge 1

Technische Eigenschaften

Feuerfestigkeit

M1 / EN13773 : 2003 Class 1 / B1 / IMO PASS / UNI 8456 / 9174
Classe Uno

Optischer Index

Lichtreflexion : 64 %

Lichtabsorption : 19 %

Lichtdurchlässigkeit : 17 %

Thermaler Index

Sonnenreflexion : 64 %

Sonnenabsorption : 17 %

Sonnendurchlässigkeit : 19 %

UV-Durchlässigkeit : 3 %

Gtot : Gt 36 % Fc 61 %

Beständigkeit

Lichtehtheit (Einheiten Klasse/8) 6

Formstabilität (%)

Verzerrung -3

Querfäden -0.5

Bruchdehnung

Verzerrung 26

Querfäden 28

Bruchlast (daN)

Verzerrung 100

Querfäden 160

drapilux
By Sotexpro

DRAPILUX GmbH - Hafenstraße 3, 77694 Kehl - Deutschland

Non-contractual photos and colors - Indicative fitting - Fitting may vary depending on support selected