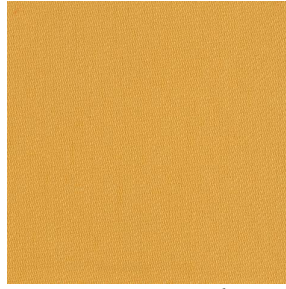


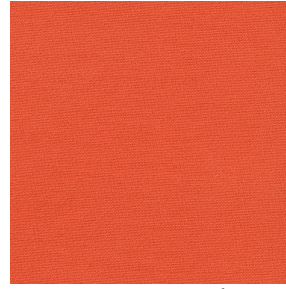
# COLLIOURE



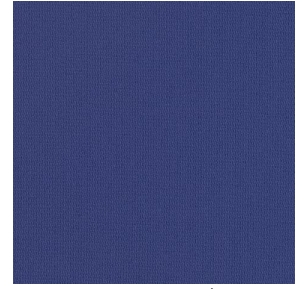
COLLIOURE Olive 61



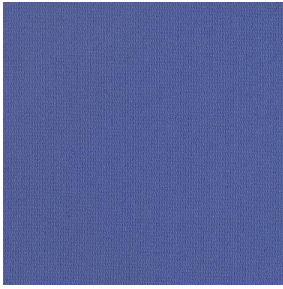
COLLIOURE Miel 17



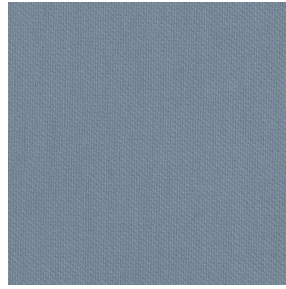
COLLIOURE Mandarine  
93



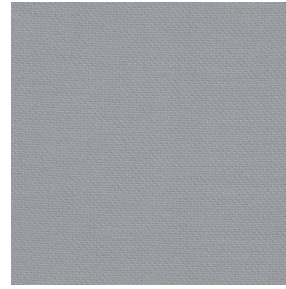
COLLIOURE Océan 91



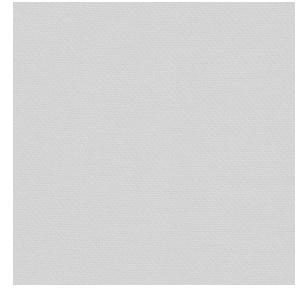
COLLIOURE Pervenche  
13



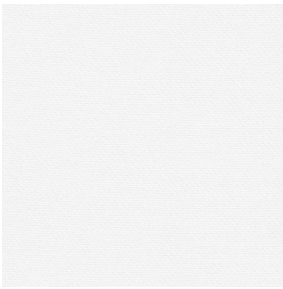
COLLIOURE Ardoise 08



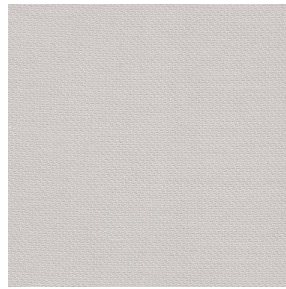
COLLIOURE Glacier 43



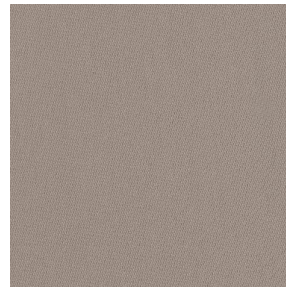
COLLIOURE Souris 31



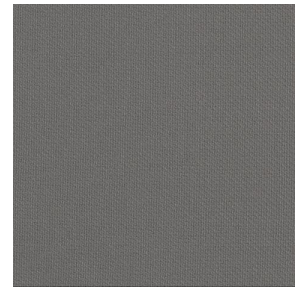
COLLIOURE Blanc 01



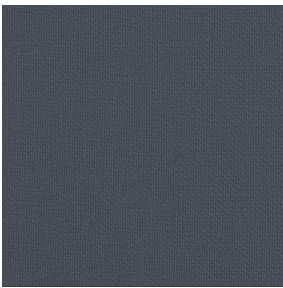
COLLIOURE Ivoire 02



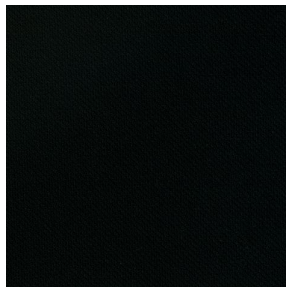
COLLIOURE Naturel 26



COLLIOURE Brun 23



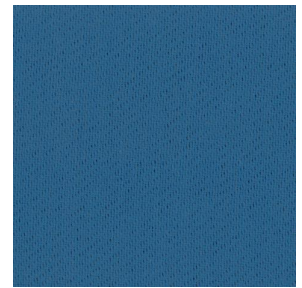
COLLIOURE Titanium 98



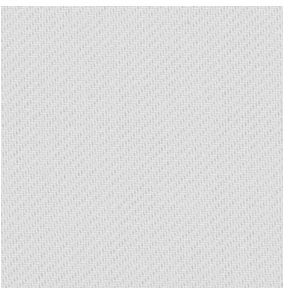
COLLIOURE Noir 12



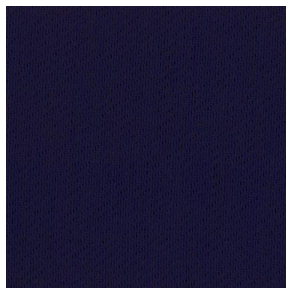
COLLIOURE eucalyptus  
117



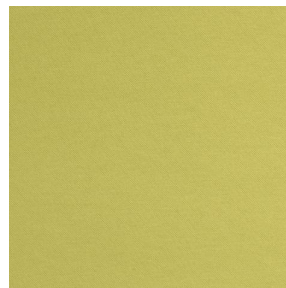
COLLIOURE navy 120



COLLIOURE lin 11



COLLIOURE marine 25



COLLIOURE  
Bergamotte 121



COLLIOURE Absinthe  
132

**drapilux**  
By Sotexpro

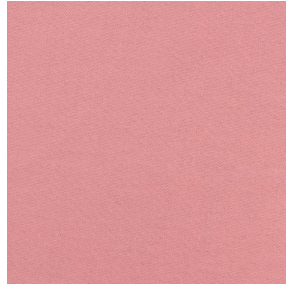
DRAPILUX GmbH - Hafenstraße 3, 77694 Kehl - Deutschland

Non-contractual photos and colors - Indicative fitting - Fitting may vary depending on support selected

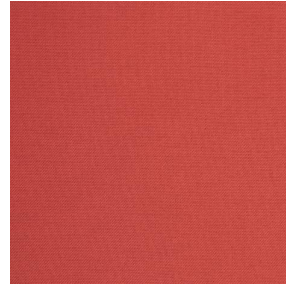
# COLLIOURE



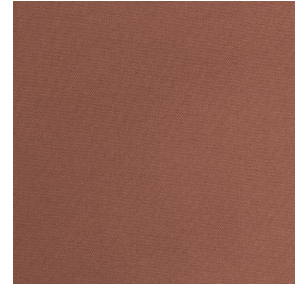
COLLIOURE Arctique 58



COLLIOURE Saumon  
143



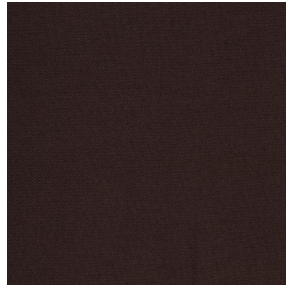
COLLIOURE Tomette 60



COLLIOURE Terre 107



COLLIOURE Aubergine  
27



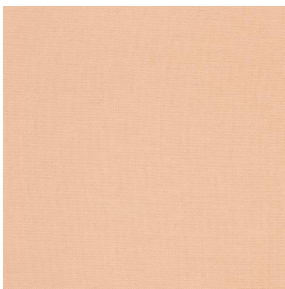
COLLIOURE Cacao 168



COLLIOURE Chataigne  
55



COLLIOURE Chamois  
111

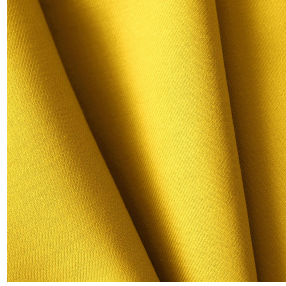
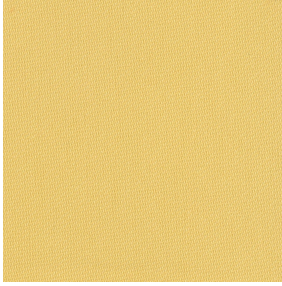


COLLIOURE Pêche 52

**drapilux**  
By Sotexpro

DRAPILUX GmbH - Hafenstraße 3, 77694 Kehl - Deutschland

Non-contractual photos and colors - Indicative fitting - Fitting may vary depending on support selected



# COLLIOURE Agrume 69

Dieser einfarbige Körperstoff ist in einer Palette mehrerer Farben verfügbar.

## Technische Eigenschaften



Feuerfestigkeit



Wärmeschutz

Applications Faltgardinen - Flächenvorhänge - Valence-Vorhänge - Vorhänge - Kissen - Dekorative Rahmen

Zusammensetzung 100% feuerfester Polyester

Gewicht 270 g/m<sup>2</sup> Breite 140 cm / 280 cm

Stoffrichtung Rückwärts- oder Standardrichtung Eignung ↔ cm ↓ cm

Pflegehinweis

Beschriftungen France Terre Textile (R016)

Certifications OEKO-TEX STANDARD 100 (CQ 1006/1)

Mindestbestellmenge 1



## Technische Eigenschaften

Feuerfestigkeit

M1 / EN13773 : 2003 Class 1 / B1 / IMO PASS / UNI 8456 / 9174 Classe Uno

Optischer Index

Lichtreflexion : 64 %

Lichtabsorption : 19 %

Lichtdurchlässigkeit : 17 %

Thermaler Index

Sonnenreflexion : 64 %

Sonnenabsorption : 17 %

Sonnendurchlässigkeit : 19 %

UV-Durchlässigkeit : 3 %

Gtot : Gt 36 % Fc 61 %

Beständigkeit

Lichtehtheit (Einheiten Klasse/8) 6

Formstabilität (%)

Verzerrung -3

Querfäden -0.5

Bruchdehnung

Verzerrung 26

Querfäden 28

Bruchlast (daN)

Verzerrung 100

Querfäden 160

**drapilux**  
By Sotexpro

DRAPILUX GmbH - Hafenstraße 3, 77694 Kehl - Deutschland

Non-contractual photos and colors - Indicative fitting - Fitting may vary depending on support selected