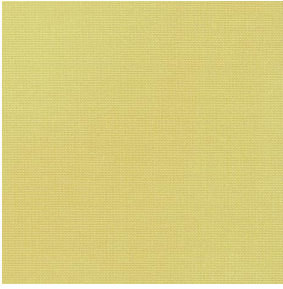


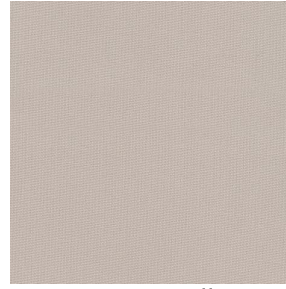
COLLEGE



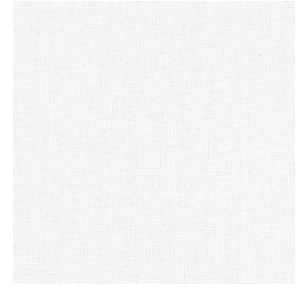
COLLEGE Anis 62



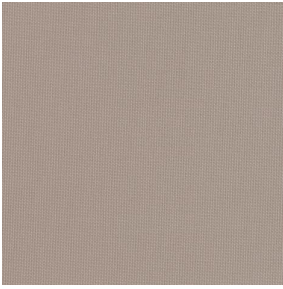
COLLEGE Poussin 20



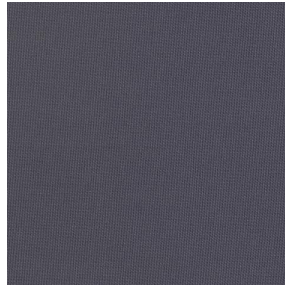
COLLEGE Ficelle 09



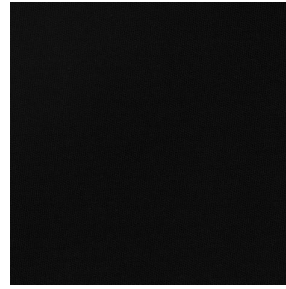
COLLEGE Nacre 04



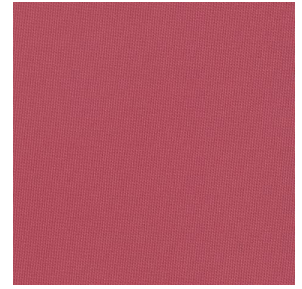
COLLEGE Naturel 26



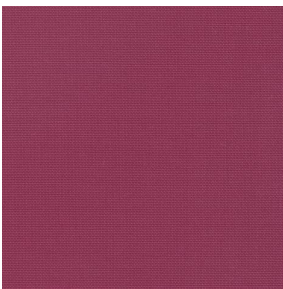
COLLEGE acier 18



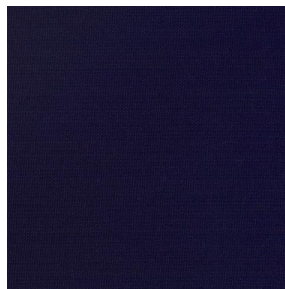
COLLEGE Noir 10



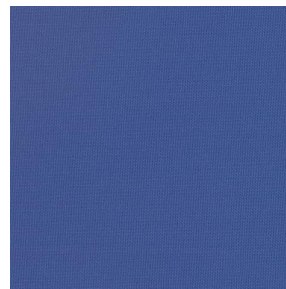
COLLEGE Corail 14



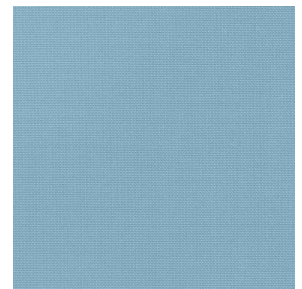
COLLEGE Framboise 81



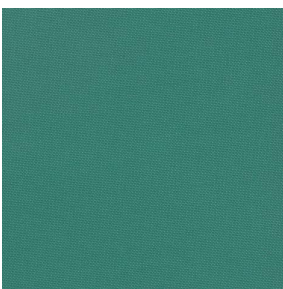
COLLEGE Marine 25



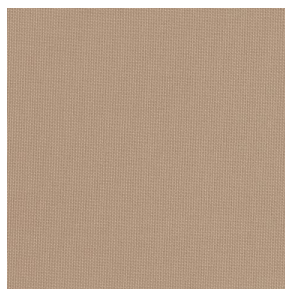
COLLEGE Gentiane 16



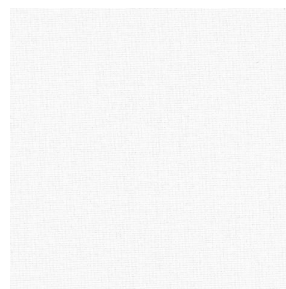
COLLEGE Turquoise 53



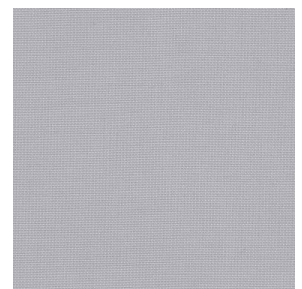
COLLEGE Vert 24



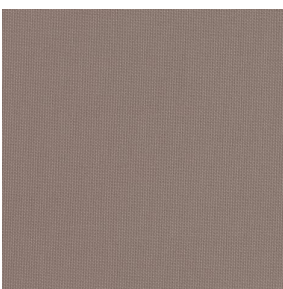
COLLEGE Mastic 48



COLLEGE Blanc 01



COLLEGE Souris 31



COLLEGE Moka 13



COLLEGE Mordoré 133



COLLEGE Paille 83



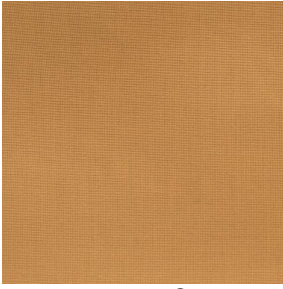
COLLEGE Pêche 52

drapilux
By Sotexpro

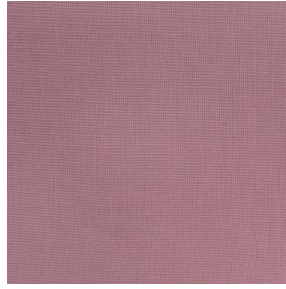
DRAPILUX GmbH - Hofenstraße 3, 77694 Kehl - Deutschland

Non-contractual photos and colors - Indicative fitting - Fitting may vary depending on support selected

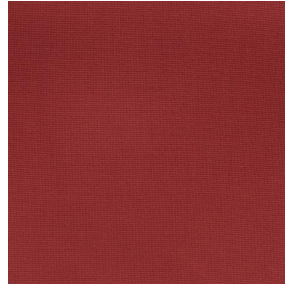
COLLEGE



COLLEGE Safran 49



COLLEGE Havane 44



COLLEGE Sanguine 05



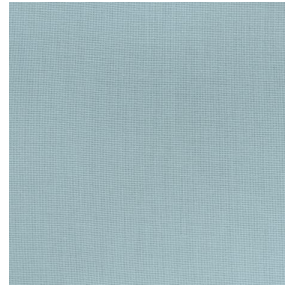
COLLEGE Evêque 154



COLLEGE Bergamotte
121



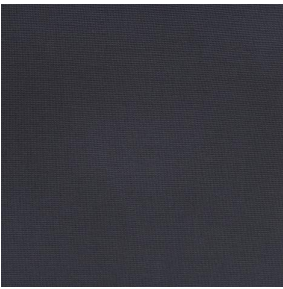
COLLEGE Olive 61



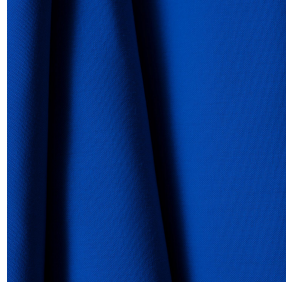
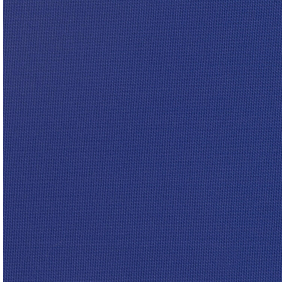
COLLEGE Absinthe 132



COLLEGE Indigo 144



COLLEGE Titanium 98



COLLEGE Naval 17

Dieser Licht filternde Stoff ist in einer Reihe mehrerer Farben erhältlich, die Ihnen einige großartige Dekorationsmöglichkeiten bieten.

Technische Eigenschaften



Feuerfestigkeit



Wärmeschutz

Applications Faltgardinen - Flächenvorhänge - Vorhänge - Dekorative Rahmen

Zusammensetzung 100% feuerfester Polyester

Gewicht 200 g/m² Breite 140 cm / 280 cm

Stoffrichtung Rückwärts- oder Standardrichtung Eignung ↔ cm ↑ cm

Pflegehinweis 

Beschriftungen France Terre Textile (R016)

Certifications OEKO-TEX STANDARD 100 (CQ 1006/1)

Mindestbestellmenge 1

Technische Eigenschaften

Feuerfestigkeit

M1 / EN13773 : 2003 Class 1 / B1 / IMO PASS / UNI 8456 / 9174
Classe Uno

Optischer Index

Lichtreflexion :	21 %
Lichtabsorption :	71 %
Lichtdurchlässigkeit :	8 %

Thermaler Index

Sonnenreflexion :	43 %
Sonnenabsorption :	35 %
Sonnendurchlässigkeit :	22 %
UV-Durchlässigkeit :	8 %
Gtot :	Gt 43 % Fc 73 %

Beständigkeit

Lichtehtheit (Einheiten Klasse/8)	6
Formstabilität (%)	
Verzerrung	-2
Querfäden	-0.5
Bruchdehnung	
Verzerrung	23
Querfäden	24
Bruchlast (daN)	
Verzerrung	93
Querfäden	120

drapilux
By Sotexpro

DRAPILUX GmbH - Hafenstraße 3, 77694 Kehl - Deutschland

Non-contractual photos and colors - Indicative fitting - Fitting may vary depending on support selected