

COLLEGE



COLLEGE Naval 17



COLLEGE Anis 62



COLLEGE Poussin 20



COLLEGE Ficelle 09



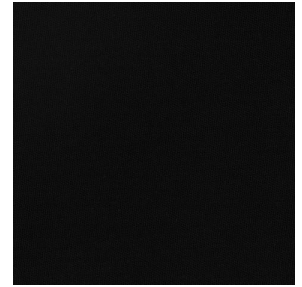
COLLEGE Nacre 04



COLLEGE Naturel 26



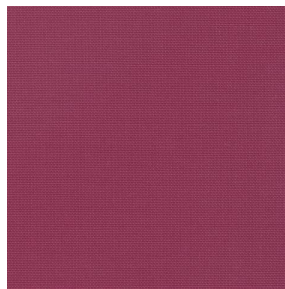
COLLEGE acier 18



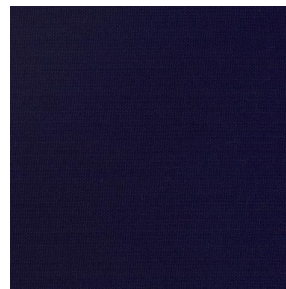
COLLEGE Noir 10



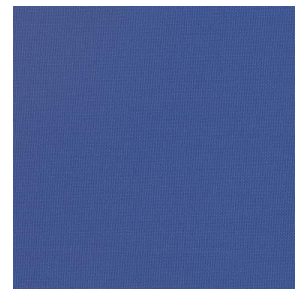
COLLEGE Corail 14



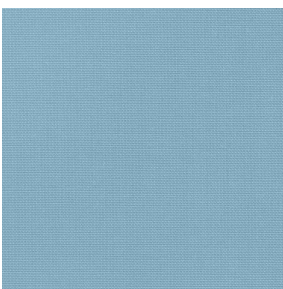
COLLEGE Framboise 81



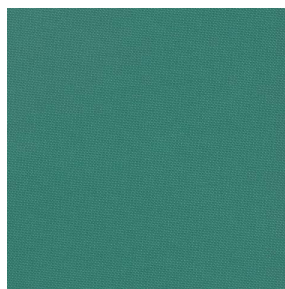
COLLEGE Marine 25



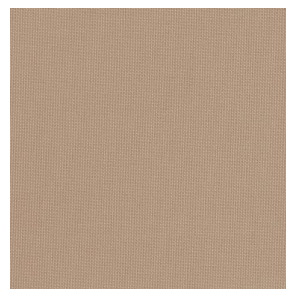
COLLEGE Gentiane 16



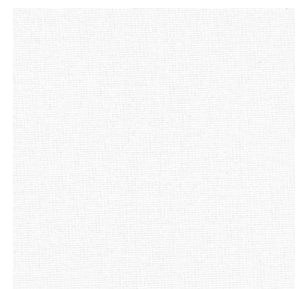
COLLEGE Turquoise 53



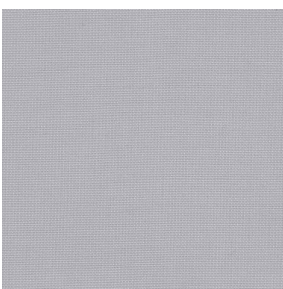
COLLEGE Vert 24



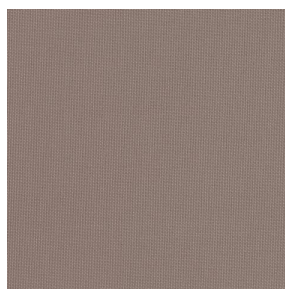
COLLEGE Mastic 48



COLLEGE Blanc 01



COLLEGE Souris 31



COLLEGE Moka 13



COLLEGE Mordoré 133



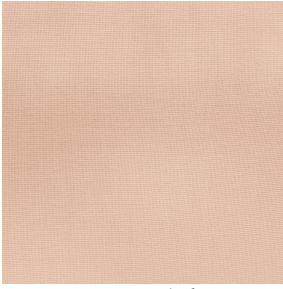
COLLEGE Paille 83

drapilux
By Sotexpro

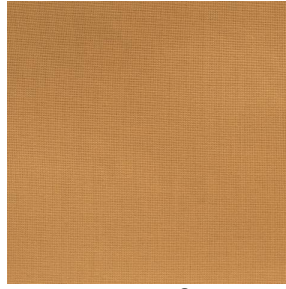
DRAPILUX GmbH - Hafenstraße 3, 77694 Kehl - Deutschland

Non-contractual photos and colors - Indicative fitting - Fitting may vary depending on support selected

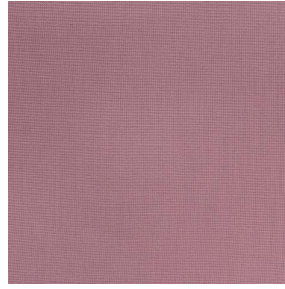
COLLEGE



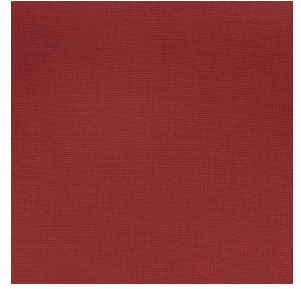
COLLEGE Pêche 52



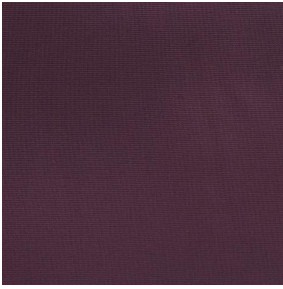
COLLEGE Safran 49



COLLEGE Havane 44



COLLEGE Sanguine 05



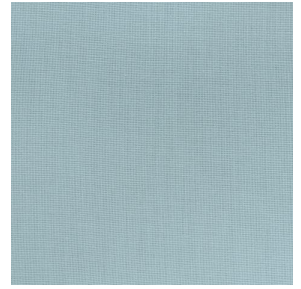
COLLEGE Evêque 154



COLLEGE Bergamotte
121



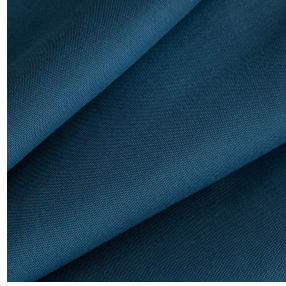
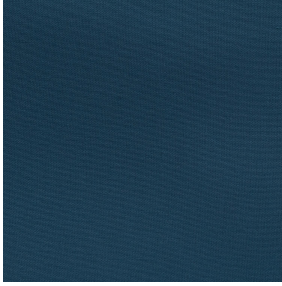
COLLEGE Olive 61



COLLEGE Absinthe 132



COLLEGE Titanium 98



COLLEGE Indigo 144

Dieser Licht filternde Stoff ist in einer Reihe mehrerer Farben erhältlich, die Ihnen einige großartige Dekorationsmöglichkeiten bieten.

Technische Eigenschaften



Feuerfestigkeit



Wärmeschutz

Applications Faltgardinen - Flächenvorhänge - Vorhänge - Dekorative Rahmen

Zusammensetzung 100% feuerfester Polyester

Gewicht 200 g/m² Breite 140 cm / 280 cm

Stoffrichtung Rückwärts- oder Standardrichtung Eignung ↔ cm ↑ cm

Pflegehinweis

Beschriftungen France Terre Textile (R016)

Certifications OEKO-TEX STANDARD 100 (CQ 1006/1)

Mindestbestellmenge 1

Technische Eigenschaften

Feuerfestigkeit	M1 / EN13773 : 2003 Class 1 / B1 / IMO PASS / UNI 8456 / 9174 Classe Uno	
Optischer Index	Lichtreflexion :	2 %
	Lichtabsorption :	93 %
	Lichtdurchlässigkeit :	5 %
Thermaler Index	Sonnenreflexion :	28 %
	Sonnenabsorption :	53 %
	Sonnendurchlässigkeit :	19 %
	UV-Durchlässigkeit :	5 %
	Gtot :	Gt 48 % Fc 81 %
Beständigkeit	Lichtehtheit (Einheiten Klasse/8)	4
	Formstabilität (%)	
	Verzerrung	-2.5
	Querfäden	-0.5
	Bruchdehnung	
	Verzerrung	23
	Querfäden	24
	Bruchlast (daN)	
Verzerrung	93	
Querfäden	120	