

CHARLOTTE



CHARLOTTE Absinthe
132



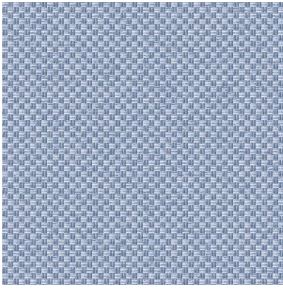
CHARLOTTE Anis 62



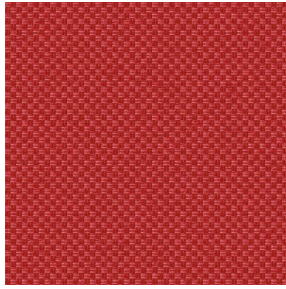
CHARLOTTE Beige 63



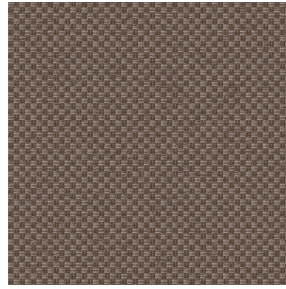
CHARLOTTE Bouteille
101



CHARLOTTE Brume 47



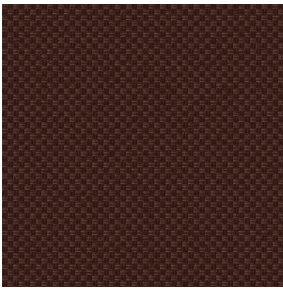
CHARLOTTE Cerise 66



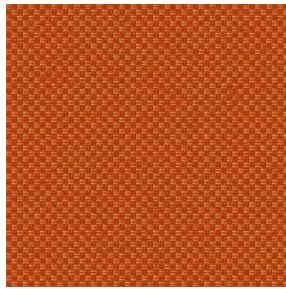
CHARLOTTE Chamois
111



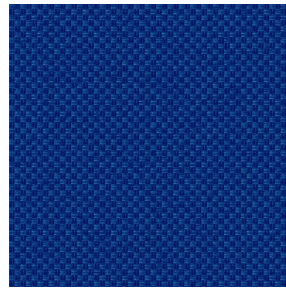
CHARLOTTE Chaudron
118



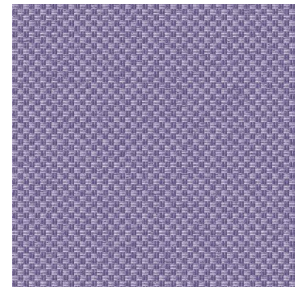
CHARLOTTE Chocolat
70



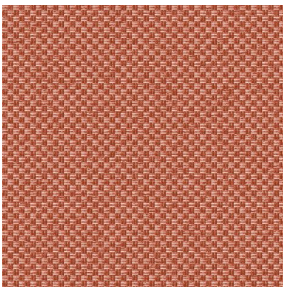
CHARLOTTE Citrouille
136



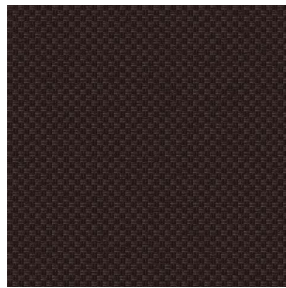
CHARLOTTE Cobalt 114



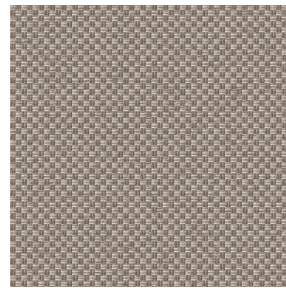
CHARLOTTE Crepuscule
45



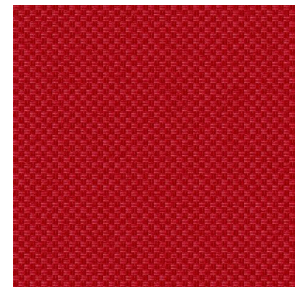
CHARLOTTE Cuivre 50



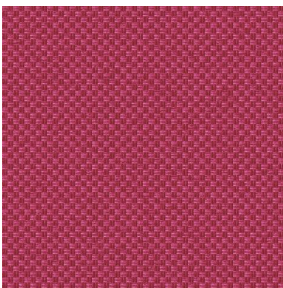
CHARLOTTE Ebene 124



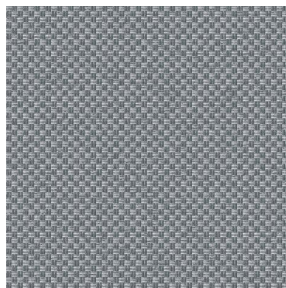
CHARLOTTE Ficelle 09



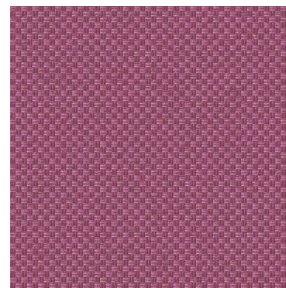
CHARLOTTE Fiesta 131



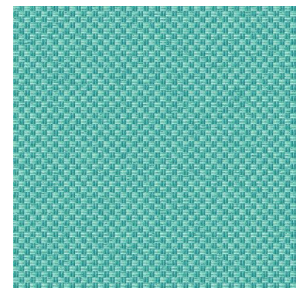
CHARLOTTE Grenat 56



CHARLOTTE Gris 97



CHARLOTTE Hortensia
134



CHARLOTTE Lagon 110

drapilux
By Sotexpro

DRAPILUX GmbH - Hofenstraße 3, 77694 Kehl - Deutschland

Non-contractual photos and colors - Indicative fitting - Fitting may vary depending on support selected

CHARLOTTE



CHARLOTTE Lilas 19



CHARLOTTE Lin 11



CHARLOTTE Maïs 37



CHARLOTTE Melon 22



CHARLOTTE Menthe
122



CHARLOTTE Mordore
133



CHARLOTTE Mousse 92



CHARLOTTE Noir 10



CHARLOTTE Océan 91



CHARLOTTE Opéra 104



CHARLOTTE Orange 15



CHARLOTTE Pacifique
54



CHARLOTTE Prairie 125



CHARLOTTE Printemps
130



CHARLOTTE Sienne 29



CHARLOTTE Souris 31



CHARLOTTE Terre 107



CHARLOTTE Tilleul 103



CHARLOTTE Vieux rose
64



CHARLOTTE Violine 105

drapilux
By Sotexpro

DRAPILUX GmbH - Hafenstraße 3, 77694 Kehl - Deutschland

Non-contractual photos and colors - Indicative fitting - Fitting may vary depending on support selected

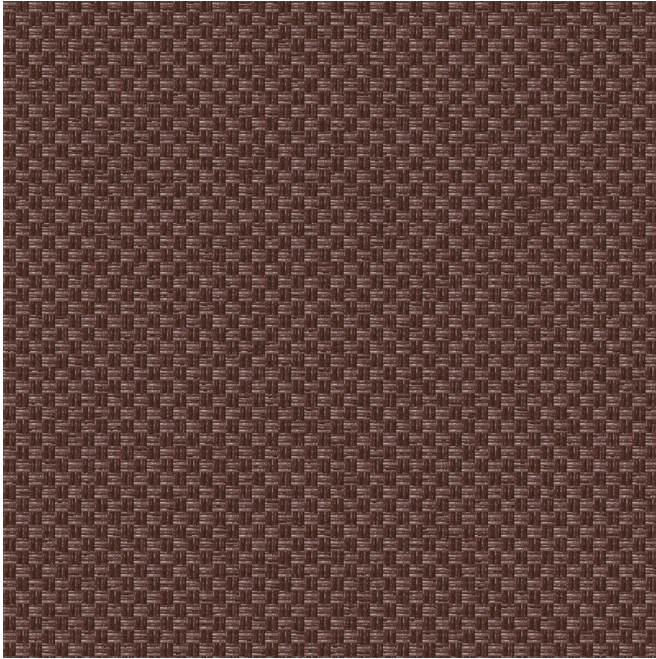
CHARLOTTE Chataigne 55

Gruppe **B**

Eignung: ↔ 0.0 cm ↓ 0.0 cm "Eignung kann je nach gewähltem Trägergewebe unterschiedlich sein"



Zur Auswahl des Druckträgers und seiner Breite (Breite), wenden Sie sich bitte an Ihren Verkaufsvertreter. Kontaktieren Sie einen Berater



drapilux
By Sotexpro

DRAPILUX GmbH - Hafenstraße 3, 77694 Kehl - Deutschland

Non-contractual photos and colors - Indicative fitting - Fitting may vary depending on support selected