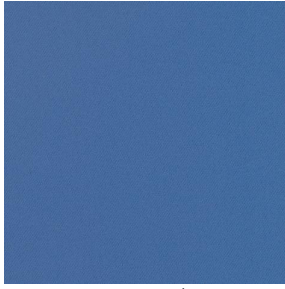
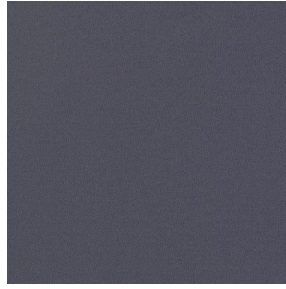


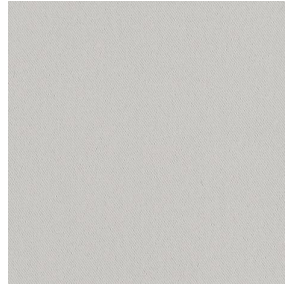
BOREAL



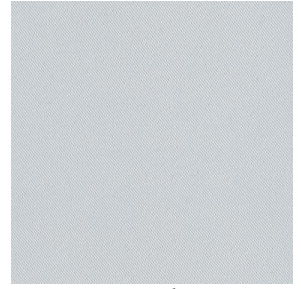
BOREAL Océan 91



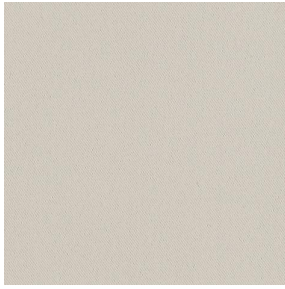
BOREAL Acier 18



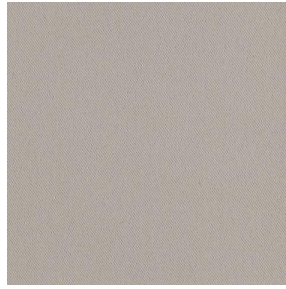
BOREAL Gris 97



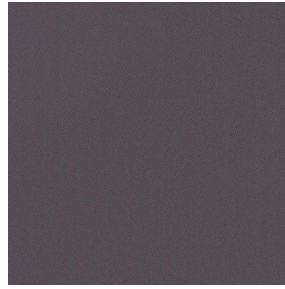
BOREAL Blanc 01



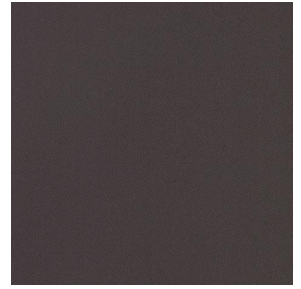
BOREAL Crème 02



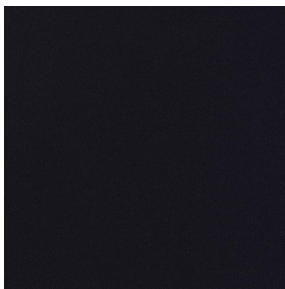
BOREAL Mastic 48



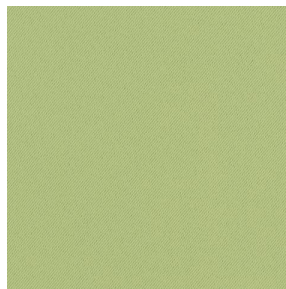
BOREAL Taupe 95



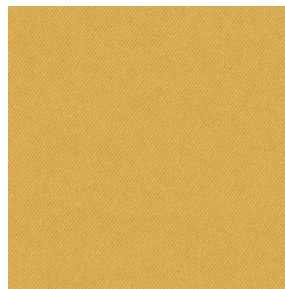
BOREAL Chocolat 70



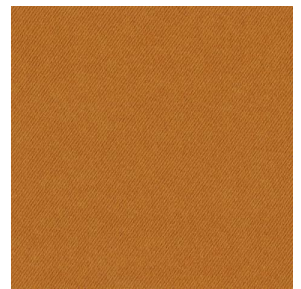
BOREAL Noir 10



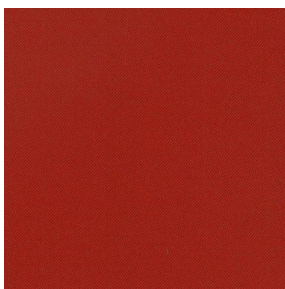
BOREAL Mousse 92



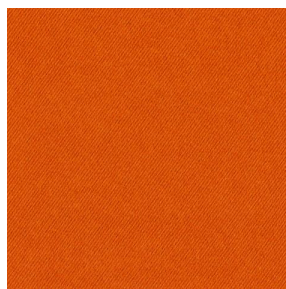
BOREAL Moutarde 47



BOREAL Cuivre 50



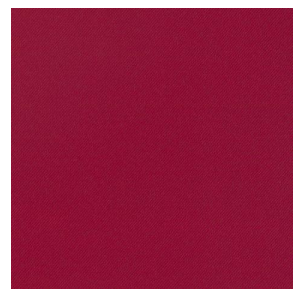
BOREAL Terracotta 65



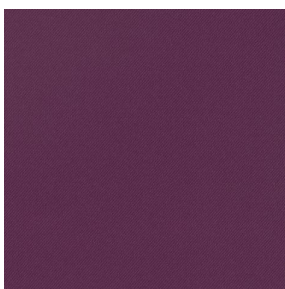
BOREAL Orange 15



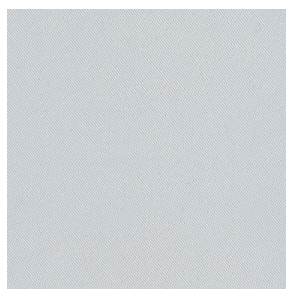
BOREAL Fuchsia 33



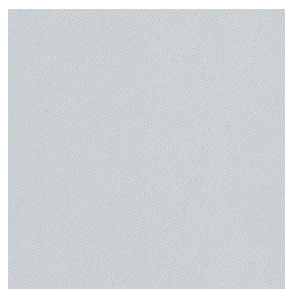
BOREAL Bordeaux 04



BOREAL Prune 84



BOREAL BPI 00



BOREAL BPI 00



BOREAL cactus 36

drapilux
By Sotexpro

DRAPILUX GmbH - Hofenstraße 3, 77694 Kehl - Deutschland

Non-contractual photos and colors - Indicative fitting - Fitting may vary depending on support selected

BOREAL



BOREAL emeraude 88



BOREAL nuit 128



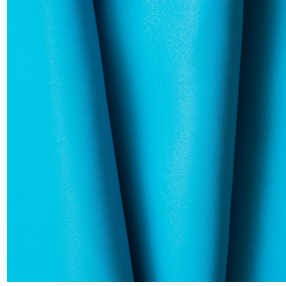
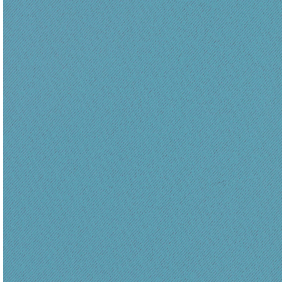
BOREAL Titanium 98



BOREAL Faience 149



BOREAL Indigo 144



BOREAL Turquoise 53

Dieser einfarbige Stoff ist in einer Reihe mehrerer Farben erhältlich, die sich für jegliche Stils und Launen eignen.

Technische Eigenschaften



Feuerfestigkeit



Wärmeschutz



Akustik

Applications Faltgardinen - Valence-Vorhänge - Innenfutter - Bettläufer - Vorhänge

Zusammensetzung 100% feuerfester Polyester

Gewicht 260 g/m² Breite 290 cm

Stoffrichtung Rückwärts- oder Standardrichtung Eignung ↔ cm ↑ cm

Pflegehinweis

Certifications OEKO-TEX STANDARD 100 (CQ 1006/1)

Mindestbestellmenge 1



Technische Eigenschaften

Feuerfestigkeit	M1 / B1 / IMO PASS / UNI 8456 / 9174 Classe Uno
Akustik	Schalldämpfungskoeffizient (NRC) : 0.88
	Gewichteter Schallabsorptionskoeffizient (a _w) : 0.90
	Akustische Absorptionsklasse (a _w) : A
Optischer Index	Lichtreflexion : 55 %
	Lichtabsorption : 45 %
	Lichtdurchlässigkeit : 0 %
Thermaler Index	Sonnenreflexion : 53 %
	Sonnenabsorption : 47 %
	Sonnendurchlässigkeit : 0 %
	UV-Durchlässigkeit : 0 %
	G _{tot} : Gt 40 % Fc 67 %
Beständigkeit	Lichteinheit (Einheiten Klasse/8) 6
	Formstabilität (%)
	Verzerrung 0
	Querfäden 0
	Bruchdehnung
	Verzerrung 17
	Querfäden 27
	Bruchlast (daN)
	Verzerrung 87
Querfäden 110	



DRAPILUX GmbH - Hofenstraße 3, 77694 Kehl - Deutschland

Non-contractual photos and colors - Indicative fitting - Fitting may vary depending on support selected