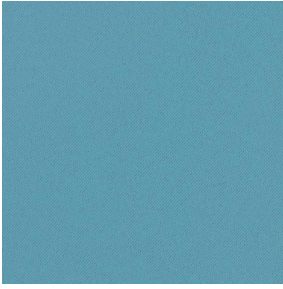
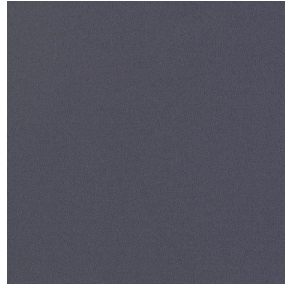


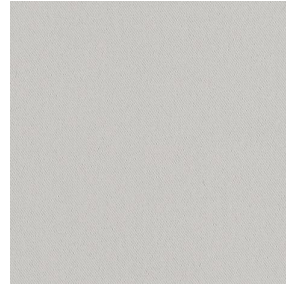
# BOREAL



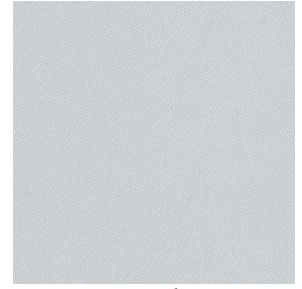
BOREAL Turquoise 53



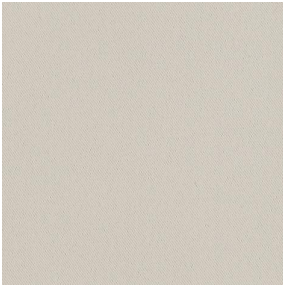
BOREAL Acier 18



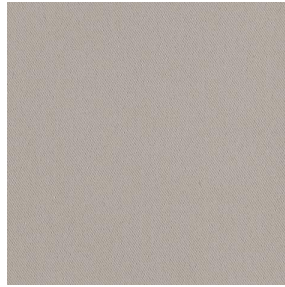
BOREAL Gris 97



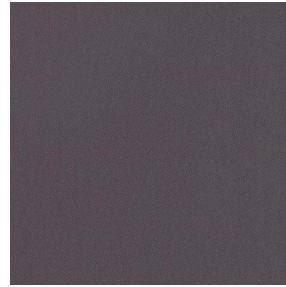
BOREAL Blanc 01



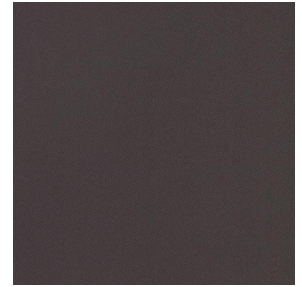
BOREAL Crème 02



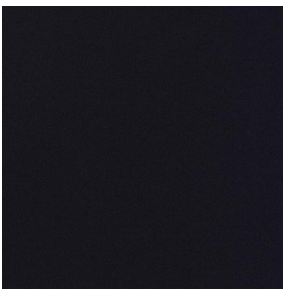
BOREAL Mastic 48



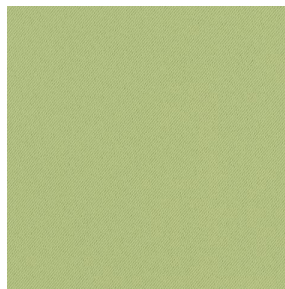
BOREAL Taupe 95



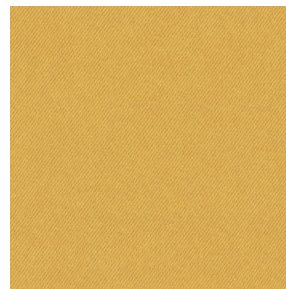
BOREAL Chocolat 70



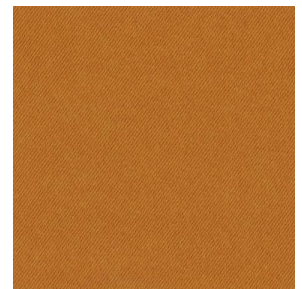
BOREAL Noir 10



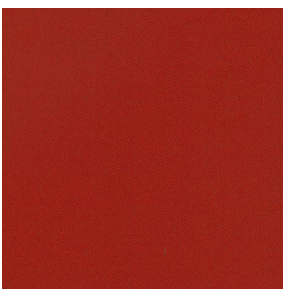
BOREAL Mousse 92



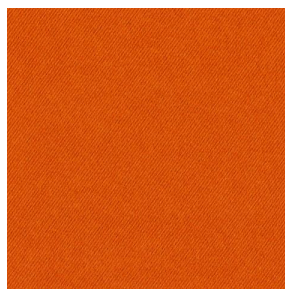
BOREAL Moutarde 47



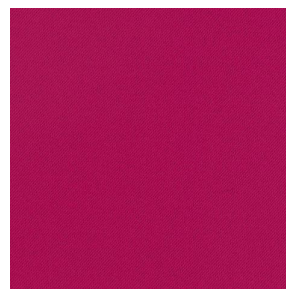
BOREAL Cuivre 50



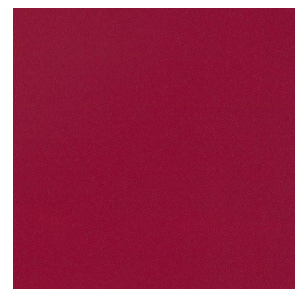
BOREAL Terracotta 65



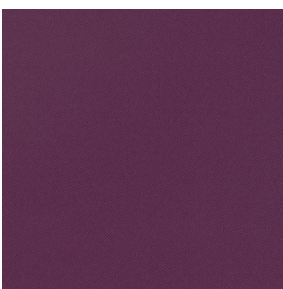
BOREAL Orange 15



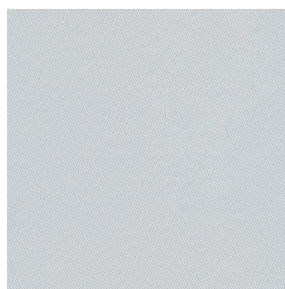
BOREAL Fuchsia 33



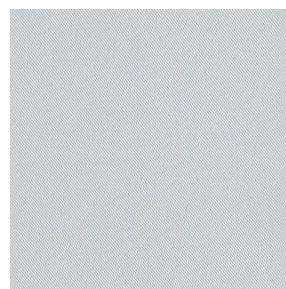
BOREAL Bordeaux 04



BOREAL Prune 84



BOREAL BPI 00



BOREAL BPI 00



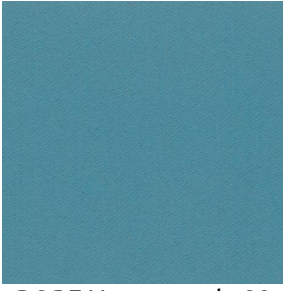
BOREAL cactus 36

**drapilux**  
By Sotexpro

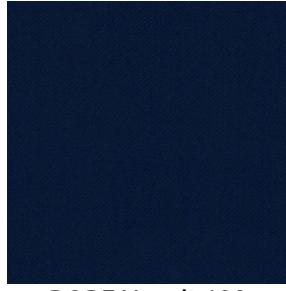
DRAPILUX GmbH - Hofenstraße 3, 77694 Kehl - Deutschland

Non-contractual photos and colors - Indicative fitting - Fitting may vary depending on support selected

# BOREAL



BOREAL emeraude 88



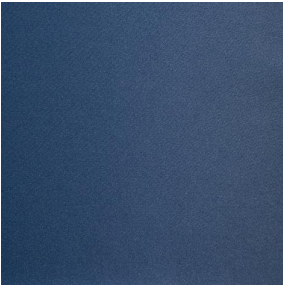
BOREAL nuit 128



BOREAL Titanium 98



BOREAL Faience 149



BOREAL Indigo 144



# BOREAL Oc an 91

Dieser einfarbige Stoff ist in einer Reihe mehrerer Farben erhaltlich, die sich f r jegliche Stils und Launen eignen.

## Technische Eigenschaften



Feuerfestigkeit



Warmeschutz



Akustik

Applications Faltgardinen - Valence-Vorhange - Innenfutter - Bettlaufer - Vorhange

Zusammensetzung 100% feuerfester Polyester

Gewicht 260 g/m<sup>2</sup> Breite 290 cm

Stoffrichtung R ckwarts- oder Standardrichtung Eignung ↔ cm ↑ cm

Pflegehinweis     

Certifications OEKO-TEX STANDARD 100 (CQ 1006/1)

Mindestbestellmenge 1



## Technische Eigenschaften

Feuerfestigkeit	M1 / B1 / IMO PASS / UNI 8456 / 9174 Classe Uno
Akustik	Schalldampfungskoeffizient (NRC) : <b>0.88</b> Gewichteter Schallabsorptionskoeffizient (a <sub>w</sub> ) : <b>0.90</b> Akustische Absorptionsklasse (a <sub>w</sub> ) : <b>A</b>
Optischer Index	Lichtreflexion : <b>55 %</b> Lichtabsorption : <b>45 %</b> Lichtdurchlassigkeit : <b>0 %</b>
Thermaler Index	Sonnenreflexion : <b>53 %</b> Sonnenabsorption : <b>47 %</b> Sonnendurchlassigkeit : <b>0 %</b> UV-Durchlassigkeit : <b>0 %</b> G <sub>tot</sub> : <b>Gt 40 % Fc 67 %</b>
Bestandigkeit	Lichtechtheit (Einheiten Klasse/8) <b>6</b> Formstabilitat (%) Verzerrung <b>0</b> Querfaden <b>0</b> Bruchdehnung Verzerrung <b>17</b> Querfaden <b>27</b> Bruchlast (daN) Verzerrung <b>87</b> Querfaden <b>110</b>

**drapilux**  
By Sotexpro

DRAPILUX GmbH - Hofenstra e 3, 77694 Kehl - Deutschland

Non-contractual photos and colors - Indicative fitting - Fitting may vary depending on support selected