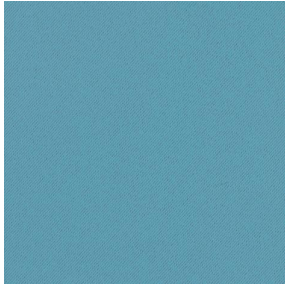
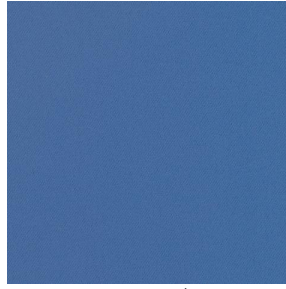


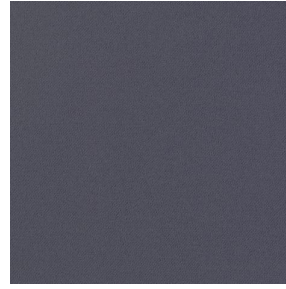
BOREAL



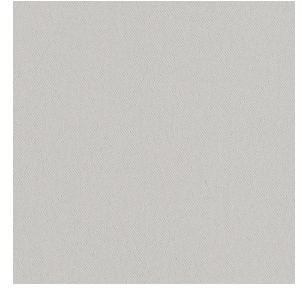
BOREAL Turquoise 53



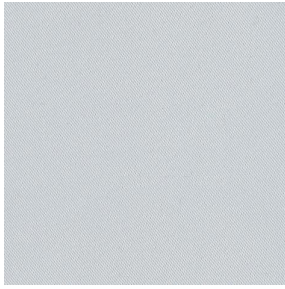
BOREAL Océan 91



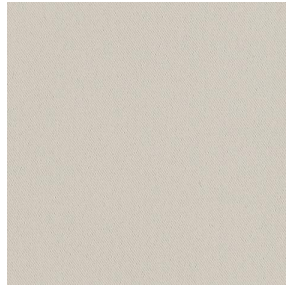
BOREAL Acier 18



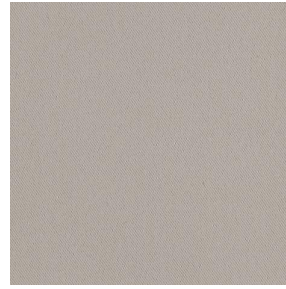
BOREAL Gris 97



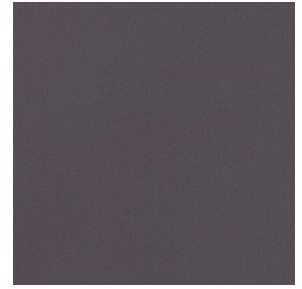
BOREAL Blanc 01



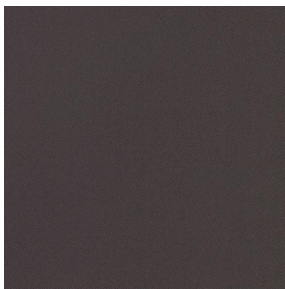
BOREAL Crème 02



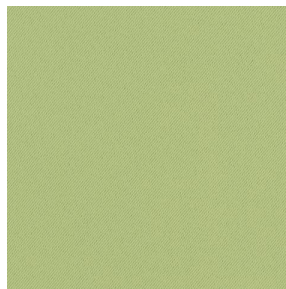
BOREAL Mastic 48



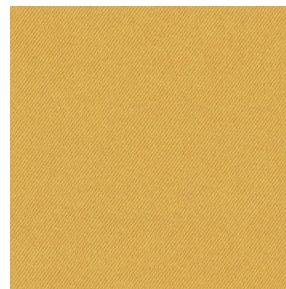
BOREAL Taupe 95



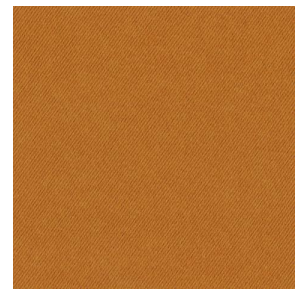
BOREAL Chocolat 70



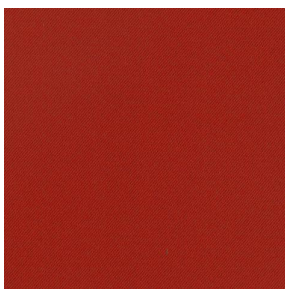
BOREAL Mousse 92



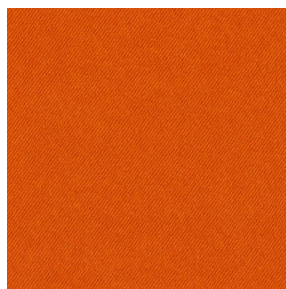
BOREAL Moutarde 47



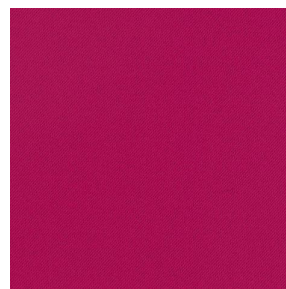
BOREAL Cuivre 50



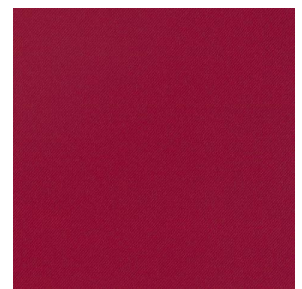
BOREAL Terracotta 65



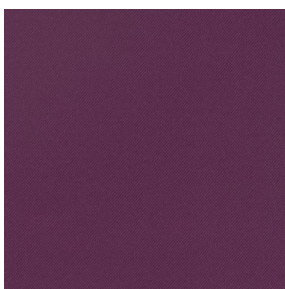
BOREAL Orange 15



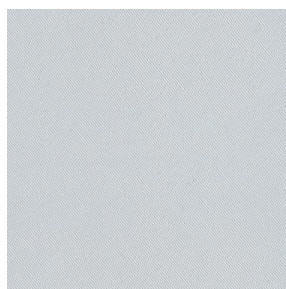
BOREAL Fuchsia 33



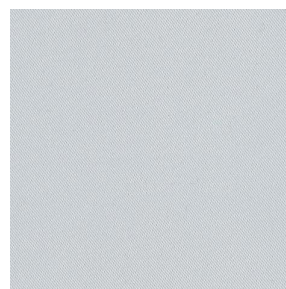
BOREAL Bordeaux 04



BOREAL Prune 84



BOREAL BPI 00



BOREAL BPI 00



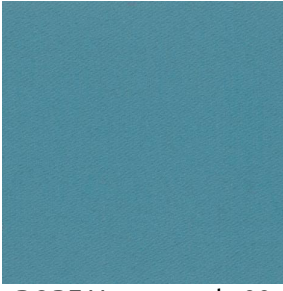
BOREAL cactus 36

drapilux
By Sotexpro

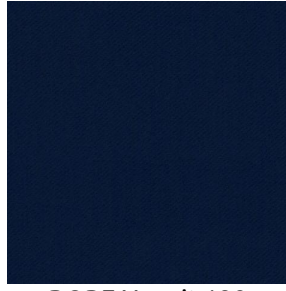
DRAPILUX GmbH - Hofenstraße 3, 77694 Kehl - Deutschland

Non-contractual photos and colors - Indicative fitting - Fitting may vary depending on support selected

BOREAL



BOREAL emeraude 88



BOREAL nuit 128



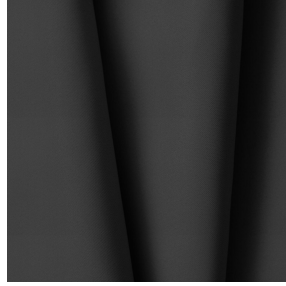
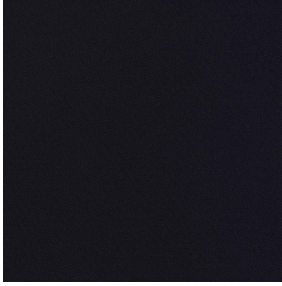
BOREAL Titanium 98



BOREAL Faience 149



BOREAL Indigo 144



BOREAL Noir 10

Dieser einfarbige Stoff ist in einer Reihe mehrerer Farben erhältlich, die sich für jegliche Stils und Launen eignen.

Technische Eigenschaften



Feuerfestigkeit



Wärmeschutz



Akustik

Applications **Faltgardinen - Valence-Vorhänge - Innenfutter - Bettläufer - Vorhänge**

Zusammensetzung **100% feuerfester Polyester**

Gewicht **260 g/m²** Breite **290 cm**

Stoffrichtung **Rückwärts- oder Standardrichtung** Eignung **↔ cm ↑ cm**

Pflegehinweis

Certifications **OEKO-TEX STANDARD 100 (CQ 1006/1)**

Mindestbestellmenge **1**



Technische Eigenschaften

| | |
|-----------------|--|
| Feuerfestigkeit | M1 / B1 / IMO PASS / UNI 8456 / 9174 Classe Uno |
| Akustik | Schalldämpfungskoeffizient (NRC) : 0.88 |
| | Gewichteter Schallabsorptionskoeffizient (a _w) : 0.90 |
| | Akustische Absorptionsklasse (a _w) : A |
| Optischer Index | Lichtreflexion : 3 % |
| | Lichtabsorption : 97 % |
| | Lichtdurchlässigkeit : 0 % |
| Thermaler Index | Sonnenreflexion : 27 % |
| | Sonnenabsorption : 73 % |
| | Sonnendurchlässigkeit : 0 % |
| | UV-Durchlässigkeit : 0 % |
| | G _{tot} : Gt 48 % Fc 81 % |
| | |
| Beständigkeit | Lichteinheit (Einheiten Klasse/8) 4 |
| | Formstabilität (%) |
| | Verzerrung 0 |
| | Querfäden 0 |
| | Bruchdehnung |
| | Verzerrung 17 |
| | Querfäden 27 |
| | Bruchlast (daN) |
| | Verzerrung 87 |
| | Querfäden 110 |



DRAPILUX GmbH - Hofenstraße 3, 77694 Kehl - Deutschland

Non-contractual photos and colors - Indicative fitting - Fitting may vary depending on support selected