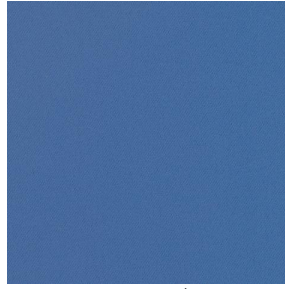


BOREAL



BOREAL Turquoise 53



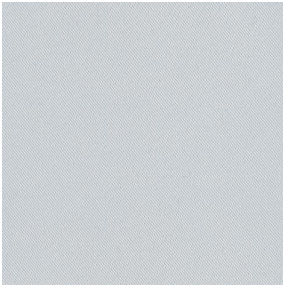
BOREAL Océan 91



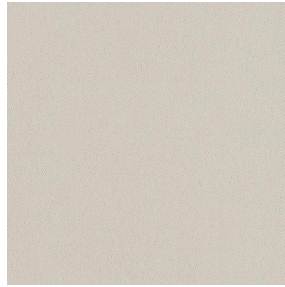
BOREAL Acier 18



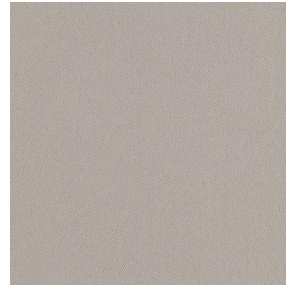
BOREAL Gris 97



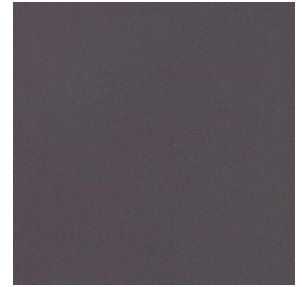
BOREAL Blanc 01



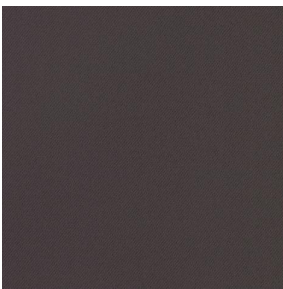
BOREAL Crème 02



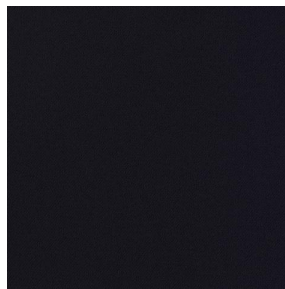
BOREAL Mastic 48



BOREAL Taupe 95



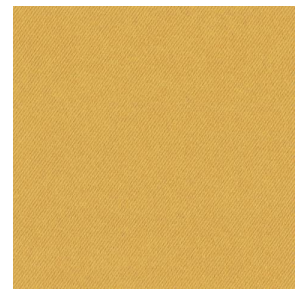
BOREAL Chocolat 70



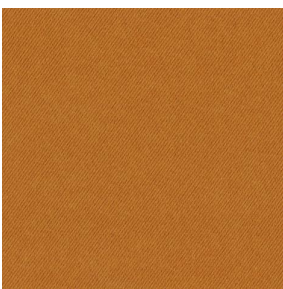
BOREAL Noir 10



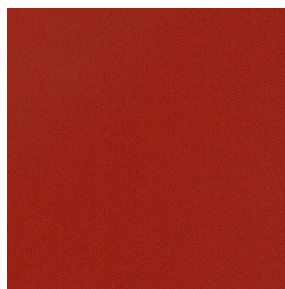
BOREAL Mousse 92



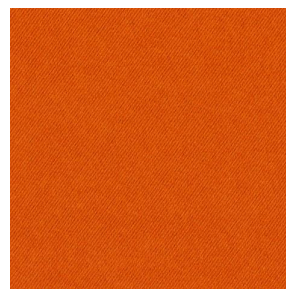
BOREAL Moutarde 47



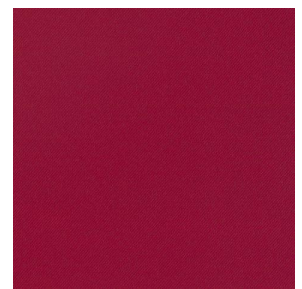
BOREAL Cuivre 50



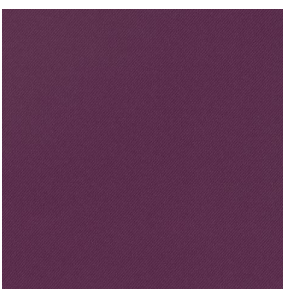
BOREAL Terracotta 65



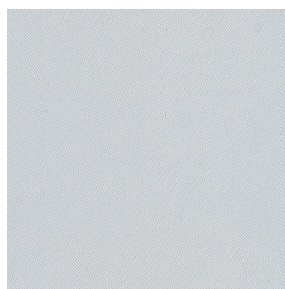
BOREAL Orange 15



BOREAL Bordeaux 04



BOREAL Prune 84



BOREAL BPI 00



BOREAL BPI 00



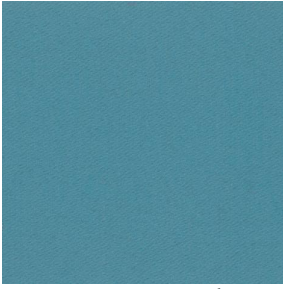
BOREAL cactus 36

drapilux
By Sotexpro

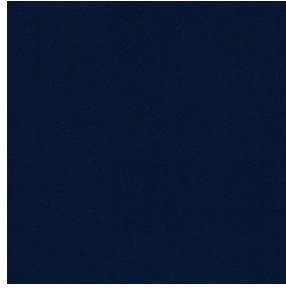
DRAPILUX GmbH - Hofenstraße 3, 77694 Kehl - Deutschland

Non-contractual photos and colors - Indicative fitting - Fitting may vary depending on support selected

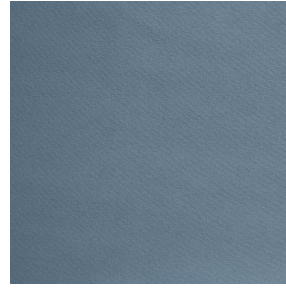
BOREAL



BOREAL emeraude 88



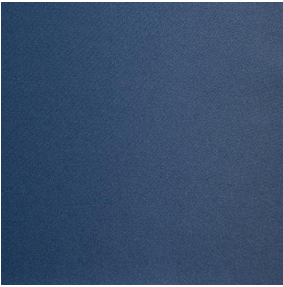
BOREAL nuit 128



BOREAL Titanium 98



BOREAL Faience 149

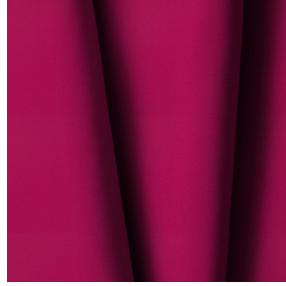
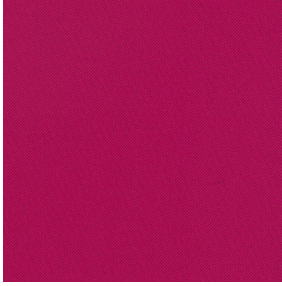


BOREAL Indigo 144

drapilux
By Sotexpro

DRAPILUX GmbH - Hafenstraße 3, 77694 Kehl - Deutschland

Non-contractual photos and colors - Indicative fitting - Fitting may vary depending on support selected



BOREAL Fuchsia 33

Dieser einfarbige Stoff ist in einer Reihe mehrerer Farben erhältlich, die sich für jegliche Stils und Launen eignen.

Technische Eigenschaften



Feuerfestigkeit



Wärmeschutz



Akustik

Applications Falzgardinen - Valence-Vorhänge - Innenfutter - Bettläufer - Vorhänge

Zusammensetzung 100% feuerfester Polyester

Gewicht 260 g/m² Breite 290 cm

Stoffrichtung Rückwärts- oder Standardrichtung Eignung ↔ cm ↑ cm

Pflegehinweis

Certifications OEKO-TEX STANDARD 100 (CQ 1006/1)

Mindestbestellmenge 1



Technische Eigenschaften

Feuerfestigkeit	M1 / B1 / IMO PASS / UNI 8456 / 9174 Classe Uno
Akustik	Schalldämpfungskoeffizient (NRC) : 0.88
	Gewichteter Schallabsorptionskoeffizient (a _w) : 0.90
	Akustische Absorptionsklasse (a _w) : A
Optischer Index	Lichtreflexion : 55 %
	Lichtabsorption : 45 %
	Lichtdurchlässigkeit : 0 %
Thermaler Index	Sonnenreflexion : 53 %
	Sonnenabsorption : 47 %
	Sonnendurchlässigkeit : 0 %
	UV-Durchlässigkeit : 0 %
	G _{tot} : Gt 40 % Fc 67 %
Beständigkeit	Lichtehtheit (Einheiten Klasse/8) 6
	Formstabilität (%)
	Verzerrung 0
	Querfäden 0
	Bruchdehnung
	Verzerrung 17
	Querfäden 27
	Bruchlast (daN)
	Verzerrung 87
Querfäden 110	

drapilux
By Sotexpro

DRAPILUX GmbH - Hofenstraße 3, 77694 Kehl - Deutschland

Non-contractual photos and colors - Indicative fitting - Fitting may vary depending on support selected